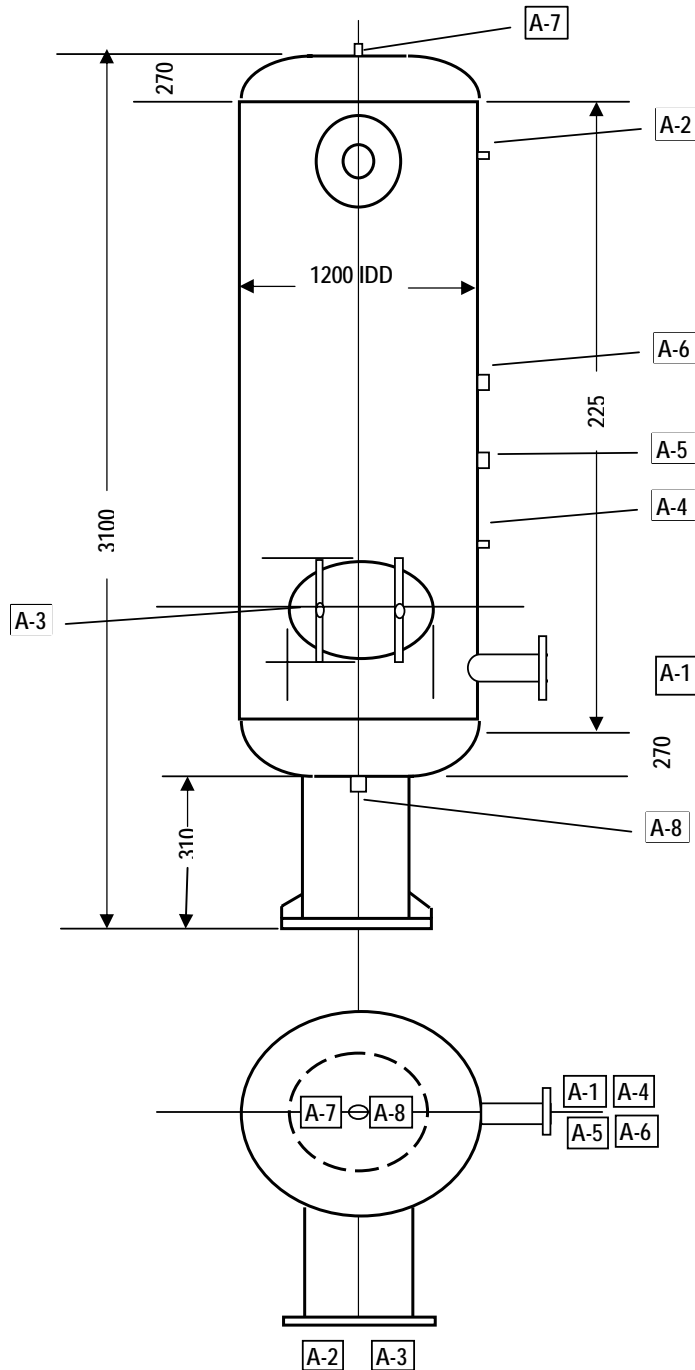


# DRAWING AND SPECIFICATIONS

## AIR RECEIVER - VERTICAL



SPECIFICATIONS	
Capacity	
Max. Working Pressure	
Designed Pressure	
Hydraulic Test pressure	
Design temperature	
Design as per	
Joint Efficiency	
MATERIAL OF CONSTRUCTION	
Shell	
Dished End	
Nozzles	
Flanges	
NOZZLE SCHEDULE	
A-1 Air Inlet	
A-2 Air Outlet	
A-3 Man Hole	
A-4 Unloader Connection	
A-5 Pr. Gauge Connection	
A-6 Safety Valve Connection	
A-7 Vent with Plug	
A-8 Drain with Valve	

Indet No. 43114131 Dt. 03.02.2011 for Air Receiver -Vertical

Drg. No. 96/A4/AR

Sr.DME/Kota

2 M3
7.5 Kg/cm <sup>2</sup>
8.25 Kg/cm <sup>2</sup>
12.3 Kg/cm <sup>2</sup>
40°C
IS:2825
0.7
N
6 mm IS: 2062
6 mm IS: 2062
HG ERW IS: 1239
BS 10 Table 'F'
5" NB
5" NB
450 OD
15 BSP
10 BSP
20 BSP
15 BSP
15 BSP