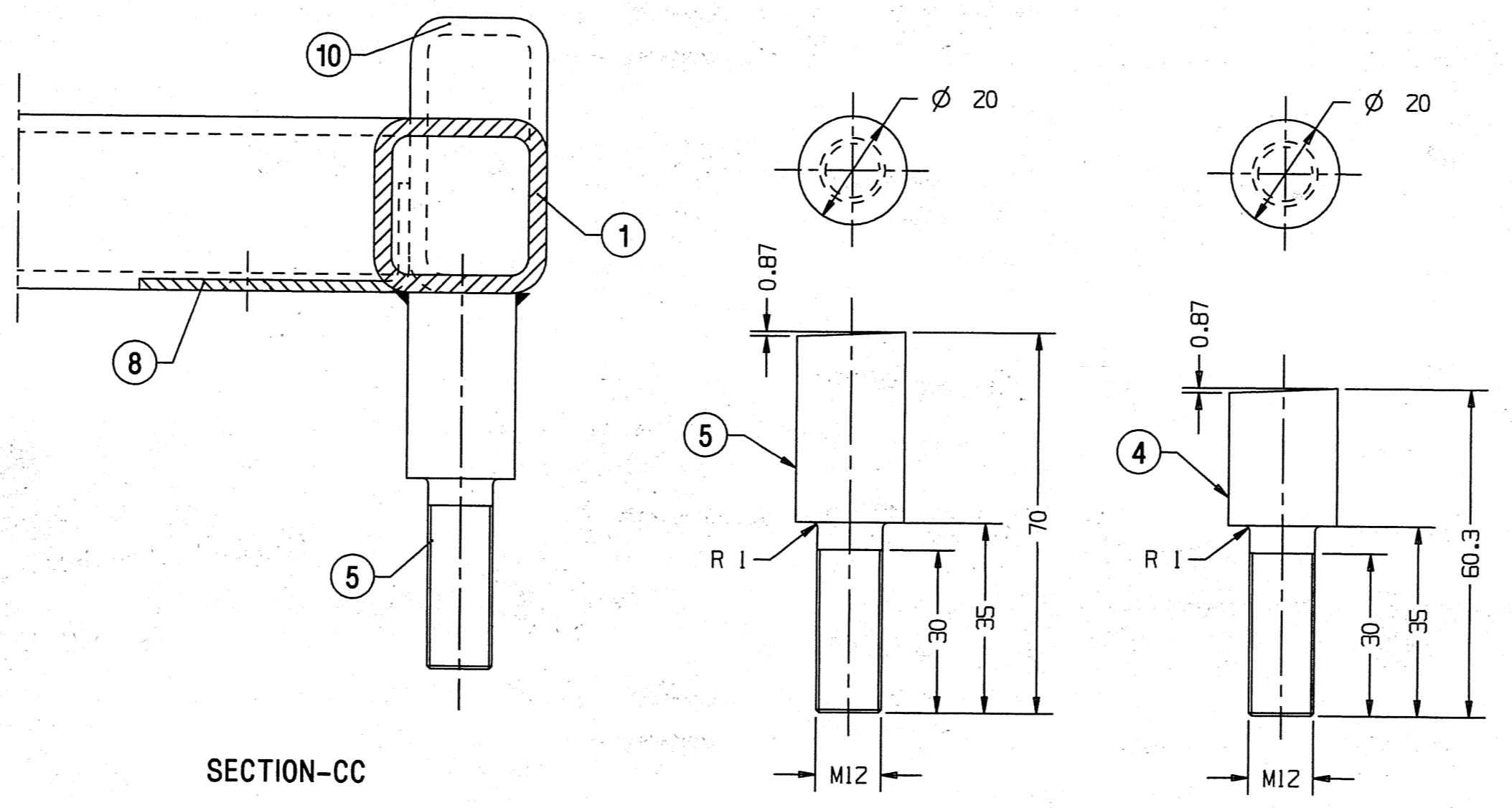
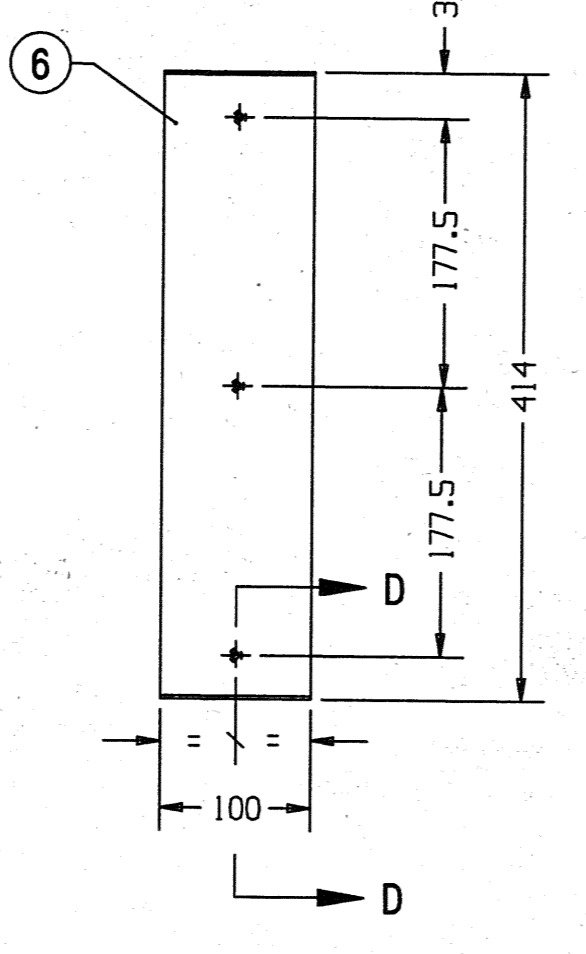
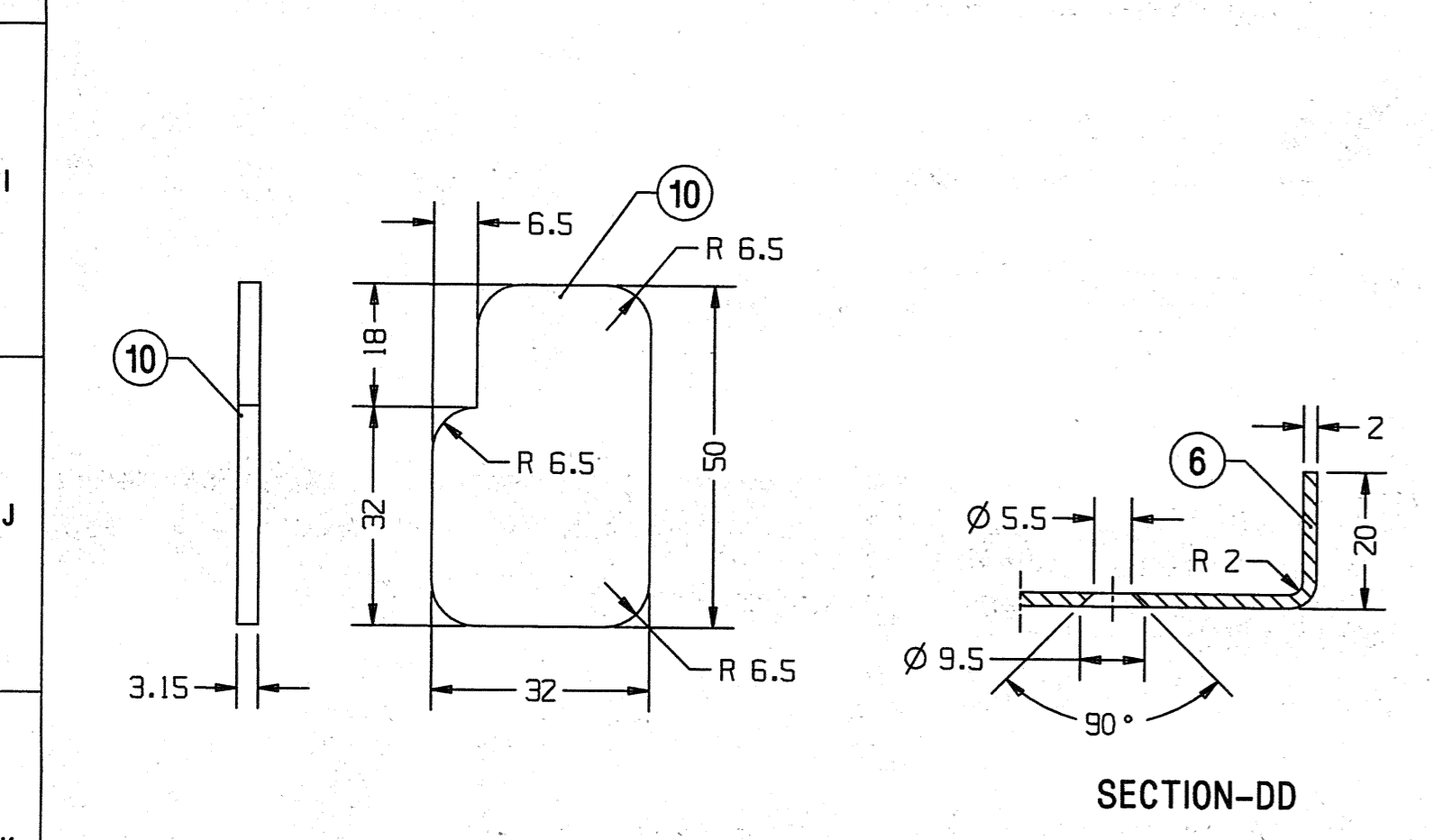
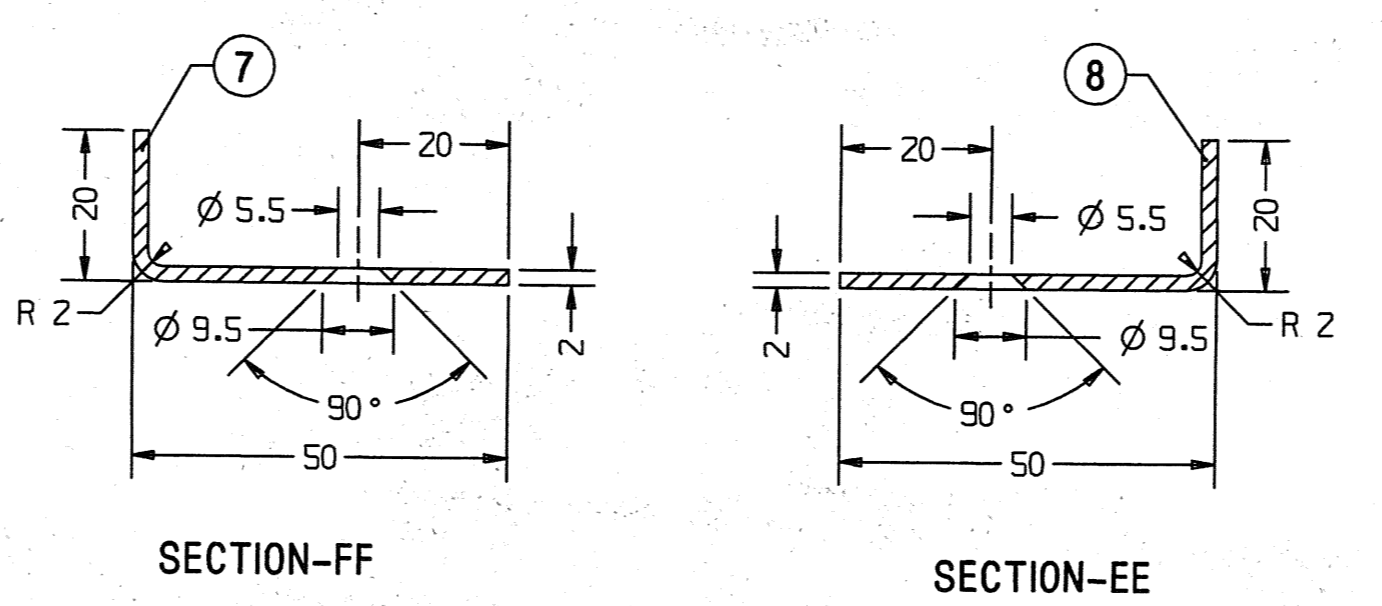
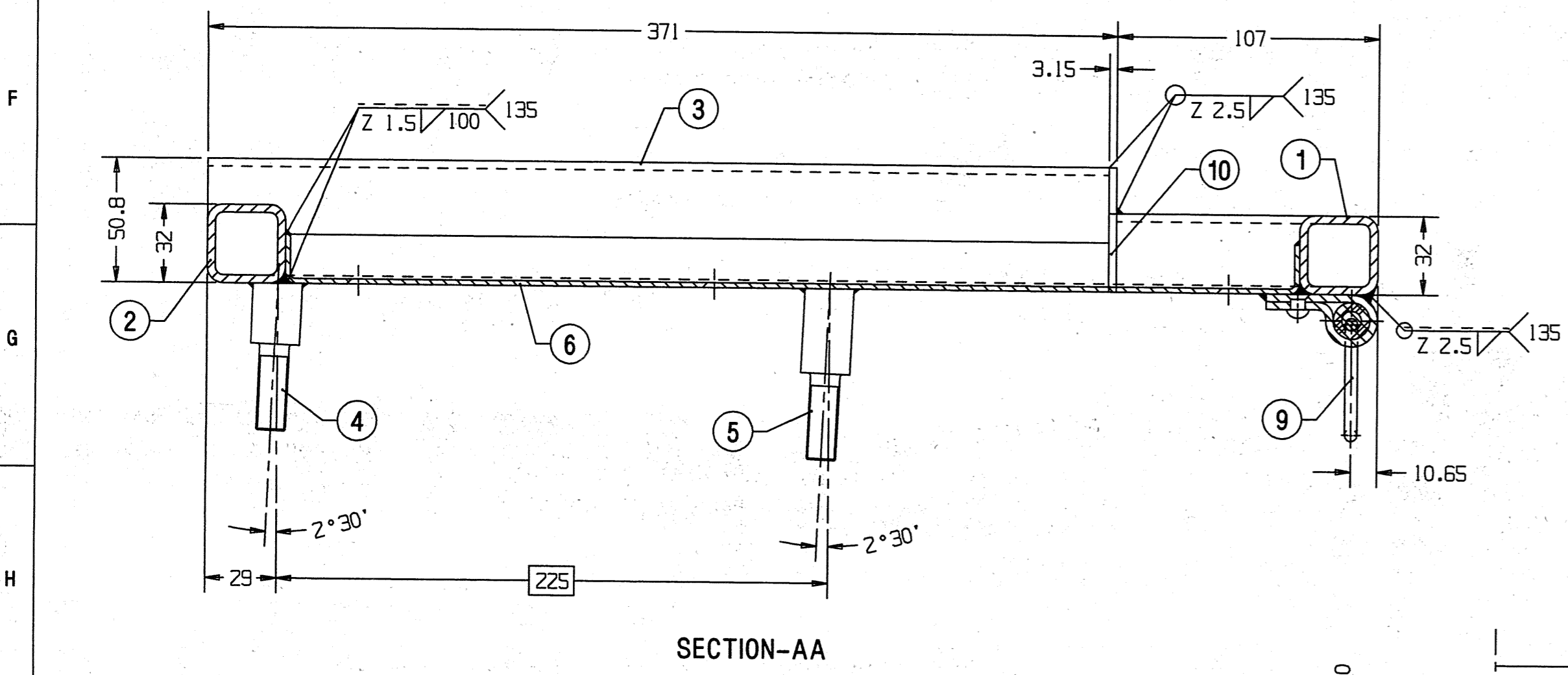
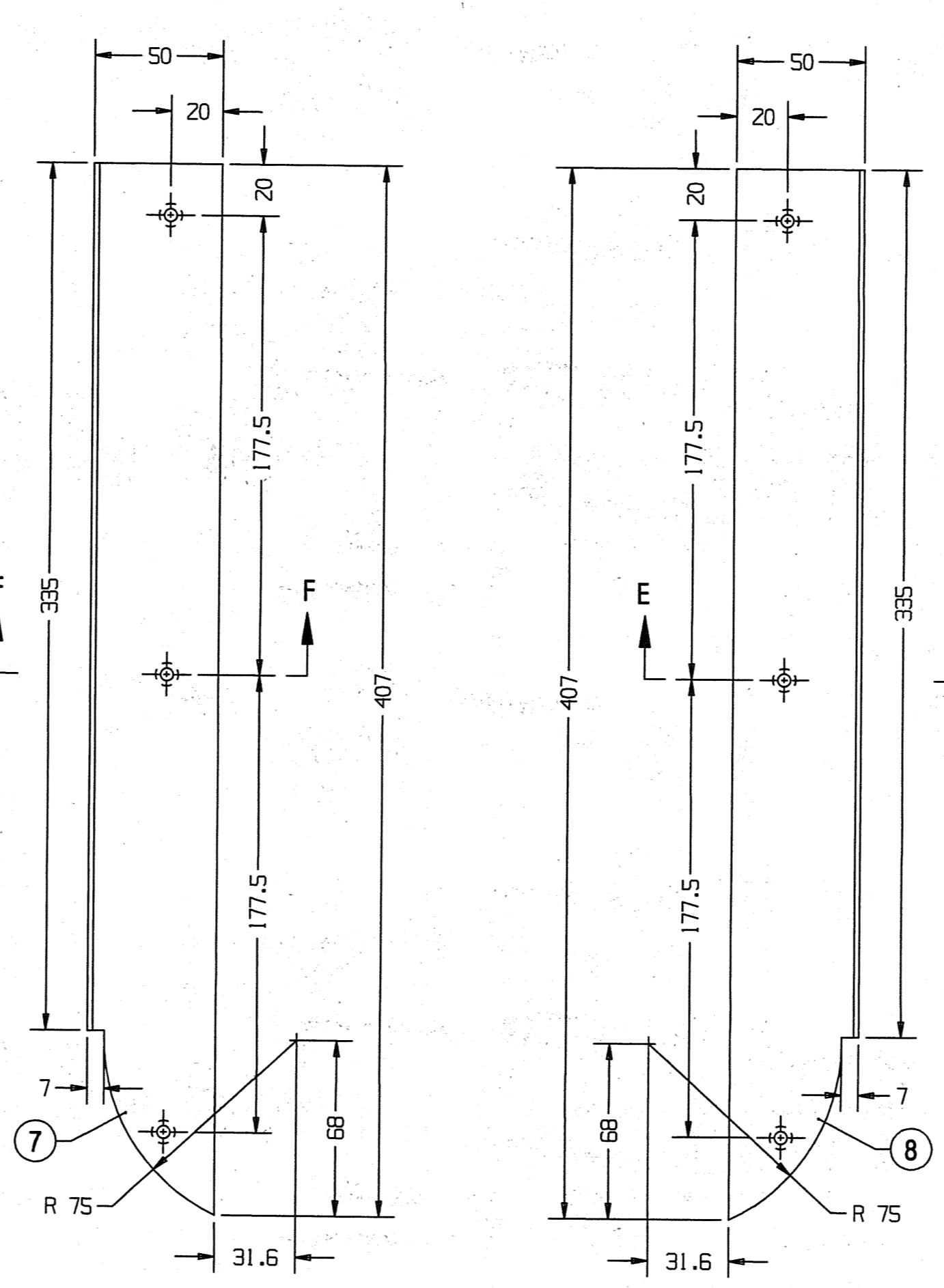
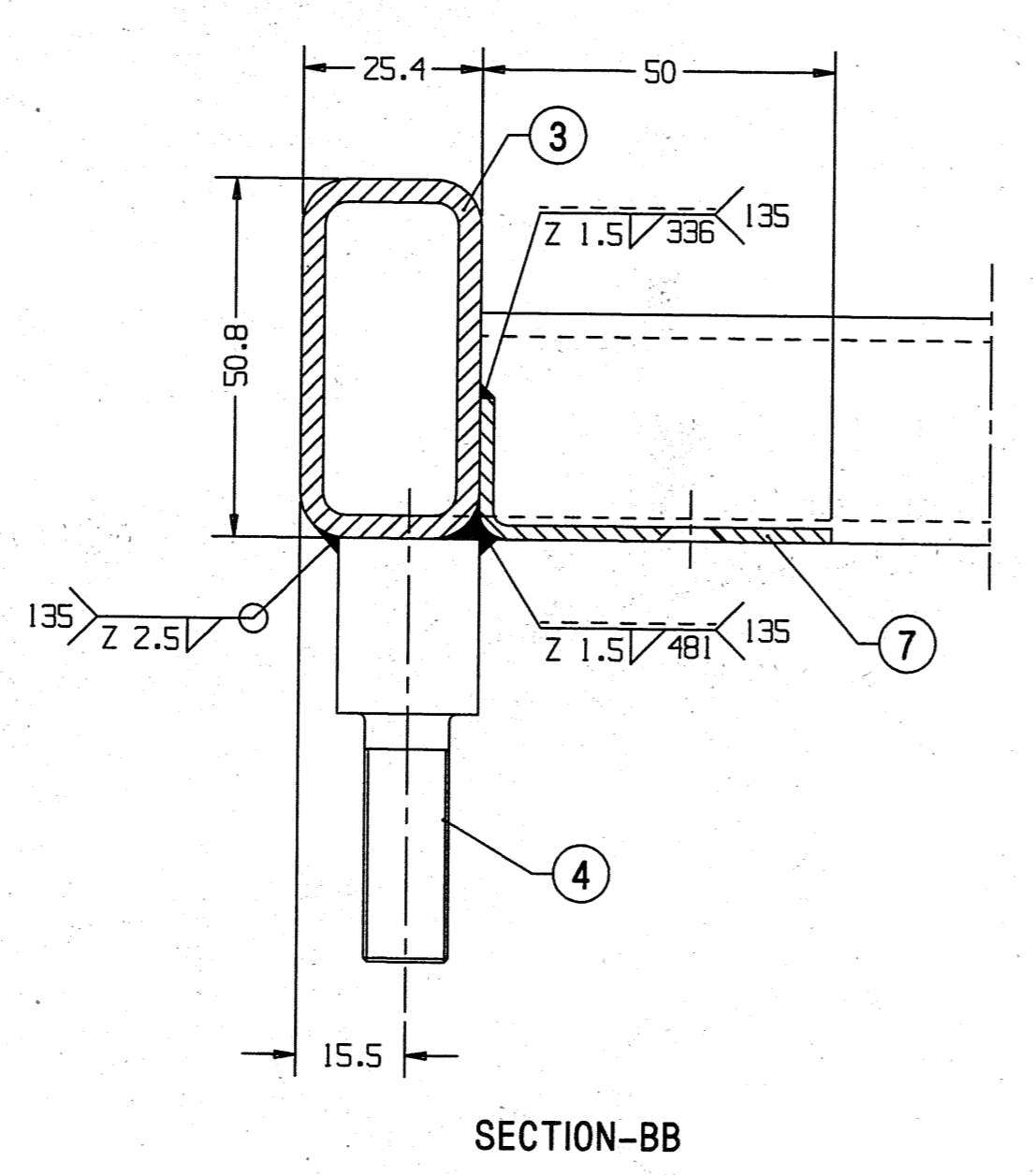
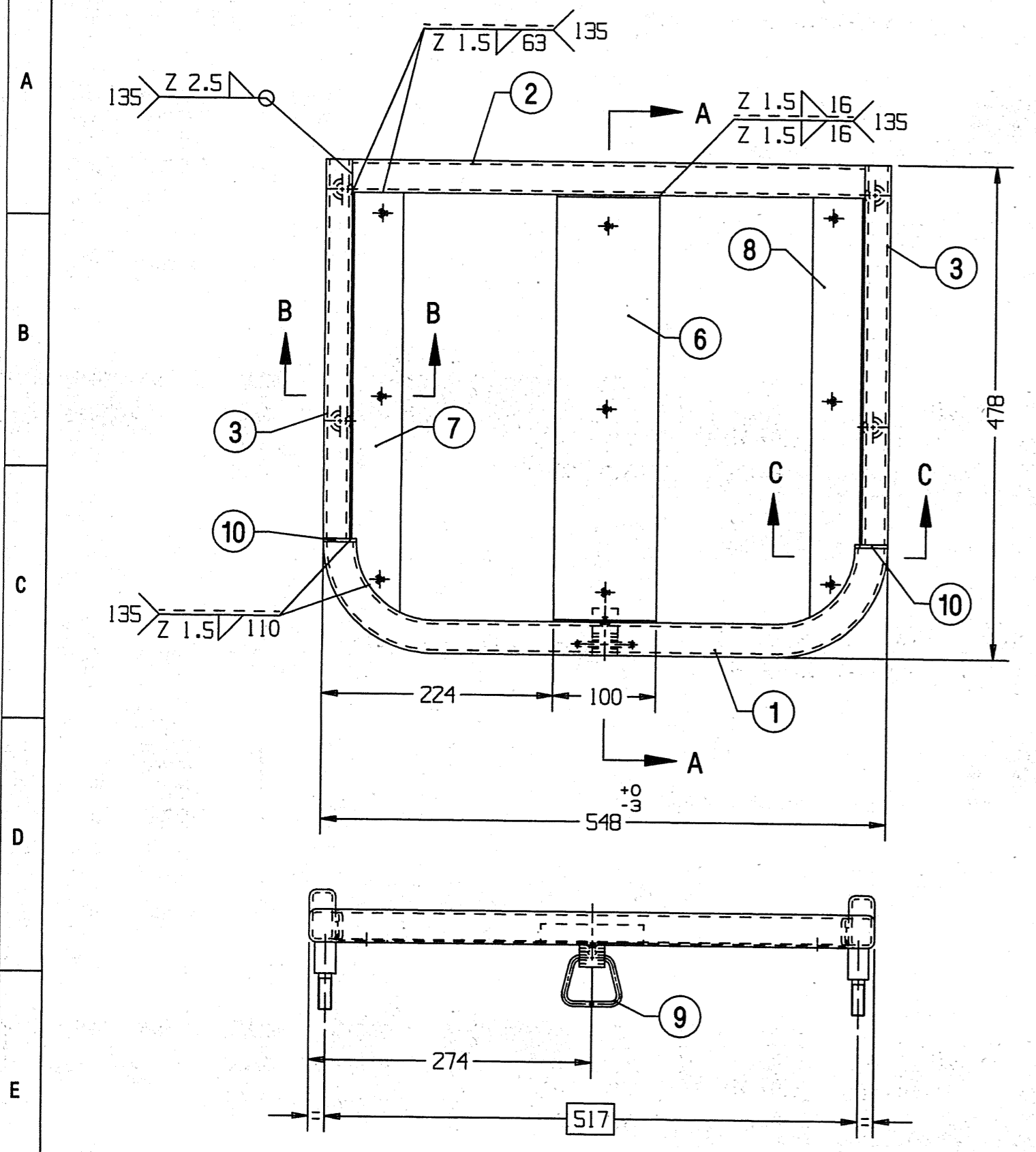


ALT. NO	ALT. DATE	ZONE	ALTERATIONS	AUTHORITY
NIL	NIL	NIL	NIL	NIL



NOTE:-
 1. FRAME ASSEMBLY TO BE PAINTED WITH ONE COAT OF RED OXIDE ZINC CHROMATE TO IS: 2074-79.
 * 2. IS: 4923-85, CF SHS, YSt 240.
 3. ALL WELDS SHOULD BE GROUND.
 4. ALL SHARP CORNERS SHOULD BE ROUNDED OFF.
 5. DIMENSIONS MARKED \square THUS ARE TO BE MAINTAINED BY USE OF JIG.
 6. \sphericalangle ALL OVER FOR ITEM-4 & 5.

27 DEC 1990

ITEM	DESCRIPTION & DIMENSIONS	QTY	ASSEMBLY	DETAIL DRG	MATL. & SPEC.	REMARKS
10	CLOSING PIECE 3.15X32X50	2	NIL	IS: 5986-92 Fe-330	NIL	
9	RING BELOW SEAT	1	SE61325	NIL	NIL	
8	ANGLE STIFFENER (R.H.) 2X66.7X407	1	NIL	IS: 5986-92 Fe-330	NIL	
7	ANGLE STIFFENER (L.H.) 2X66.7X407	1	NIL	IS: 5986-92 Fe-330	NIL	
6	CHANNEL STIFFENER 2X100X447	1	NIL	IS: 5986-92 Fe-330	NIL	
5	STUD ϕ 20X70	2	NIL	IS: 2062-92 Fe 410W B	NIL	
4	STUD ϕ 20X60.3	2	NIL	IS: 2062-92 Fe 410W B	NIL	
3	RECTANGULAR TUBE 50.8X25.4X3.25X368	2	NIL	*	NIL	
2	SQUARE TUBE 32X32X3.25X497	1	NIL	*	NIL	
1	SQUARE TUBE 32X32X3.25X620	1	NIL	*	NIL	

WELD LENGTH	ITEM	DESCRIPTION & DIMENSIONS	QTY	ASSEMBLY	DETAIL DRG	MATL. & SPEC.	REMARKS
3.58600	M	GROUP SEAT & UPPER BERTHS		SUPERSEDES:	NIL		
6.50000	KG	FILE /users2/furnish/stbrth/ae61452.prt					
FRAME							SCALE: 1:1
FOR SINGLE SEAT COMPLETE							SSE/REC: 400/12/98
RAIL COACH FACTORY, KAPURTHALA							DRN: DHRM
INDIAN RAILWAYS STANDARD							REF.DWG. NIL
PL NO. 01130103							
DRG. NO. AE61452							
SHEET 1/1							

THIS IS A COMPUTER GENERATED DRAWING. ANY MANUAL ALTERATION SHALL AUTOMATICALLY RENDER IT INVALID FOR UNTOLERANCED DIMENSIONS REFER MDG0008

REVIEW NO. /PROTOTYPE/ FINAL DATE OF FIRST ISSUE 08/12/98