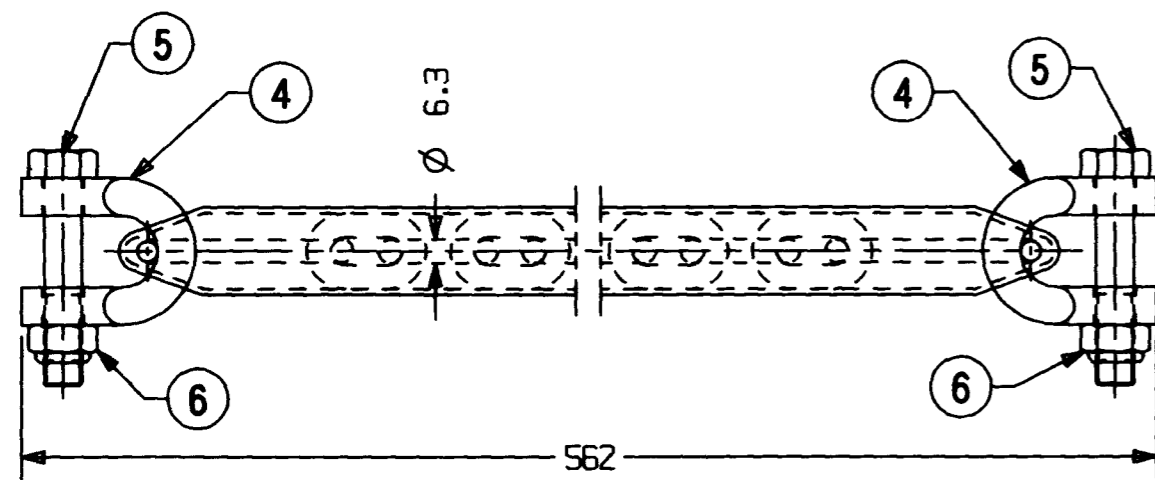
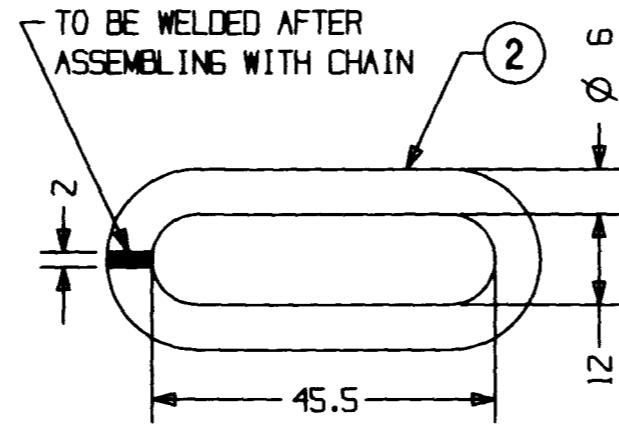
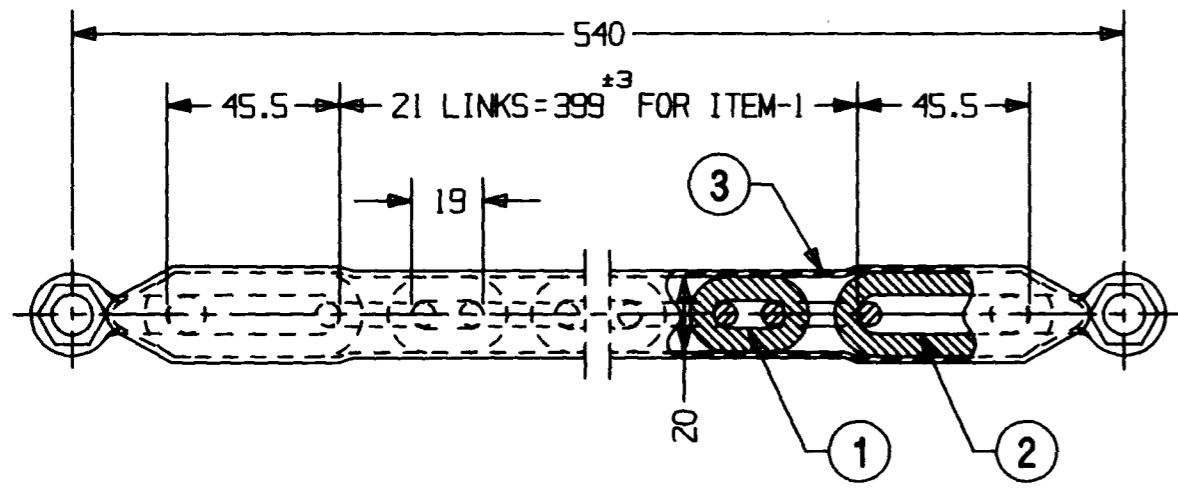


9	10	11	12	13
ALT.NO	ALT.DATE	ZONE	ALTERATIONS	AUTHORITY
NIL	NIL	NIL	NIL	NIL



मिcroFILMED

**NOTE:-**

1. COMPONENT SHALL BE CHROME PLATED TO IS: 1068-93, TAB-1A, SERVICE CONDITION NO. 2 Fe/Ni 20P Cr.
2. ADHESION OF COATING SHALL BE TESTED BY EITHER FILE TEST OR QUENCHING METHODS AS SPECIFIED IN ANNEXURES H & J OF IS: 1068-93.
3. COATED ARTICLE SHALL BE SUBJECTED TO CORROSION TEST GIVEN IN TAB-6 OF IS: 1068-93.
4. THIS COMPONENT IS TO BE USED INSIDE THE COACH. THERE SHOULD BE NO PITTING/CORROSION ON THE SURFACE. ALL WELDS SHOULD BE GROUND AND SHARP CORNERS ROUNDED. IT SHOULD HAVE ELEGANT FINISH.
- \* 5. COLOUR OF ITEM-3 TO BE 'BLUE 315' AND STAMPED WITH 'INDIAN RLYS' CREST TO RDSO/SK-68068, ALT.-2.

6	PREVAILLING TORQUE TYPE NUT M10	2	IS: 7002-91 -8	NIL	MDTS 057
5	HEXAGON HEAD BOLT ISO 4016-M10X55-5	2	IS: 1363 (PT.1)-92	NIL	MDTS 057
4	SHACKLE	2	IRS.C/CF-79	NIL	#
3	REXINE 1.5X120X530	1	NIL	RDSO/SPEC. C-9503, TYPE-II	*
2	END LINK $\phi$ 6X123.5	2	NIL	IS: 2062-92 Fe 410W A	#
1	CHAIN SIZE $\phi$ 6.3-19PX399	1	NIL	IS: 2429 (PT.2)-70	#

WELD LENGTH	ITEM	DESCRIPTION & DIMENSIONS	OPASSLY	DETAIL DRG	MATL. & SPEC.	REMARKS				
NIL	M	GROUP SEAT & UPPER BERTHS	SUPERSEDES: NIL							
WEIGHT	FILE	/users2/furnish/stbrth/cc61295.prt								
1.15000	KG	<b>CHAIN ASSEMBLY</b>				SCALE	SSE/REC	1:2	1:1	1:6.79
	S.AREA						CHD	1:1	1:1	
NIL	M <sup>2</sup>	<b>(FOR CONDUCTOR'S BERTH)</b>				DRN	DHRM	LOBIN	19/5/99	19/5/99
NIL	M					<b>RAIL COACH FACTORY, KAPURTHALA</b>				REF.DWG.No.
NIL	M	<b>INDIAN RAILWAYS STANDARD</b>								PL NO.
NIL	M					<b>INDIAN RAILWAYS STANDARD</b>				DRG. NO.
NIL	M	<b>INDIAN RAILWAYS STANDARD</b>								ALT.

THIS IS A COMPUTER GENERATED DRAWING. ANY MANUAL ALTERATION SHALL AUTOMATICALLY RENDER IT INVALID.

FOR UNTOLERANCED DIMENSIONS REFER MDG0008 REVIEW NO. /PROTOTYPE/FINAL DATE OF FIRST ISSUE 19/05/99