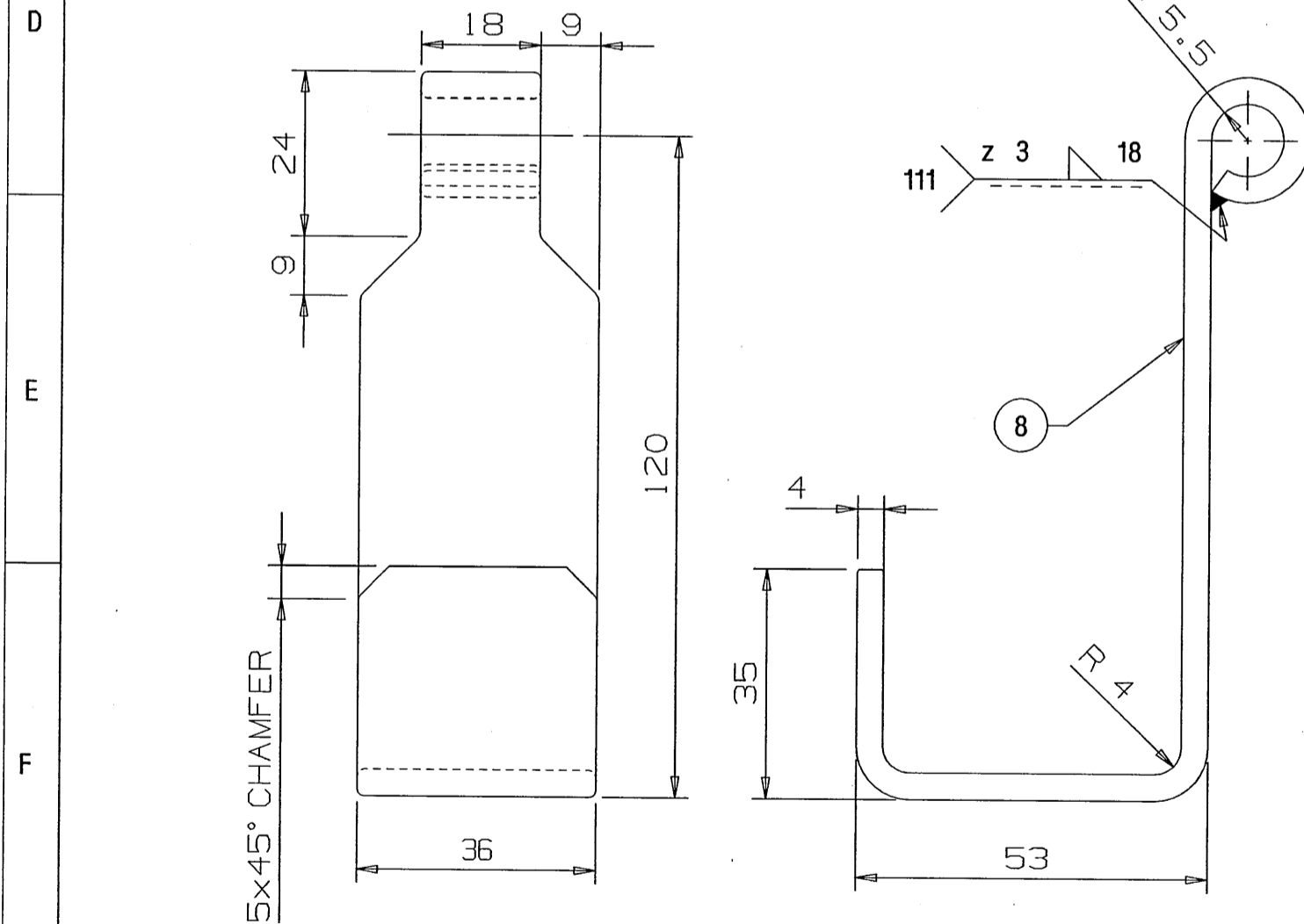
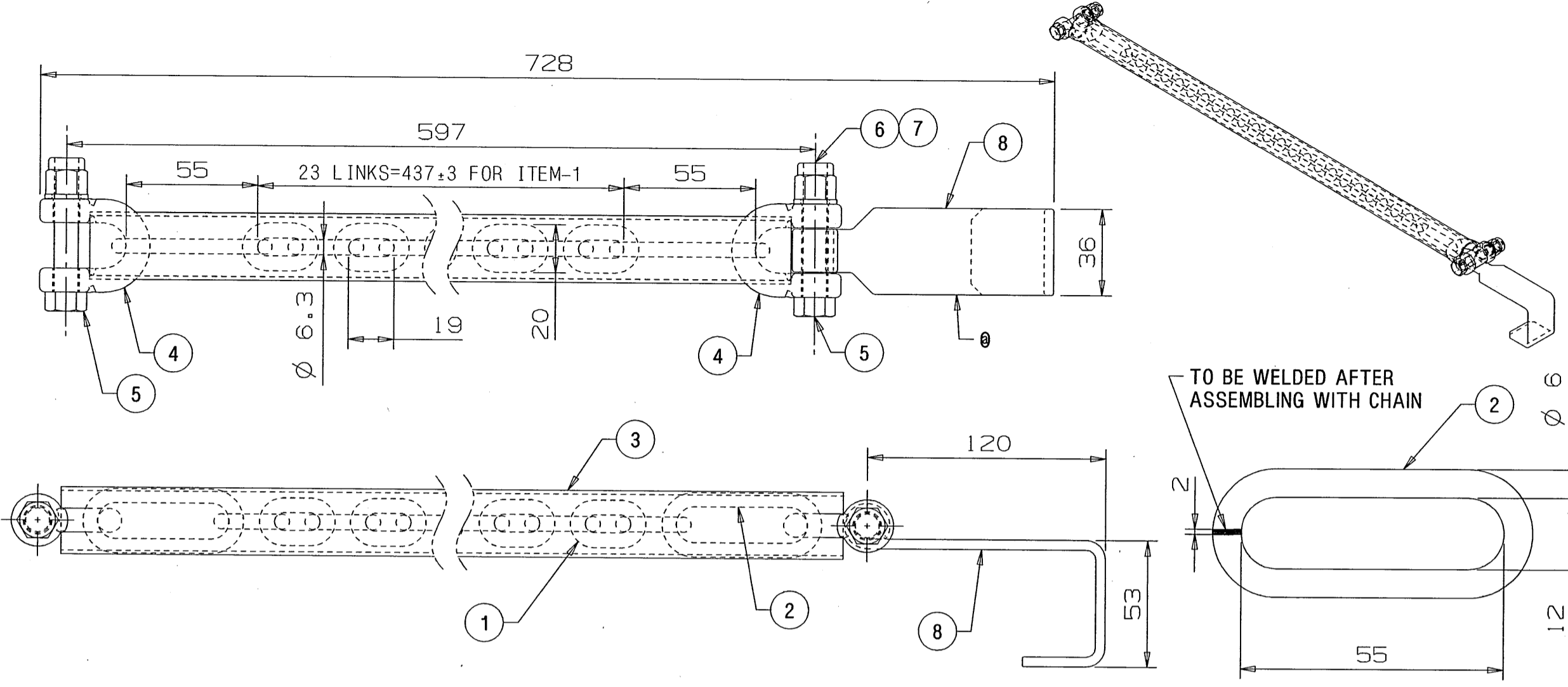


ALT.NO	ALT.DATE	ZONE	ALTERATIONS	AUTHORITY
d	27/07/2007	ALL E9	1. ITEM-5 WAS "HEX HEAD BOLT" TO SPECIFICATION IS:1364 (PT-1)-92, DIMENSION REMAINING SAME. 2. MATERIAL OF ITEM-6 CHANGED TO ST.STEEL.	DIC. NO. MDO70017
e	13/11/2007	ALL ALL ALL	1. DRG. MADE IN 3D & VIEWS UPDATED ACCORDINGLY. 2. NOTE-7 & ISO VIEW ADDED. 3. NOTE-3 MODIFIED & SPEC. OF ITEM-3 REVISED.	DIC NO MDO70050



**NOTE:-**

- # 1. CHAIN, END LINK AND SHACKLE SHOULD BE PAINTED AS PER INTERIOR COLOUR SCHEME OF COACH AFTER APPLYING ONE COAT OF ROZC PRIMER TO IS: 2074-92.
2. MANUFACTURE'S NAME AND DATE OF MANUFACTURE TO BE STAMPED AT THE LOCATION MARKED @ IN LETTER SIZE OF 5 mm.
3. STAINLESS STEEL ELECTRODE OF SAME COMPOSITION AS PER TABLE-3 OF RDSO/SPEC. C-K201 IS TO BE USED FOR WELDING.
4. ITEM-8 SHOULD HAVE STANDARD POLISHED SURFACE FINISH AS PER IS: 6911-92, TAB-8, FINISH NO. 4 AFTER WELDING.
- \* 5. COLOUR OF REXINE (ITEM-3) SHOULD BE AS PER SAMPLE CODE AC-SC03.
6. THE COMPLETE CHAIN IS TO BE COVERED BY THE REXINE AND STITCHED SUITABLY IN THE FINAL ASSEMBLY STAGE.
7. WELDING AREA OF STAINLESS STEEL ITEMS SHOULD BE PICKLED & PASSIVATED BEFORE SURFACE FINISH.

अनुमोदित  
Entered  
by  
Date  
19 Nov 2007

ITEM	DESCRIPTION & DIMENSIONS	QTY	OPASSLY	DETAIL DRG	MATL. & SPEC.	REMARKS
8	LOCKING HOOK 4X36X234	1	NIL		RDSO/SPEC.C-K 201,X4Cr-Ni18 10	GRADE - 304
7	SPRING WASHER B10	2	LIHW09		IS: 3063-1994	ITEM-21 COATING TO MDTS 057
6	STAINLESS STEEL NYLOC NUT M10 (A2-70 TO IS:1367 PT.14)	2	LIHWSS08 -8		IS: 7002-1991 DIN982	ITEM-9
5	HEX SOCKET HD CAP SCREW M10X55	2	NIL		IS: 2269-2006 STAINLESS STEEL	NIL
4	SHACKLE	2	C/CF-79		NIL	#
3	REXINE 120X600	1	NIL		RDSO/2006 CG-16	*
2	END LINK Ø 6X141	2	NIL		IS: 2062-92 Fe 410 WA	#
1	CHAIN SIZE Ø 6.3-19PX437	1	NIL		IS: 2429 (PT-2)-70	#

WELD LENGTH	ITEM	DESCRIPTION & DIMENSIONS	OPASSLY	DETAIL DRG	MATL. & SPEC.	REMARKS	
NIL	M	GROUP SEATS & UPPER BERTHS				SUPERSEDES: AE61480 ALT d	
WEIGHT	FILE	ae61480e.prt (3D)					
1.200	KG	CHAIN ASSEMBLY FOR TRANSVERSE MIDDLE BERTH				SCALE	SSE/REC
NIL	M <sup>2</sup>					1:2	CHD
NIL	M	RAIL COACH FACTORY, KAPURTHALA				REF.DRG.No.	NIL
NIL	M	INDIAN RAILWAYS STANDARD				PL NO.	NIL
NIL	M	DRG.NO. AE61480				ALT.	e
NIL	M	ADE/SME				SIZE	A2
NIL	M	DY.CME				SHEET	1/1

DETAIL DRGS STARTING WITH "LI" ARE INTERNAL REFERENCE LISTS ONLY AND ARE NOT FOR ISSUE  
ANY MANUAL ALTERATION SHALL AUTOMATICALLY RENDER THIS DRAWING INVALID.  
FOR UNTOLERANCED DIMENSIONS REFER MDG0008