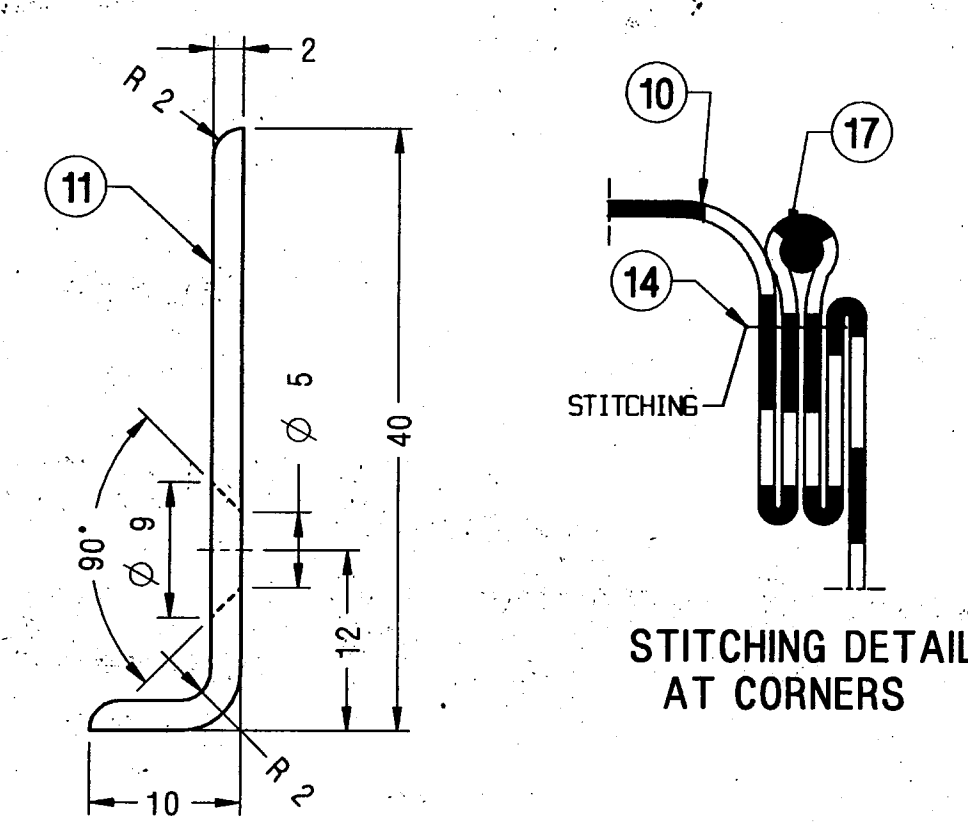
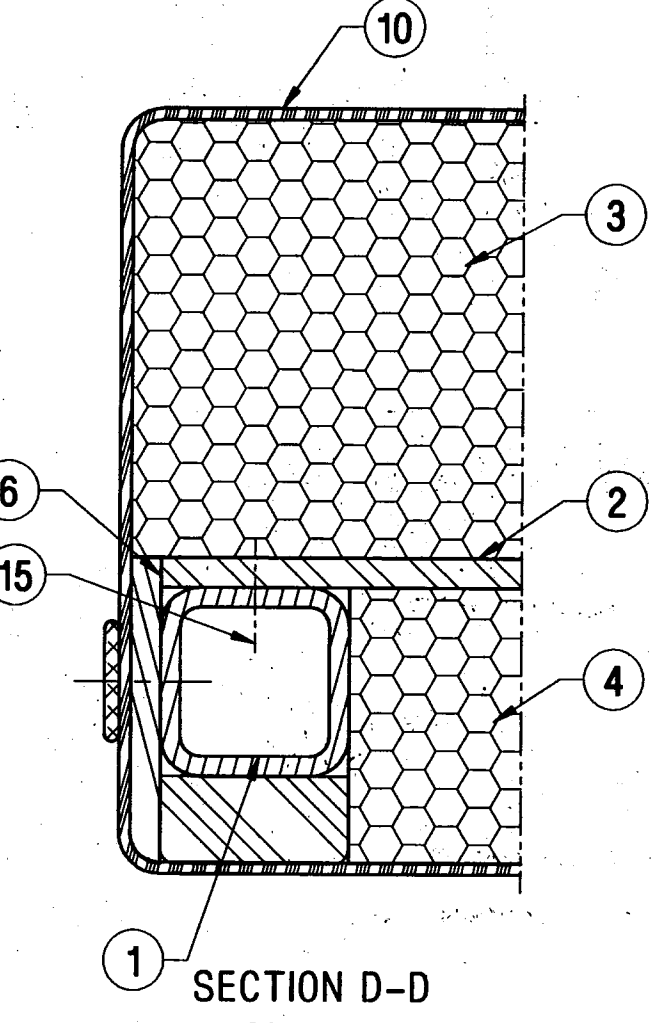
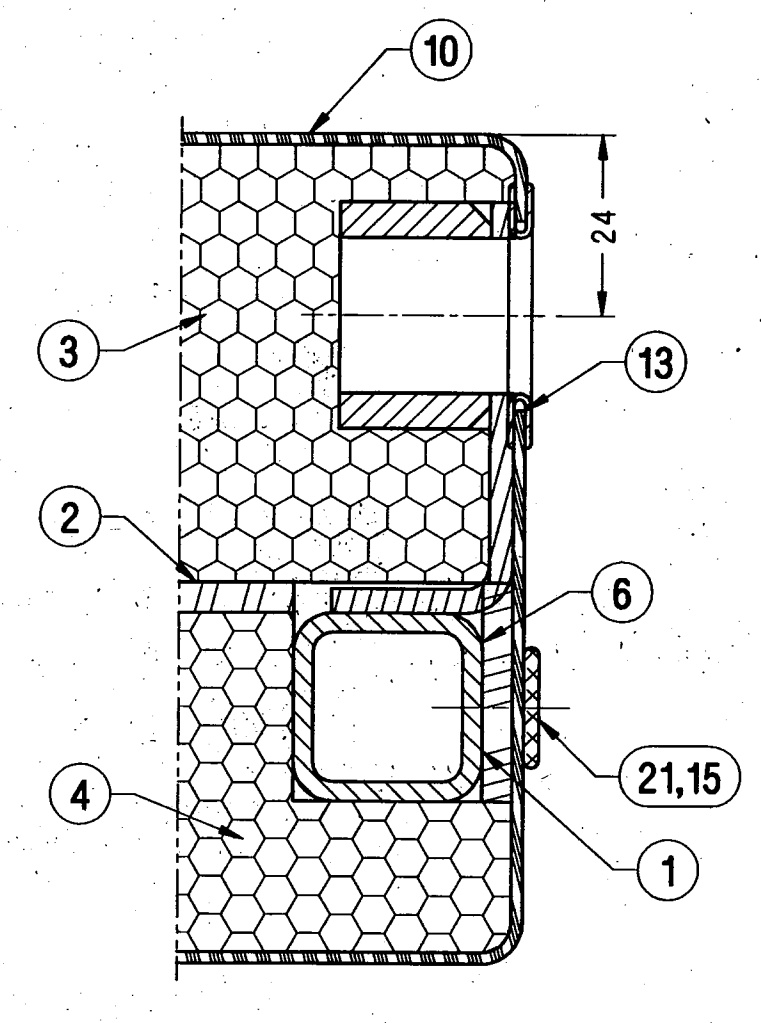
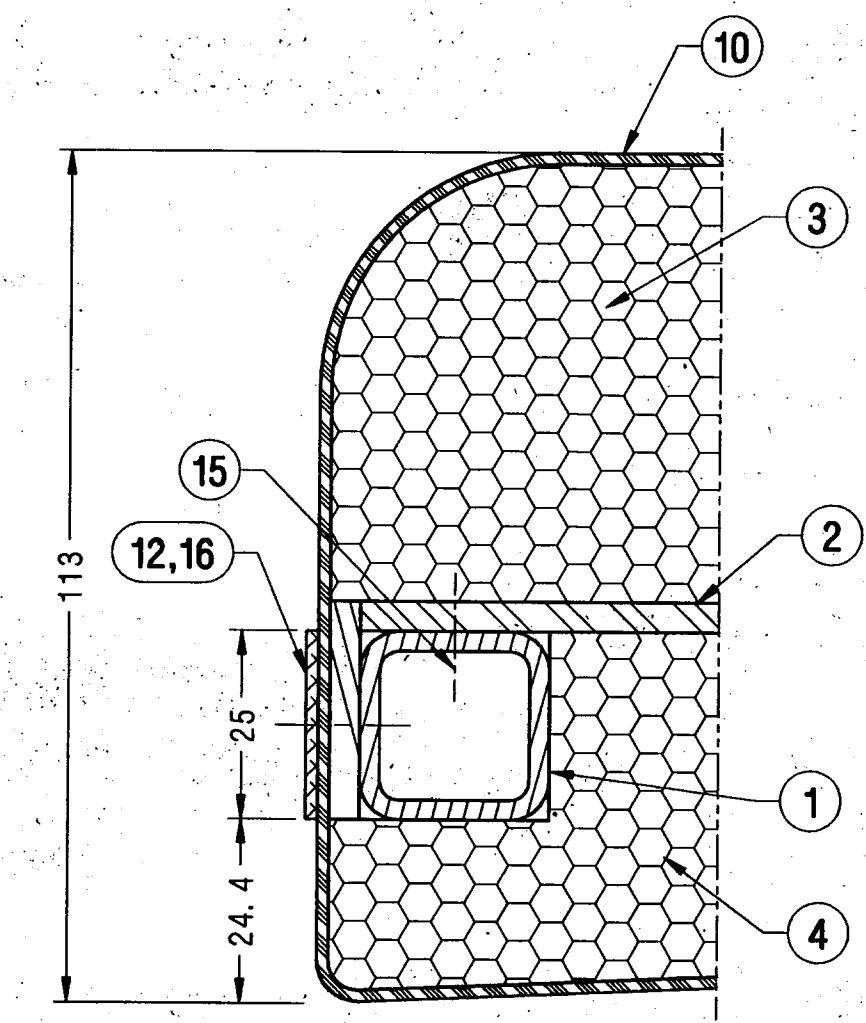
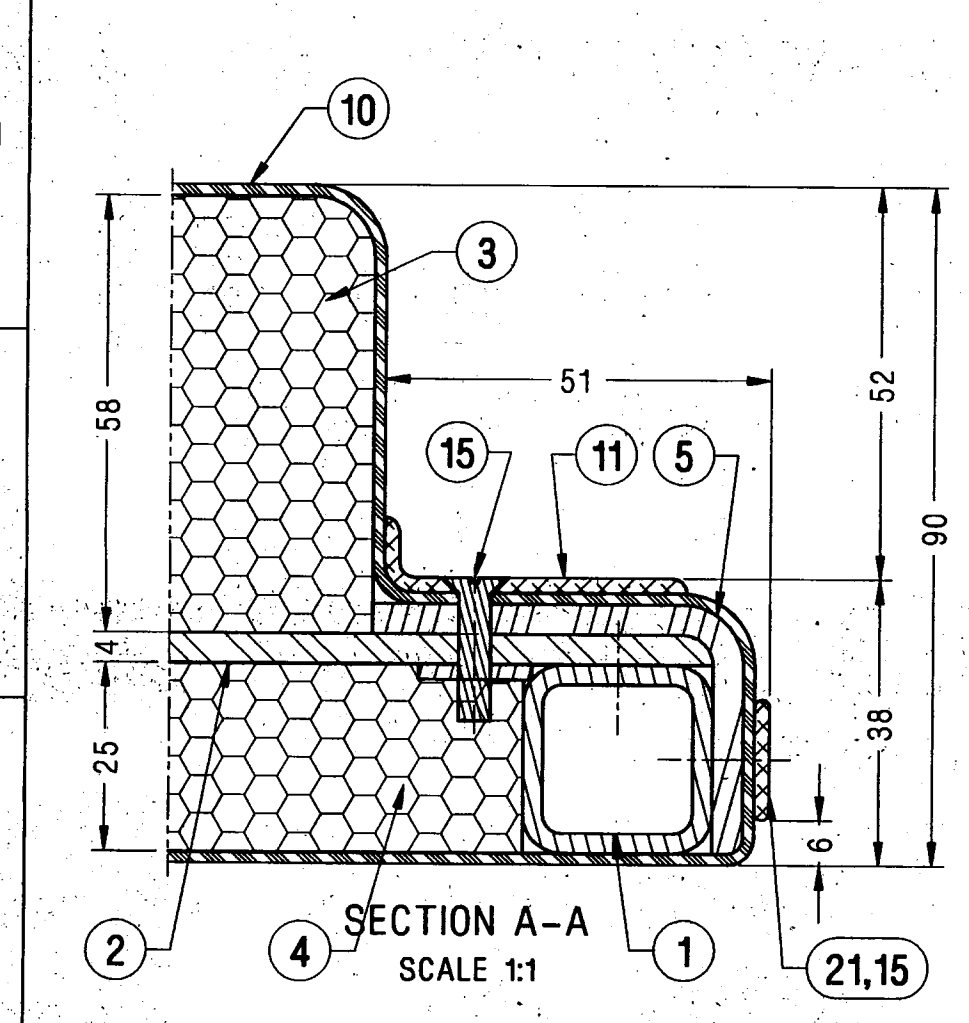
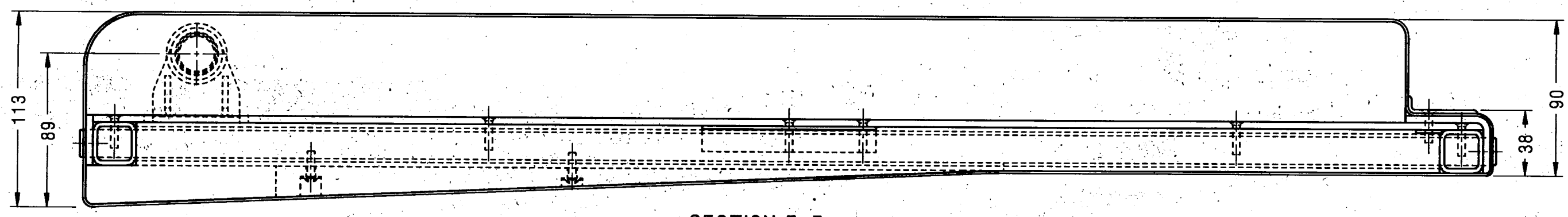


- NOTE :-
1. P. U. FOAM TO BE PASTED TO THE COMPREG WITH APPROVED BRAND OF WATER PROOF GLUE.
  2. NECESSARY CUT-A-WAYS TO BE DONE TO SUIT AT SITE.
  3. PITCH OF TAPPING SCREWS SHOULD NOT BE MORE THAN 200 mm.
  4. FELT TO BE PASTED PROPERLY ON THE FRAME WITH APPROVED BRAND OF ADHESIVE.
  5. SEAT/BERTH SHOULD COMPLY WITH ALL THE REQUIREMENTS MENTIONED IN MDTs-157.
  6. ITEMS-11 SHALL BE DULL ANODISED TO IS: 1868-82, TAB-1 GR. AC 10.
  7. HOLE FOR THE CATCH TO BE DONE TO SUIT AT SITE.



ALT. NO.	ALT. DATE	ZONE	ALTERATIONS	AUTHORITY
c	16/03/2004	J-15 6-15 D-14	1. DESCRIPTION OF ITEM 3 & 4 WERE FOAM RUBBER FOR BERTH SIDE AND FOAM RUBBER FOR BACK REST SIDE. 2. ITEM 18 DELETED. 3. NOTE 1 UPDATED.	DIC NO. MDO40011
d	17/07/2006	ALL ALL ALL ALL	1. DIMENSIONS UPDATED AS PER LATEST ARRGT. 2. ALL NOTES UPDATED. 3. ITEMS-8 & 9 DELETED. 4. SIZE OF THE ITEMS CORRECTED.	DIC NO. MDO60018

Entered  
Date Base  
11 9 JUL 2006

ITEM NO.	DESCRIPTION	QTY	REF. NO.	STANDARD	REMARKS
22	FLAT Moulding	1	CC43334	NIL	NIL
21	FLAT Moulding	2	CC43334	NIL	L=1360
20	TAPPING SCREW ISO 1482 ST 3.5X16-F	2	IS: 7170-09	NIL	NIL
19	CATCH PLATE	1	SE61262	NIL	NIL
18	GADA CLOTH 600X1900	1	NIL	IS: 1094-76 VAR.-3	NIL
17	COTTON THREAD 3X5000	1	NIL	IS: 1720-78	NIL
16	SLTD PAN HD TAPP SCREW ST3.5X16-F	2	L1HW03	IS: 7173-1989 STEEL	ITEM-72 COATING TO MDTs 057
15	SLTD CSK HD TAPP SCREW ST4.2X19-F	37	L1HW03	IS: 7170-1989 STEEL	ITEM-29 COATING TO MDTs 057
14	SEWING THREAD L=10000	1	NIL	IS: 4229-92 6.6, VAR. L 2	NIL
13	EYELET	2	SE61262	NIL	NIL
12	NAME PLATE	1	CC61188	NIL	NIL
11	ANGLE Moulding 2X47X55	1	NIL	IS: 737-86 31000 HZ	*
10	REXINE 800X1900	1	NIL	ROSO/SPEC. C-9503, TYPE-II	NIL
9	REXINE 60X65	2	NIL	ROSO/SPEC. C-9503, TYPE-II	*
8	FELT 6X10X120	2	NIL	IS: 1719-88 TAB-1, MEDIUM	NIL
7	FELT 6X29X563	1	NIL	IS: 1719-88 TAB-1, MEDIUM	NIL
6	FELT 6X14X800	2	NIL	IS: 1719-88 TAB-1, MEDIUM	NIL
5	FELT 6X80X563	1	NIL	IS: 1719-88 TAB-1, MEDIUM	NIL
4	P.U.FOAM FOR BACK REST SIDE	1	AE61457	NIL	ITEM-4
3	P.U.FOAM FOR BERTH SIDE	1	AE61457	NIL	ITEM-3
2	COMPREG PANEL 4X555X800	1	NIL	ROSO/SPEC. C-9407, TYPE-I	NIL
1	FRAME	1	AE61456	NIL	NIL

WELD LENGTH	ITEM	DESCRIPTION & DIMENSIONS	ASSEMBLY	DETAIL DRG	MATL. & SPEC.	REMARKS
NIL	M	SEAT & UPPER BERTHS				
WEIGHT	FILE	ae61455d.prt (3D)				
14.500	KG	BACK REST CUM BERTH (SHORT)				
S. AREA		FOR ACCN COACH				
NIL	M <sup>2</sup>	RAIL COACH FACTORY, KAPURTHALA				
LENGTH/DIA		INDIAN RAILWAYS STANDARD				
NIL	M	REF. DRG. NO. NIL				
WIDTH/THICK.		PL NO. NIL				
NIL	M	DRG. NO. AE61455				
HEIGHT		N.R.				
NIL	M	DATE OF FIRST ISSUE: 09/12/1998				

ANY MANUAL ALTERATION SHALL AUTOMATICALLY RENDER THIS DRAWING INVALID.  
FOR UNTOLERANCED DIMENSIONS REFER MDG0008

DETAIL DRGS STARTING WITH "LI" ARE INTERNAL REFERENCE LISTS ONLY AND ARE NOT FOR ISSUE.