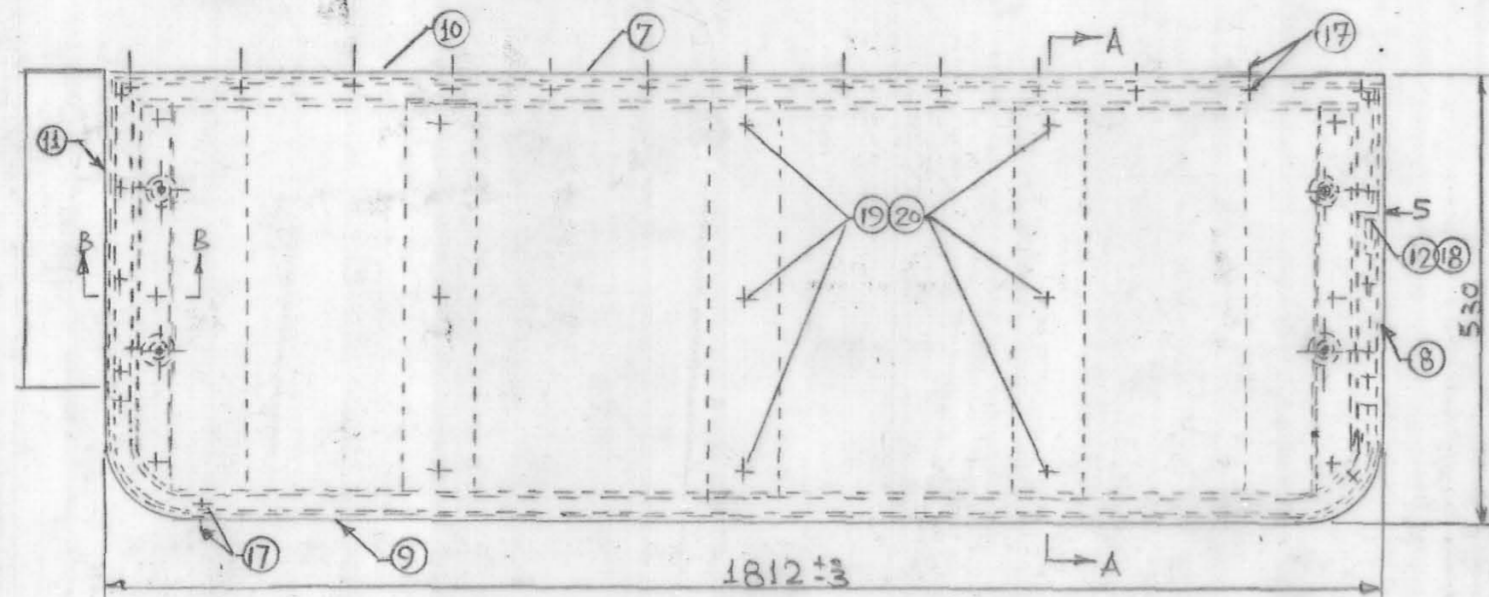


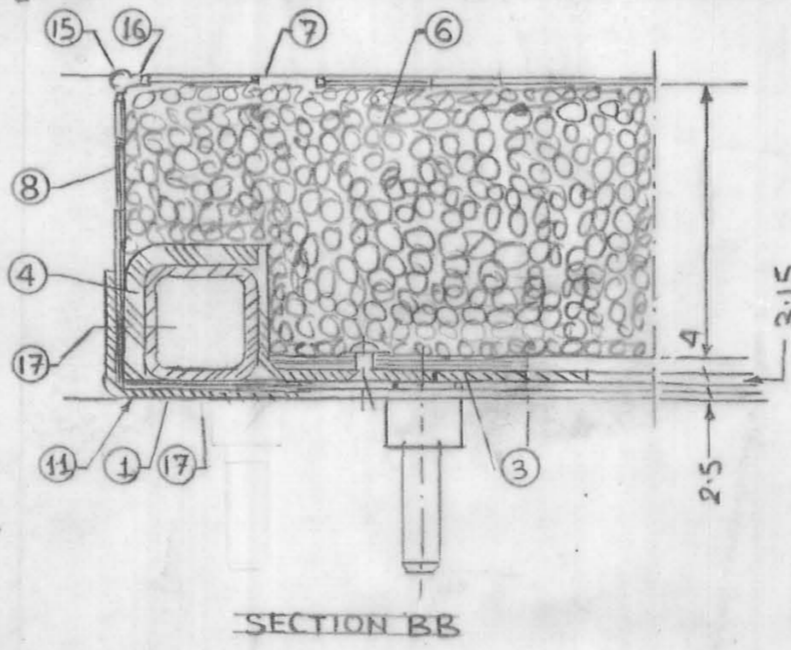
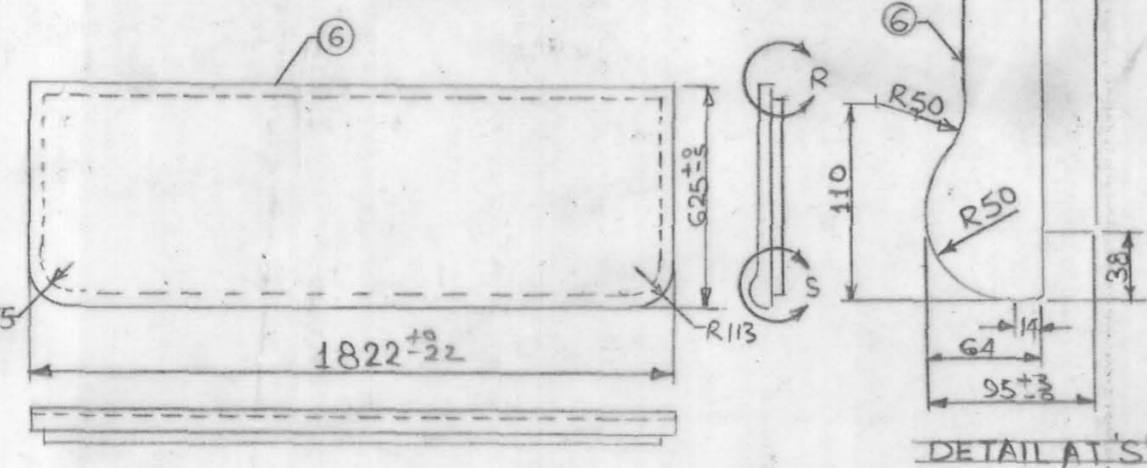
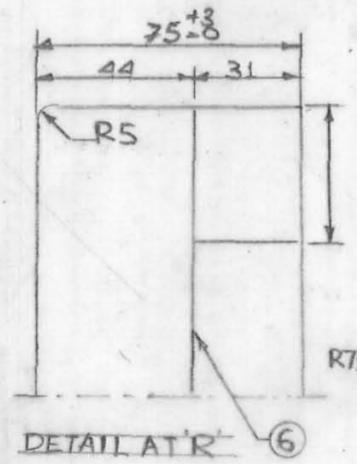
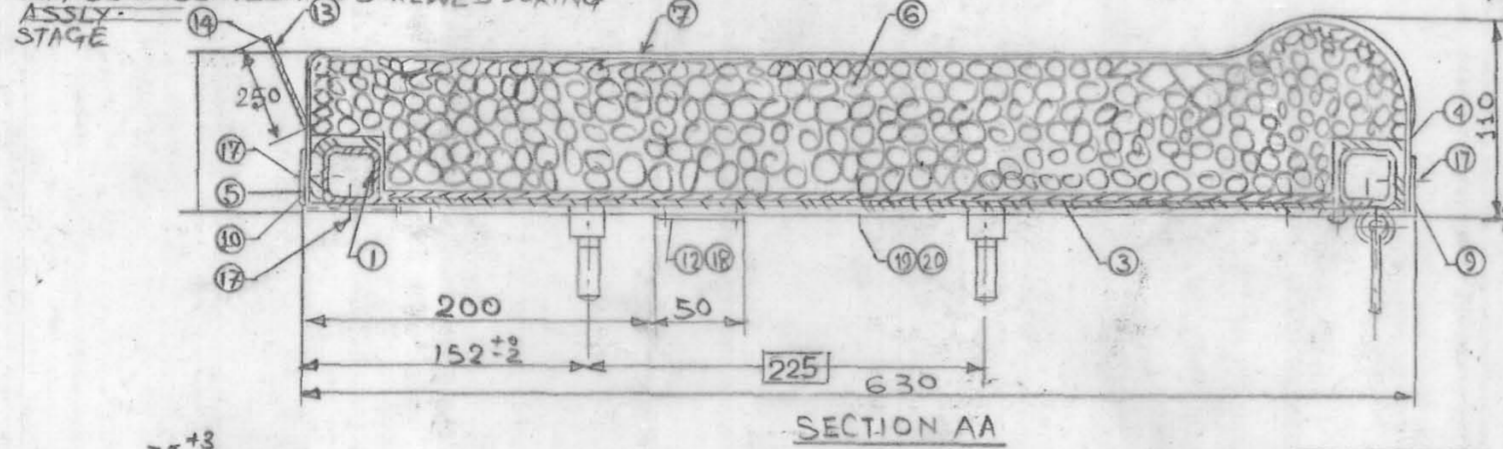
Q	14/7/2014	ITEM NO. 8 ADDED IN REF. DRG. AEG1443 FRAME	AWM/R	AWM/R	AWM/R	AWM/R	AWM/R
CRWS ALT.	DATE	DESCRIPTION	SSE/FURN	SSE/CARP.	AWM/R	DY.CME	

ALT. NO.	ALT. DATE	ZONE	ALTERATION	AUTHORITY
C	22/3/14	J-15 I-15 D-11	1. ITEM 2 DELETED 2. DESCRIPTION AND MAT. SPEC. OF ITEM 6 WAS FOAM RUBBER 95X625X1822 2MPTS-013. 3. NOTE 1,9,10 UPDATED, NOTE 12 DELETED AND NOTE 13 ADDED	DIC NO. MDO40011
d	28/7/14	JG-374	CORE HOLES DELETED FROM THE BOTTOM OF P.U. FOAM	DIC NO. MDO40043



- NOTE:**
- P.U. FOAM TO BE PASTED TO THE COMPREG WITH APPROVED BRAND OF WATER PROOF GLUE.
  - NECESSARY CUT-A-WAYS TO BE DONE TO SUIT AT SITE.
  - THREAD SHOULD BE DYED & BONDED AND THE COLOUR OF THREAD SHOULD MATCH WITH THE COLOUR OF REXINE. THE PITCH OF THE STITCHED SHALL BE 2 TO 3mm.
  - COLOUR OF REXINE TO BE BLUE 315 OF BHOR AND STAMPED WITH 'INDIAN RLYS' CREST TO RDSO/SK-68068 ALT.-2.
  - THE LENGTH OF FLAP (ITEM-14) SHALL BE SO ADJUSTED THAT IT SHOULD NOT BE VISIBLE FLAP PROVIDED SHALL BE OF DOUBLE FOLD.
  - COMPREG TO BE TREATED AGAINST FUNGI, TERMITES, MARINE BORERS & OTHER INSECT ACCORDING TO REQUIREMENT OF PRESERVATION TREATMENT TO IS: 5539-69 TYPE-IV [COPPER, CHROME, ARSENIC COMPOSITION].
  - FELT (ITEMS 4 & 5) TO BE PASTED PROPERLY ON THE FRAME WITH APPROVED BRAND OF ADHESIVE.
  - PITCH OF TAPPING SCREW SHOULD NOT BE MORE THAN 150mm.
  - P.U. FOAM TO BE DIRECTLY MOULDED AND NOT TO BE FABRICATED.
  - SKIN OF P.U. FOAM SHOULD BE UNIFORM WITHOUT CRACKS OR JOINTS.

REXINE TO BE STICHED SUITABLY SO THAT FLAT MOULDING (ITEM-13) MAY BE INSERTED AND SCREWED DURING ASSLY. STAGE



- REXINE SHOULD BE STICHED IN SUCH A MANNER THAT NO FOLDS ARE VISIBLE AT THE CORNERS.
- ALTERNATIVELY MOULDED P.U. FOAM TO RDSO SPEC. C-8914 (REV. 1) MAY BE USED FOR ITEM 6.
- PROVISION OF FIRE BARRIER AROUND P.U. FOAM TO CLAUSE 2.2.3 OF RDSO/SPEC. 8914 SHOULD BE ENSURED.

ITEM NO.	DESCRIPTION	QTY	UNIT	IS: 1094-76 VAR-3	IS: 2016-67 ITEM-3 ALUMINIUM MDT5-057	IS: 2907 IS: 740-77 64430	IS: 7173-89	IS: 7173-89	IS: 4229-92 6.6 VAR. 12	IS: 1720-78	RDSO SPEC C-9503 TYPE-II	RDSO SPEC C-9503 TYPE-II	RDSO SPEC C-9503 TYPE-II	IS: 1719-88 TAB-1 MEDIUM	IS: 1719-88 TAB-1 MEDIUM	RDSO SPEC C-9407 TY-I	IS: 1094-76 VAR-3	AEG1443	NIL	NIL	
21	GADA CLOTH 1X200X700	2	NIL	NIL	NIL	NIL	NIL	NIL	NIL	NIL	NIL	NIL	NIL	NIL	NIL	NIL	NIL	NIL	NIL	NIL	NIL
20	PLAIN WASHER ALUMINIUM A 5.5	15	LHHW09	NIL	NIL	NIL	NIL	NIL	NIL	NIL	NIL	NIL	NIL	NIL	NIL	NIL	NIL	NIL	NIL	NIL	NIL
19	CSK. HD. RIVET 5X12	15	IS: 2907	IS: 740-77	NIL	NIL	NIL	NIL	NIL	NIL	NIL	NIL	NIL	NIL	NIL	NIL	NIL	NIL	NIL	NIL	NIL
18	TAPPING SCREW ISO 1481 ST 3.5X16-F	2	IS: 7173-89	NIL	MDTS-057	NIL	NIL	NIL	NIL	NIL	NIL	NIL	NIL	NIL	NIL	NIL	NIL	NIL	NIL	NIL	NIL
17	SLTD PAN HD TAPP SCREW STEEL STA. 2X16-F	74	LHHW03	IS: 7173-89	ITEM-39 MDT5-057	NIL	NIL	NIL	NIL	NIL	NIL	NIL	NIL	NIL	NIL	NIL	NIL	NIL	NIL	NIL	NIL
16	SEWING THREAD L=5000	1	NIL	IS: 4229-92 6.6 VAR. 12	#	NIL	NIL	NIL	NIL	NIL	NIL	NIL	NIL	NIL	NIL	NIL	NIL	NIL	NIL	NIL	NIL
15	COTTON THREAD φ3X5000	1	NIL	IS: 1720-78	NIL	NIL	NIL	NIL	NIL	NIL	NIL	NIL	NIL	NIL	NIL	NIL	NIL	NIL	NIL	NIL	NIL
14	REXINE 500X1835	1	NIL	RDSO SPEC C-9503 TYPE-II	@	NIL	NIL	NIL	NIL	NIL	NIL	NIL	NIL	NIL	NIL	NIL	NIL	NIL	NIL	NIL	NIL
13	FLAT MOULDING	1	CC-43359	NIL	L=1812	NIL	NIL	NIL	NIL	NIL	NIL	NIL	NIL	NIL	NIL	NIL	NIL	NIL	NIL	NIL	NIL
12	NAME PLATE	1	CC-61188	NIL	NIL	NIL	NIL	NIL	NIL	NIL	NIL	NIL	NIL	NIL	NIL	NIL	NIL	NIL	NIL	NIL	NIL
11	ANGLE MOULDING	2	CC-43353	NIL	L=443	NIL	NIL	NIL	NIL	NIL	NIL	NIL	NIL	NIL	NIL	NIL	NIL	NIL	NIL	NIL	NIL
10	ANGLE MOULDING	1	CC-43353	NIL	L=1812	NIL	NIL	NIL	NIL	NIL	NIL	NIL	NIL	NIL	NIL	NIL	NIL	NIL	NIL	NIL	NIL
9	ANGLE MOULDING	1	CC-43353	NIL	L=2084	NIL	NIL	NIL	NIL	NIL	NIL	NIL	NIL	NIL	NIL	NIL	NIL	NIL	NIL	NIL	NIL
8	SIDE REXINE 200X700	2	NIL	RDSO SPEC C-9503 TYPE-II	@	NIL	NIL	NIL	NIL	NIL	NIL	NIL	NIL	NIL	NIL	NIL	NIL	NIL	NIL	NIL	NIL
7	TOP REXINE 950X2035	1	NIL	RDSO SPEC C-9503 TYPE-II	@	NIL	NIL	NIL	NIL	NIL	NIL	NIL	NIL	NIL	NIL	NIL	NIL	NIL	NIL	NIL	NIL
6	P.U. FOAM 95X625X1822	1	NIL	RDSO SPEC C-8914	X	NIL	NIL	NIL	NIL	NIL	NIL	NIL	NIL	NIL	NIL	NIL	NIL	NIL	NIL	NIL	NIL
5	FELT 6X66X1815	1	NIL	IS: 1719-88 TAB-1 MEDIUM	NIL	NIL	NIL	NIL	NIL	NIL	NIL	NIL	NIL	NIL	NIL	NIL	NIL	NIL	NIL	NIL	NIL
4	FELT 6X66X2950	1	NIL	IS: 1719-88 TAB-1 MEDIUM	NIL	NIL	NIL	NIL	NIL	NIL	NIL	NIL	NIL	NIL	NIL	NIL	NIL	NIL	NIL	NIL	NIL
3	COMPREG PANEL 4X537X1710	1	NIL	RDSO SPEC C-9407 TY-I	#	NIL	NIL	NIL	NIL	NIL	NIL	NIL	NIL	NIL	NIL	NIL	NIL	NIL	NIL	NIL	NIL
2	GADA CLOTH 830X2015	1	NIL	IS: 1094-76 VAR-3	NIL	NIL	NIL	NIL	NIL	NIL	NIL	NIL	NIL	NIL	NIL	NIL	NIL	NIL	NIL	NIL	NIL
1	FRAME			AEG1443	NIL	NIL	NIL	NIL	NIL	NIL	NIL	NIL	NIL	NIL	NIL	NIL	NIL	NIL	NIL	NIL	NIL

WELD LENGTH	ITEM	DESCRIPTION & DIMENSION	SCALE	SSE/REG	CPL
NIL	M	GROUP SEAT & UPPER BERTHS	1:5	CHKD	DUGL
40.000	KG	FILE 0061442J.B61(2D)	1:2	DRN	DHRM
NIL	M <sup>2</sup>	TRANSVERSE LOWER BERTH FOR ACCN COACH	1:1	DRM	COL
NIL	M	RAIL COACH FACTORY KAPURTHALA			
NIL	M	INDIAN RAILWAYS STANDARD			
NIL	M	DRG. NO. AEG1442			
NIL	M	DRG. NO. AEG1442			
NIL	M	DRG. NO. AEG1442			
NIL	M	DRG. NO. AEG1442			