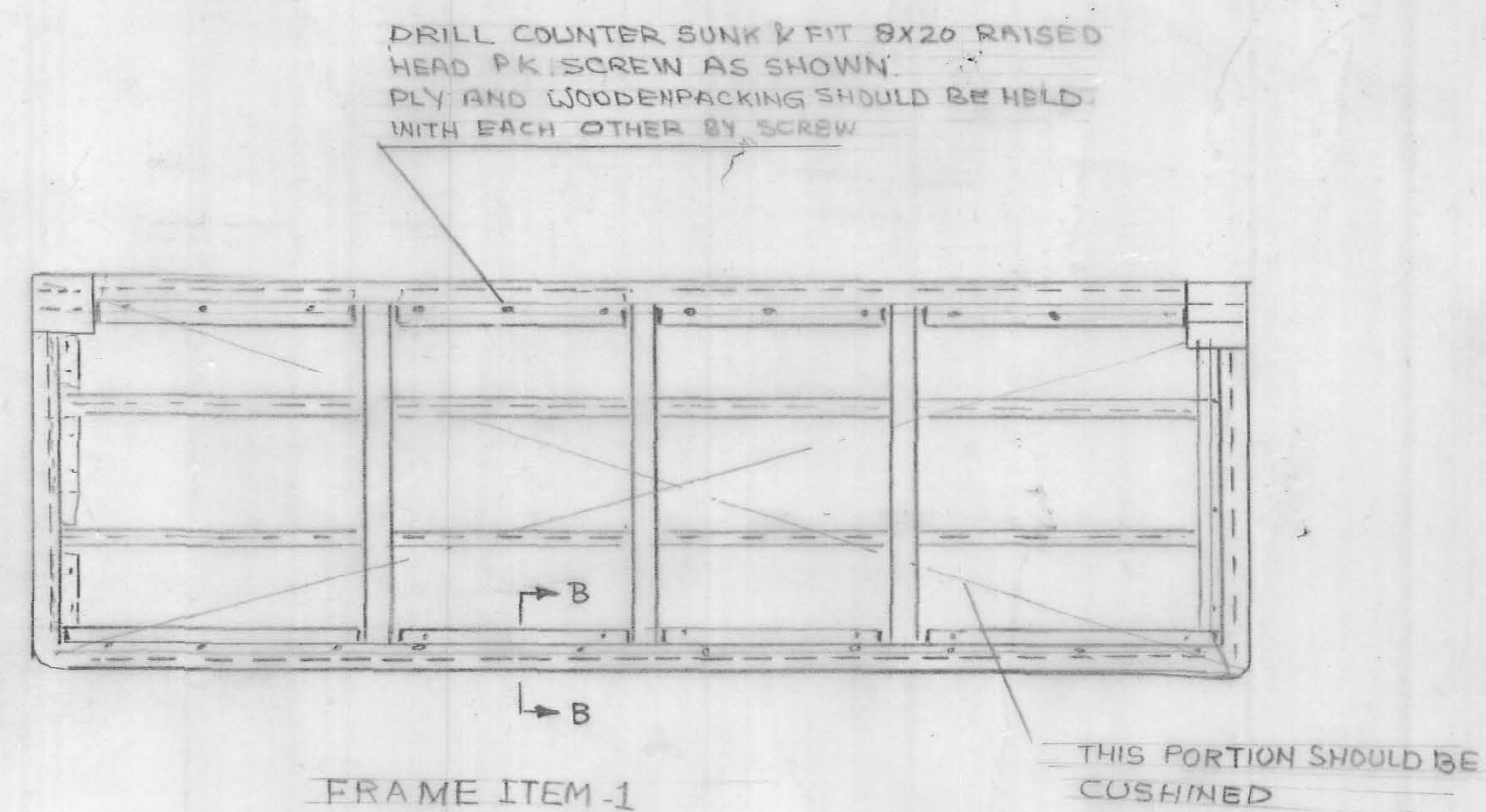
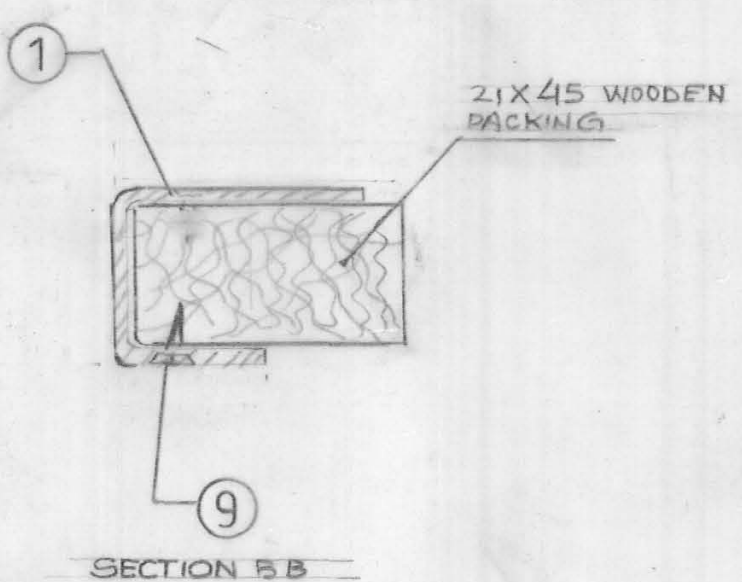


SECTION A-A
1.8X15 LENGTH SHOE
NAILS AT UNIFORM PITCH
60 NOS. NAIL-S. APP.



- NOTE 1
- 1 RECRON TO BE PASTED TO THE COMPREG WITH APPROVED BRAND OF WATER PROOF GLUE
 - 2 NECESSARY CUT-A WAYS TO SUIT AT SITE
 - 3 THREAD SHOULD BE DYED & BONDED AND THE COLOUR OF THREAD SHOULD MATCH WITH THE COLOUR OF REXINE THE PITCH OF THE STITCH SHALL BE 2 TO 3 MM
 - 4 REXINE RDSO SPEC RDSO/2008/CG-07 COLOUR CODE ALNAC-03
 - 5 COMPREG TO BE TREATED AGAINST FUNGL. TERMITE MARINE BORERS AND OTHER INSECT ACCORDING TO REQUIREMENTS OF PRESERVATION TREATMENT TO IS: 5539-69 TYPE-IV
 - 6 FELT AND REXINE PACKING TO BE PASTED PROPERLY ON THE FRAME WITH THE APPROVED BRAND OF ADHESIVE

ITEM NO.	DESCRIPTION	QTY	MAT & SPACE
11	FELT 3X53X 2700	1	IS 1719-88 TAG-1 MEDIUM RDSO C-K513
10	BERTH PANEL 530X1635	1	
9	SCREW R.S.D 8X20	30	IS 7173 - 76
8	REXINE (SIDE) 150X6000	1	SEE NOTE 4
7	REXINE (TOP) 1680X580	1	SEE NOTE 4
6	RECORN 530X1630X50	1	RDSO SPEC. C-K607 A Slit 122
5	PLAIN WASHER A 5.5	15	IS: 2016 - 67
4	C.S.K HEAD RIVET 5X12 (ALU)	15	IS: 2907 G4
3	COMPREG PLY 4X 530X 1635	1	RDSO/SPEC. C-9407 TYPE-I
2	WOODEN PACKING 21X45 X TOTAL LENGTH 4200 APP		
1	FRAME	1	DRG NO. CRW/SK 201 ALT 3

AWM
SSE FOR
SSE CARP
JE DRG
DRN

UPPER BERTH COMPLETE
RCF CN COACH

SCALE 1:5 - 1:1

WEST CENTRAL RAILWAY
COACH REHABILITATION WORK
SHOP N.S.Z BHOPAL
DRG.NO. C RW/SK_ 888

1 DRAWING DRAWN AS PER DETAILS GIVEN BY SSE CARPENTRY