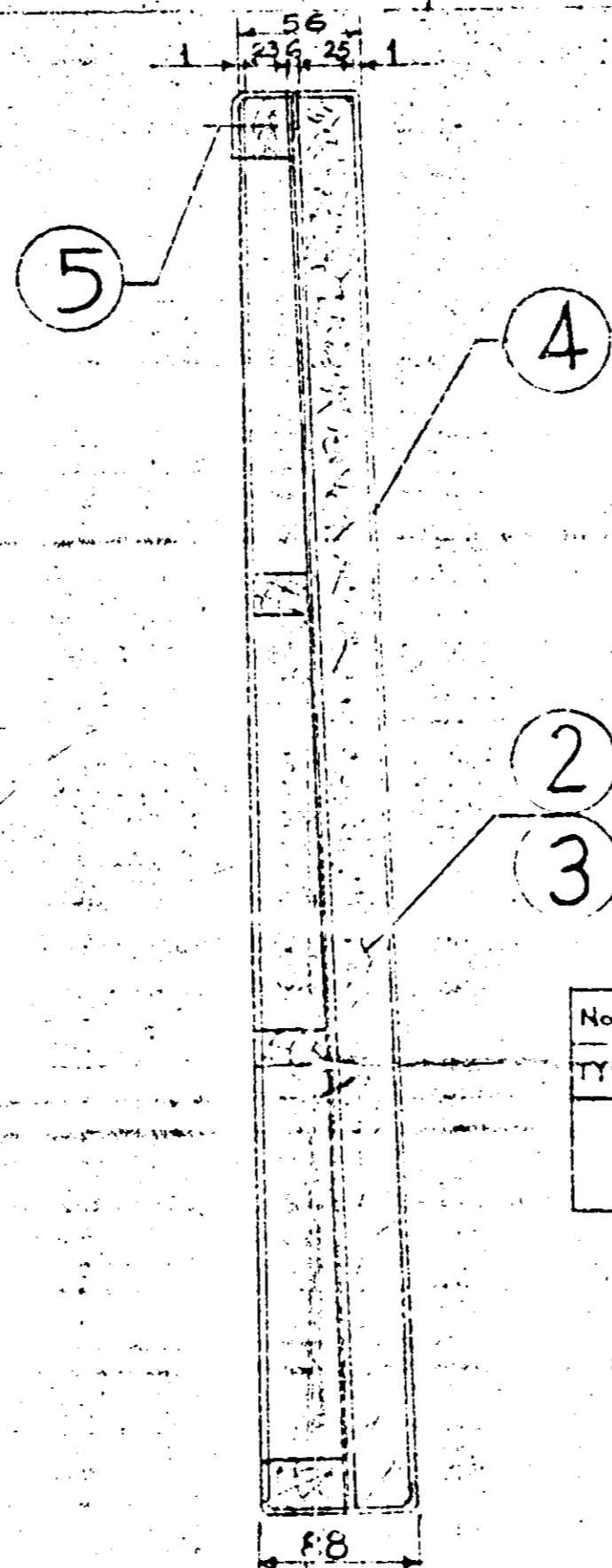
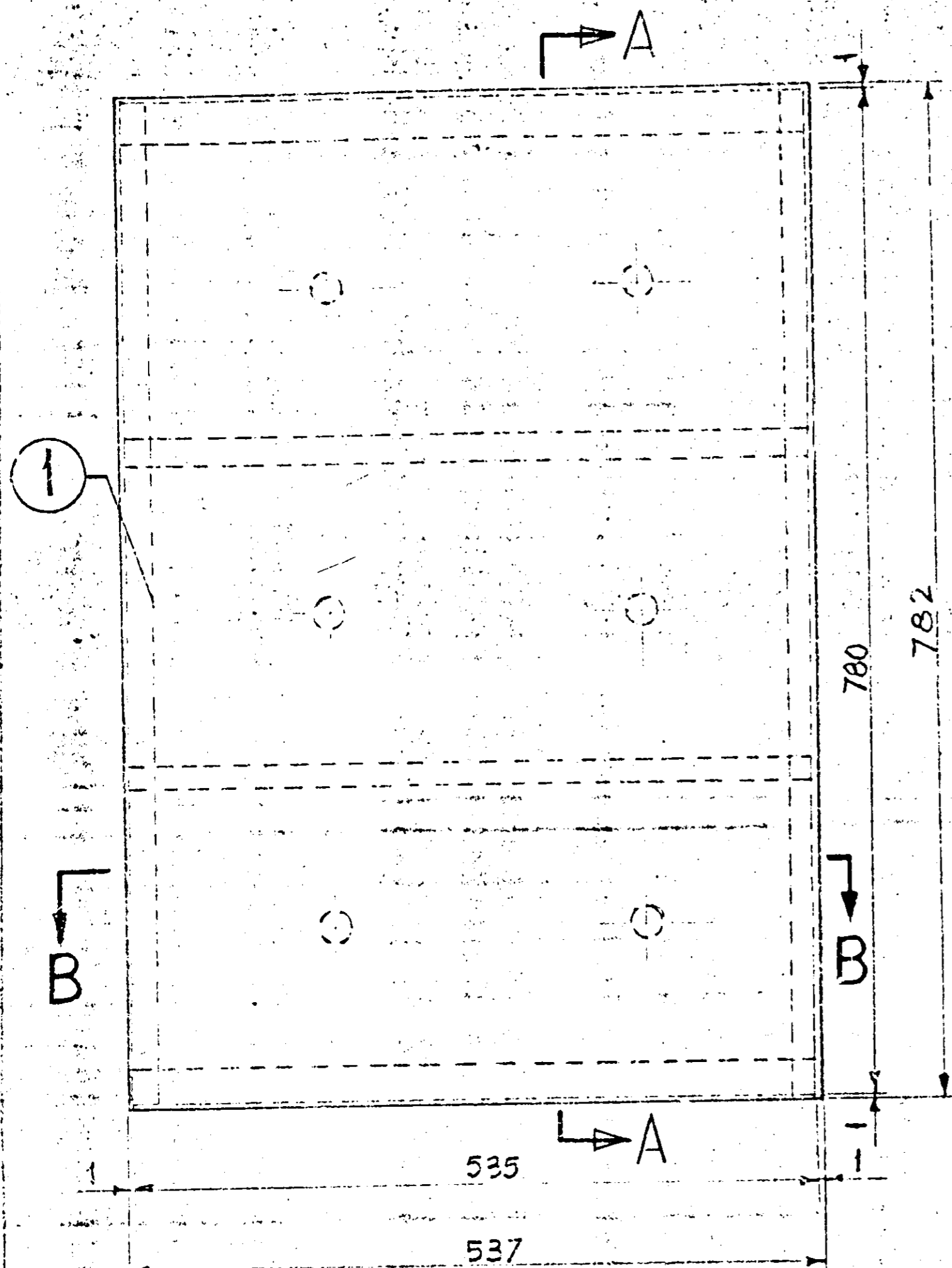


TCN-6-1-829

DESCRIPTION OF JIG OR TOOL	JIG OR TOOL NO.	V ROUGH MACHINED	(01) ROUGH CLEANING	ALTERATIONS
		W FINISH MACHINED		(1) DRG RETRACED
		WV FINE FINISH MACHD.		



NOTE:-

- * 1 COL-I APPLICABLE TO ATTENDANTS BACK REST WITH FOAM RUBBER CUSHION.
- ⊗ 2. COL-II APPLICABLE TO ATTENDANTS BACK REST WITH RUBBERISED COIR CUSHION
- 3, ALL CUSHIONS ARE TO BE PASTED TO THE PLYWOOD WITH APPROVED QUALITY GLUE.

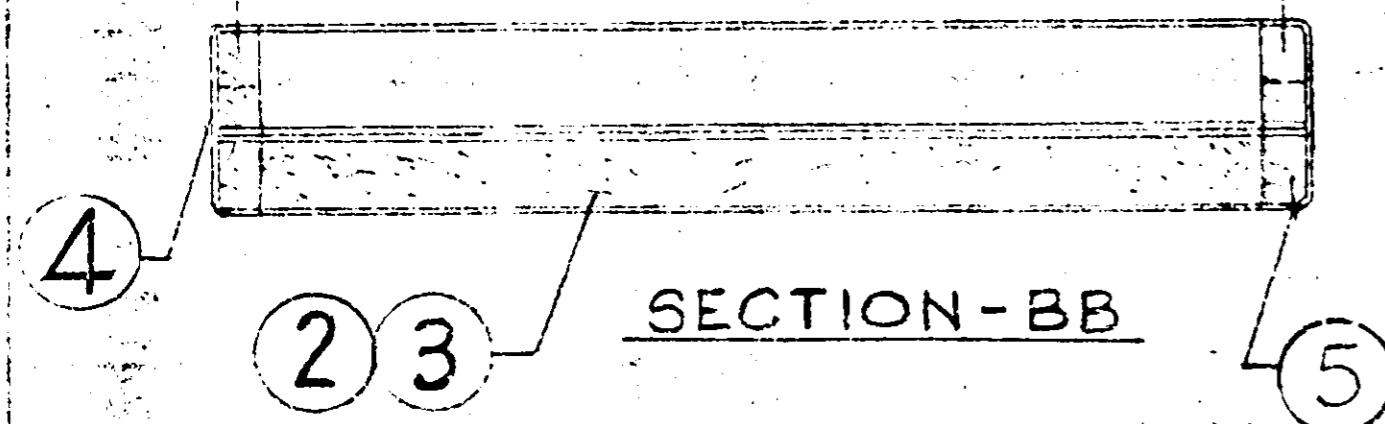
No. OFF. ASSYS. REQUIRED PER COACH				
TYPE OF COACH	COL-I	COL-II	COL-III	COL-IV
☒	*	-	-	-
	⊗	1	-	-

अनियंत्रित प्रति
Uncontrolled Copy

☒ TCN WITH CUSHIONED BERTH, SCH (WITH LINEN ROOM)

CONTROLLED COPY

34



SECTION-AA

No. OFF	DESCRIPTION & DIMENSIONS	ITEM REF. DRG.	MAT. & SPEC.	REMARKS
X	CUT LATH NAILS 1.8x15	5	IRS: 118:723 (72)	X AS REQUIRED
I	RAXIN COVER 1x875x1075	4	IRS: L156 GRADE-A	
I	RUBBERISED COIR CUSHION	3	TCN-6-1-801	ITEM - 5
-	FOAM RUBBER	2	TCN-6-1-817	ITEM - 5
I	BACK REST FRAME	1	TCN-6-1-828	
IV	GROUP			
PER ASSY.	BACK REST COMPLETE FOR ATTENDANTS SEAT			
PER ASSY.	INDIAN RAILWAY STANDARDS			

TCN-6-1-810
ASSEMBLY DRAWING

RAIL COACH FACTORY
KAPURTHALA.

TCN-6-1-829