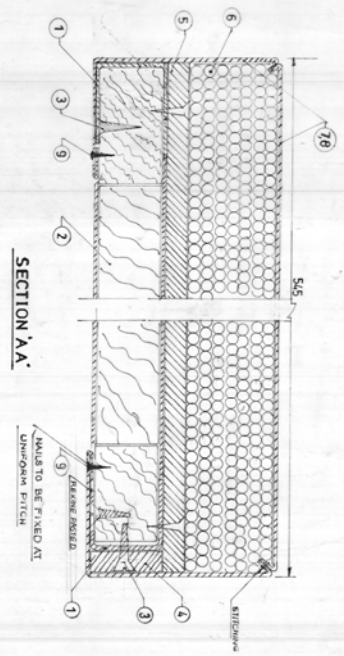


LH DRAWN/RH OPPOSITE



SECTION 'A-A'



ITEM NO 1

- NOTE:
1. MATERIALS GIVEN TO BE SAME TO SHED AT SITE
  2. QUALITY SHALL BE CHECKED BY SUPERVISOR AND QUANTITY SHALL BE CHECKED BY SUPERVISOR
  3. GOOD QUALITY MATERIALS AND FINISH SHALL BE MAINTAINED THROUGHOUT
  4. MATERIALS SHOULD BE DRY AND BOUND AND COLOR OF FINISH
  5. SHOULD MATCH WITH THE COLOR OF REMAINING
  6. ALL JOINTS SHOULD BE PROPERLY JOINED
  7. ALL JOINTS SHOULD BE PROPERLY JOINED
  8. ALL JOINTS SHOULD BE PROPERLY JOINED
  9. ALL JOINTS SHOULD BE PROPERLY JOINED

1	23	2020	NOTE NO 7 DELETED AND 8 AND 9	ADDED	DATE	BY	SCALE 1:1	1:5
<p><b>LONG SEAT COMPLETE FOR SLR/GS BEWL COACH</b></p> <p>WEST CENTRAL RAILWAY COACH REHABILITATION WORKSHOP NISHAT PURA BHOPAL</p> <p>DRG. NO C RW/SK847</p>								

Sl. No.	Description	Qty	Unit	Spec/Ref
1	STEEL PLATE 1800 X 545 X 10	1	NO	IS 2062
2	STEEL PLATE 1800 X 545 X 8	1	NO	IS 2062
3	STEEL PLATE 1800 X 545 X 6	1	NO	IS 2062
4	STEEL PLATE 1800 X 545 X 4	1	NO	IS 2062
5	STEEL PLATE 1800 X 545 X 3	1	NO	IS 2062
6	STEEL PLATE 1800 X 545 X 2	1	NO	IS 2062
7	STEEL PLATE 1800 X 545 X 1	1	NO	IS 2062
8	STEEL PLATE 1800 X 545 X 0.5	1	NO	IS 2062
9	STEEL PLATE 1800 X 545 X 0.2	1	NO	IS 2062