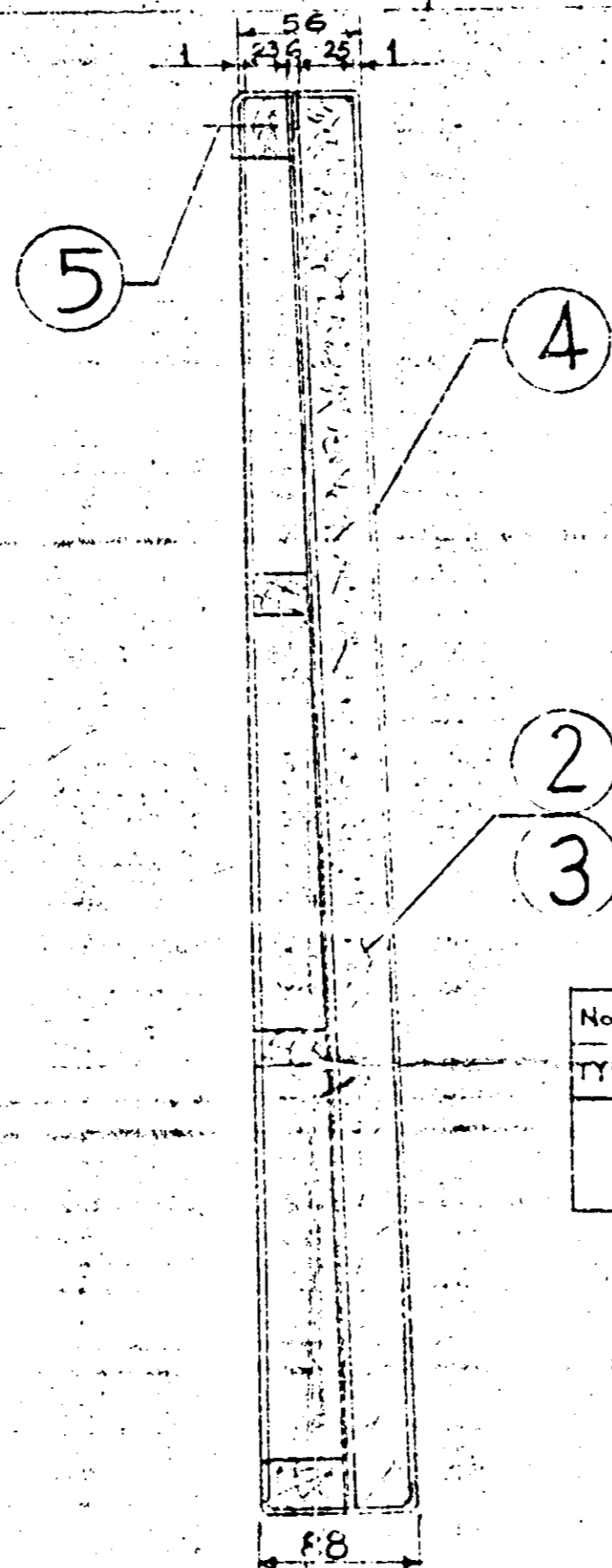
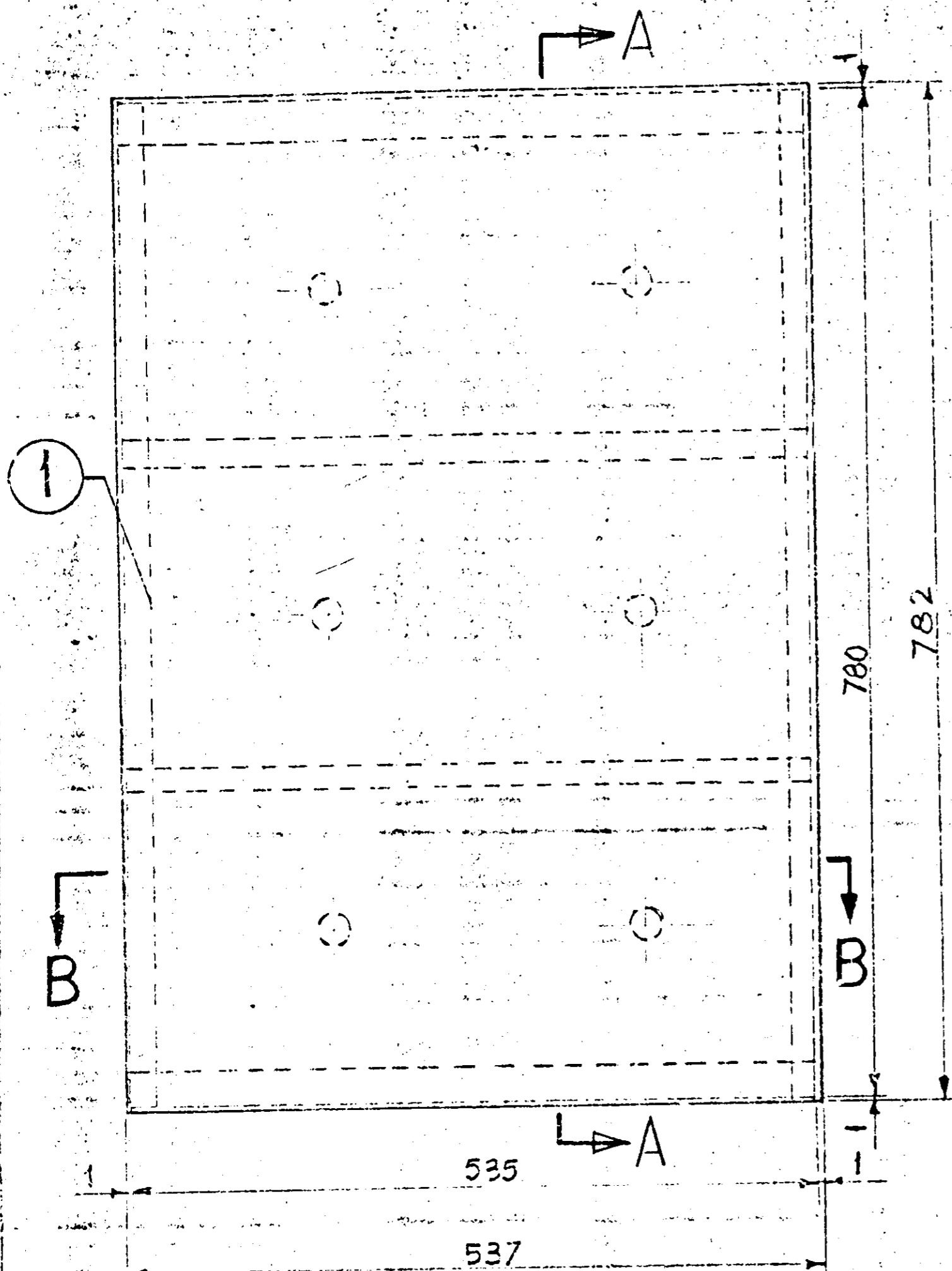


TCN-6-1-829

DESCRIPTION OF JIG OR TOOL	JIG OR TOOL NO.	V ROUGH MACHINED	(01) ROUGH CLEANING	ALTERATIONS
		W FINISH MACHINED		(1) DRG RETRACED
		WV FINE FINISH MACHD.		



**NOTE:-**

- \* 1 COL-I APPLICABLE TO ATTENDANTS BACK REST WITH FOAM RUBBER CUSHION.
- ⊗ 2. COL-II APPLICABLE TO ATTENDANTS BACK REST WITH RUBBERISED COIR CUSHION.
- 3. ALL CUSHIONS ARE TO BE PASTED TO THE PLYWOOD WITH APPROVED QUALITY GLUE.

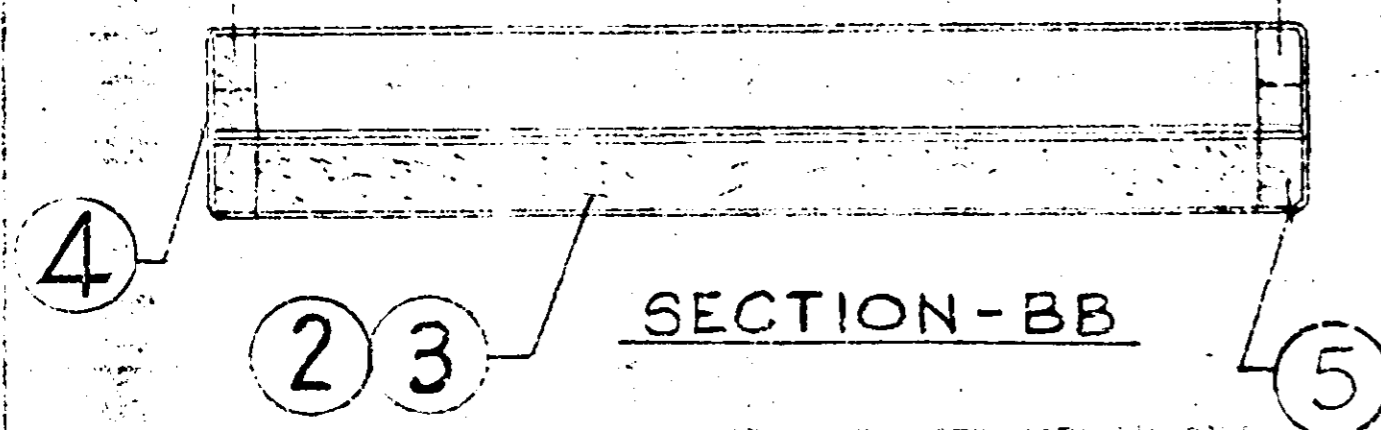
No. OFF ASSYS. REQUIRED PER COACH				
TYPE OF COACH	COL-I	COL-II	COL-III	COL-IV
☒	*	-	-	-
	⊗	1	-	-

अनियंत्रित प्रति  
Uncontrolled Copy

☒ TCN WITH CUSHIONED BERTH, SCH (WITH LINEN ROOM)

CONTROLLED COPY

34



**SECTION-AA**

No. OFF	DESCRIPTION & DIMENSIONS	ITEM REF. DRG.	MAT. & SPEC.	REMARKS
5	CUT LATH NAILS 1.8x15	13:723 (72)	IRS. L.P.G. GRADE-A	X AS REQUIRED
4	RAXIN COVER 1x875x1075			ITEM - 5
3	RUBBERISED COIR CUSHION	TCN-6-1-801		ITEM - 5
2	FOAM RUBBER	TCN-6-1-817		
1	BACK REST FRAME	TCN-6-1-828		
<b>GROUP</b>				
<b>BACK REST COMPLETE FOR ATTENDANTS SEAT</b>				
<b>INDIAN RAILWAY STANDARDS</b>				

TCN-6-1-810  
ASSEMBLY DRAWING

BY: CME/D

RAIL COACH FACTORY  
KAPURTHALA.

TCN-6-1-829

H2-006