

vkyksd nos

Ekq[; ; Wf=d batlfu; j

Alok Dave

Chief Mechanical Engineer

D.O. No. M.G.01-909



lkf' pe e/; jsy

West Central Railway

Ekqki zdkd dk; kzy;

bflnj k ekdW]

tcyij - 482 001

General Manager's Office

Indira Market

Jabalpur 482 001

13th March-2013

Dear Shri Chandra,

Sub: Performance of Mechanical Department - PCDO for the month of Feb-2013.

1. HIGHLIGHTS

- 1.1 During the month, 42 BOXNHL rakes were formed as CC rakes. The no. of NKJ based CC rakes on 28.02.13 was 204.
- 1.2 CRWS/ BPL achieved an MLR outturn of 50 Coaches and carried out IOH of 18 Coach bogie set.
- 1.3 Kota workshop achieved an outturn of 410 VUs against the target of 405 VUs.
- 1.4 Kota workshop has turned out 10 BVZI wagons against the target of 10 VUs. All BVZI's have been provided with twin pipe system.
- 1.5 In Kota workshop, deposit work of conversion of 170 nos BTPGLC wagons to BTPGLR has been started in the month of July. During current month 07 BTPGLC wagons have been converted & turned out. So far 106 BTPGLC wagons have been converted & turned out.
- 1.6 During the month, Kota workshop has retrofitted ATLS in 27 nos of BFKHN wagons during POH. Till Feb-13, 171 BFKHN wagons have been retrofitted with ATLS.
- 1.7 Under RSP work of conversion of 600 Nos. of BOXN to BOXNHAM wagons allotted to WRS/ KTT. 65 wagons have been converted and one rake of 59 wagons have been turned out in rake form on 23.02.2013, which is based at NKJ.
- 1.8 16 trips of 05 special trains comprising of total 309 coaches have been maintained by JBP division.
- 1.9 54 additional coaches have been provided in various trains to reduce the long waiting list in passenger trains. In addition to this, temporary augmentations of 50 coaches have been provided in trains.

1.10 CTS scheme was stopped at ET on 20.10.2012 as contract validity expired. For new contract of CTS scheme, the tender is under finalisation. Till finalisation of CTS contract, a short contract of cleaning work of AC coaches started for short period of 120 days from 11.11.2012, with this 689 trains, (2119 AC coaches) were cleaned at ET during the Month.

1.11 Diesel loco outage (freight +coaching) during current month is 103.19% of the target i.e.8.89 more locos/ day than the target. The average outage (freight and coaching) for the year 2012-13 is 102.35% of the target.

1.12 Certification of rakes:

During the month and Cumulative	Rakes offered for examination at nominated TXR	Rakes certified as Premium end to end and CC rakes	% of rakes certified as Premium end to end and CC rakes
Feb. 2013	438	416(305+111)	94.97%
Feb. 2013	600	564	94.00%
Cum 2012-13	5972	5761	96.46%
Cum 2011-12	6017	5772	95.93%

1.13 Out of NPOH arising of 316 BOXNs, 256 wagons (84.17%) were repaired in the sick lines Feb, 2013.

1.14 Progress of Model Rakes:

The mockups of M/s HFGW have been approved by design evaluation team vide note no. CRWS/BPL/Model Rake/Refurbishing/2007/46/Pt.VIII dtd. 09.02.13.

The concept of furnishing and fittings developed for Model Rake Project were demonstrates at Coach Care Centre, New Delhi in the month of Feb-13. For this purpose, two coaches on which mockups have been prepared by M/s HFGW and stationary mockups & material used for demonstration on actual coaches at CRWS by M/s KIEL was transported to New Delhi. These concepts have been widely appreciated not only by Railway Board officials but by public/ media at large. These have been inspected by Hon'ble MR, CRB & MM on 28th February 2013.

1.15 Utilisation of funds under Plan Head 41:

Against Revised Grant of Rs. 652.84 lakhs for 2012-13, funds utilized up to Jan'13 are Rs. 575.00 lakhs, which is 88.07% of Revised Budget Grant.

1.16 Utilisation of funds under Plan Head 42:

Against Revised Grant of Rs. 3005.02 lakhs for 2012-13, funds utilized up to Jan'13 are Rs.2210.00 lakhs, which is 73.54% of Revised Budget Grant.

1.17 Status of Coaching items

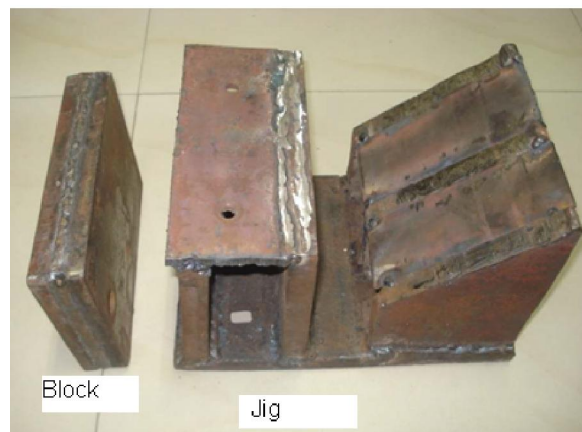
Status of coaching items as per Railway Board letter No. 2007/M(C)/139/9 dated 30.04.10 is enclosed as ANNEXURE-IX.

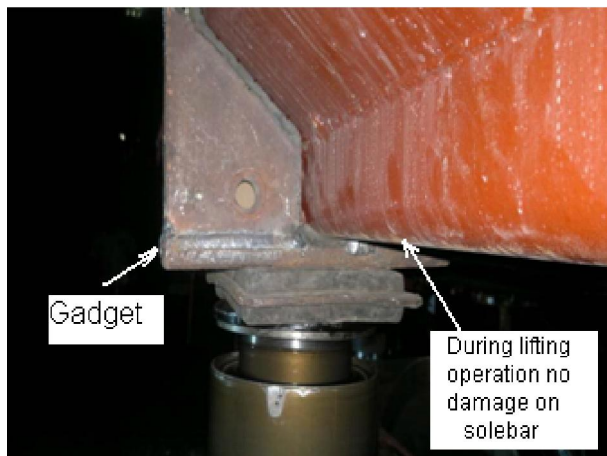
1.18 Workshop Portal: WCR has regularly fed data of POH out-turn, RSP work, overdue POH, cycle time, unit cost, incentive performance, local passing and staff strength in the workshop portal.

2. INNOVATIONS & SYSTEM IMPROVEMENT –

2.1 Gadgets to lift loaded BCNHL and BOXNHL wagons:-

Gadgets for lifting loaded BOXNHL/BCNHL wagons during wheel changing at road side stations have been developed by divisional wagon Repair depot, Kota. These gadgets have been prepared in house using scrap material and trials on these gadgets have been conducted successfully. The results of the trials were very effective as no damage was noticed on sole bars after lifting loaded BOXN/BCNHL wagons. The use of these gadgets will eliminate the problem of; (1) Sole bar bending (2) Transshipment of BOXNHL/BCNHL wagons.





2.2 Starter Motor Test Bench of WDP4 Locos:- In WDP4 locomotive, two starter motors are used for cranking the engine. There was no testing facility available to ensure performance of starter motor after overhauling.

Diesel loco shed Itarsi has developed starter motor test bench . Following parameter can be checked at test bench:-

1. Current drawn
2. Motor rpm
3. Motor plunger operation,
4. Inter lock, Operation and,
5. Necessary clearances,

The above parameter satisfies the healthy condition of starter motor. This test bench is helpful for improving reliability of starter motor.



2.3 Provision of horn switches in Driver cabine in WDP4 locomotive:- In EMD locomotives horn switches are provided in both control console. Due to this ALP (on non working control console) has to turn round back every time he needs to blow the horn,

which is very inconvenient. To overcome the problem horns switches are provided on the front side of the driver seat to facilitate ease in operation of horn blowing by ALP's DLW is also being advised to modify location of horn switches on new locomotives.



3. Disciplining of errant Vendors –

Poor performance of M/s S.D.Technical Services Pvt Ltd Gurgaon as per PO schedule for non-delivery of complete set of air brake (Consisting 23 items) has been highlighted to QA (Mech) Directorate of RDSO.

4. Line haul cost – Necessary monitoring is being done.

5. ASSISTANCE REQUIRED:

Approval of Group Incentive Report for CRWS/BPL:

- 5.1 Review study of Group Incentive Scheme (GIS) at CRWS/ BPL has been carried out by RITES and GIS review report is under sanction with Railway Board. It is kindly requested to expedite the approval of GIS and communicate the sanction
- 5.2 26 nos. WDP4 locos are required for proper mail express link.

With kind regards,

Yours sincerely,

(Alok Dave)

Shri Keshav Chandra

Member (Mechanical)

Railway Board

New Delhi

Copy:

Shri S.K. Sharma, AM (PU), Rly. Board, New Delhi

Shri R.Vijaya Mohan, AM (ME), Rly. Board, New Delhi

Shri A.K.Puthia, Adviser Mech. Engg. (Projects), Rly. Board, New Delhi

Copy with relevant Annexure to:

1. Shri Vivek Kumar, Executive Director Mech. Engg. (Tr.), Rly. Board, New Delhi
2. Shri Ashesh Agarwal, Executive Director Mech. Engg. (Fr.), Rly. Board, New Delhi
3. Shri Shailendra Singh, Executive Director Mech. Engg. (Chg.), Rly. Board, New Delhi
4. Shri Sanjay Chadha, Executive Director Mech. Engg. (W), Rly. Board, New Delhi

LIST OF ANNEXURES

vuyxud I Annexure I	nqkVukxLr ošuka o dkpka dk fui Vkj DISPOSAL OF ACCIDENT INVOLVED WAGONS & COACHES
vuyxud II Annexure II	Ok"KZ 2012&13 ds fy, ; kstuk 'kh"KZ fuf/k dk mi ; ksx PLAN HEAD FUND UTILISATION OF YEAR 2011-12
vuyxud III Annexure III	jktLo ekkkka ds [kpZ dh fLFkfr EXPENDITURE POSITION OF REVENUE DEMANDS
vuyxud IV Annexure IV	ed[; foHkkx iæq[k@foHkkx iæq[kka }kj k ; kf=d vuqkkkxka dk fujh{k.k INSPECTIONS CARRIED OUT BY PHOD/HODs OF MECHANICAL DISCIPLINE.
vuyxud V Annexure V	dkj i kjšV I g {kk ; kstuk dh fLFkfr STATUS OF CORPORATE SAFETY PLAN
vuyxud VI Annexure VI	byDVkfud bu eks ku Hkkj I rq dk fu"i knu PERFORMANCE OF ELECTRONIC IN MOTION WEIGHBRIDGES
vuyxud VII Annexure VII	byDVkfud bu eks ku Hkkj I rq dk LFkki uk , oa dk; fLFkfr INSTALLATION & FUNCTIONING OF ELECTRONIC IN-MOTION WEIGHBRIDGES
vuyxud VIII Annexure VIII	o"KZ 2012&13 gsrq ifjla fRr; kll vtZu fuekZk , oa i frLFkki u PROGRESS OF WORKS UNDER PLAN HEAD-42
vuyxud IX Annexure IX	dkfpax enka dh fLFkfr STATUS OF COACHING ITEMS.
vuyxud X Annexure X	dkp , oa ošuka ds egRo iw kZ vkj , I ih dk; Z dh orZeku fLFkfr PRESENT STATUS OF IMPORTANT RSP WORKS FOR COACHES AND WAGONS

Annexure- I

DISPOSAL OF ACCIDENT INVOLVED WAGONS & COACHES

DETAILS OF ACCIDENT INVOLVED WAGONS LYING ON TRACK SIDE

e.My Div.	Total No. of wagons lying at the end of the month	No. of wagons lying for more than 3 months	No. of wagons lying for more than 6 months	Remarks
JBP	0	0	6	Auction completed & wagon handed over for cutting on 27.02.2013.
BPL	0	0	3	Awaiting removal.
KTT	0	0	0	-
TOTAL	0	0	9	-

DETAILS OF ACCIDENT INVOLVED COACHES LYING ON TRACK SIDE

e.My Div.	Total No. of coaches lying at site (a)		No. of coaches Salvageable (b)		No. to be salvaged but lying for less than 1 month (c)		No. to be disposed awaiting at site but more than 1 month (d)		PDC for salvaging of (c)	PDC for disposal of (d)	No. salvaged during the month	
	AC	Non- AC	AC	Non- AC	AC	Non- AC	AC	Non- AC			AC	Non- AC
BPL	0	0	0	0	0	0	0	0	NA		0	0
JBP	0	0	0	0	0	0	0	0	NA		0	0
KTT	0	0	0	0	0	0	0	0	NA		0	0
TOTAL	0	0	0	0	0	0	0	0	NA		0	0

[0k"kz 2012&13 ds fy, ; kst uk ' kh"kz fuf/k dk mi ; ksx](#)
PLAN HEAD FUND UTILISATION OF YEAR 2012-13

(Figs. in Rs.000s)

; kst uk ' kh"kz Plan Head	I d kksf/kr chth Revised Grant 2012-13	uoEcj 2012 rd 0; ; %okLrfod ½ Expenditure up to Dec'2012 (Actual)	fnl Ecj 2012 rd 0; ; ½yxHkx ½ Expenditure up to Jan'2013 (Approx.)	chth dk ifr'kr %age on BG
Plan Head – 41	65284	57100	57500	88.07%
Plan Head – 42	300502	205600	221000	73.54 %

Note: - Booking of PH-41&42 has been given as per FA&CAO's letter No. HQ/Acs/Effy /Ear&Exp/2012 dated 20.02.2013.

jktLo ekkkk ds [kpZ dh fLFkfr

EXPENDITURE POSITION OF REVENUE DEMANDS

(Figs. Rs.in Lakh)

dZl a Sr. No.	fdZ kdyki Activity	chbZ 12&13 BE 12-13	chth 12&13 BG 2012-13	tykbZ ds vr ea chih B.P. to the end of Dec'2012	okLrfod [kpZ Actual Exp. Dec'2012	vf/kd@deh dk l f{klr dkj.k Brief Reasons for Excess/Short fall
ekkk l a[; k 5-C ekVo i koj dk vuj {k.k , oa ejEer DEMAND No. 5-C REPAIR AND MAINTENANCE OF MOTIVE POWER						
A	ESST. IN OFFICES C-100	1406.55	1373.80	1030.35	1029.27	Minor variation.
B	STEAM LOCOS C-200	0.00	0.00	0.00	0.00	
C	DIESEL LOCOS C-300	17308.55	15739.52	11804.64	10519.69	Minor variation.
TOTAL DEMAD No.5-C		18715.10	17113.32	12834.99	11611.96	
CREDIT C-910		-43.83	-160.26	-120.20	-62.77	Less credit received on the head than proportionate provision.
ekkk l a[; k 6-D dJst , oa oXu dh vuj {k.k , oa ejEer DEMAND No. 6-D REPAIR AND MAINTENANCE OF CARRIAGE & WAGONS						
A	ESST. IN OFFICES D-100	2519.91	2662.23	1996.67	1835.79	Minor variation.
B	CARRIAGE D-200	10805.59	11057.14	8292.86	7251.66	Less expenditure on the head than proportionate provision.
C	WAGONS D-300	12470.32	11925.41	8944.06	7923.79	Minor variation.
D	MISC. REP. & MAINT. D-600	-2547.11	-3344.01	-2508.01	-471.36	Variation appearing due to wrong booking under the head.
E	DMU COACHES D-700	0.00	0.00	0.00	0.00	
TOTAL DEMAD No.6-D		23248.71	22300.77	16725.58	16539.88	
CREDIT D-910		300.09	-201.12	-150.84	-88.39	Less credit received compared to proportionate provision for the month.
ekkk l a[; k 7-E l a a= mi dj . kka dh vuj {k.k , oa ejEer DEMAND No. 7-E REPAIR & MAINTENANCE OF PLANT EQUIPMENT						
A	PLANT & EQUIPMENT E-300	1931.49	1587.73	1190.80	1231.23	Minor variation.
B	EQUIPMENT E-810	584.07	299.90	224.93	193.61	Minor variation.
TOTAL DEMAND No. 7-E		2515.56	1887.63	1415.73	1424.84	
ekkk l a[; k 8-F ifjpkYu 0; ; py LVkhd YdJst , M oXu% DEMAND No. 8-F OPERATING EXPENSES ROLLING STOCK(C&W)						
A	OPERATING EXPENSES ROLLING STOCK F500	3773.42	3088.34	2316.26	2495.01	Minor variation
TOTAL DEMAND No. 8-F		3773.42	3088.34	2316.26	2495.01	

vuyXud -iv
Annexure-IV
; kf=d foHkkx

eq[; foHkkx iæq[k@foHkkx iæq[kka }kjk ; kf=d vuqHkkxka dk fujh{k.k

INSPECTIONS CARRIED OUT BY PHOD/HODs of Mech. Discipline.

I nHkz & vrfjDr I nL;] ; kf=d jsyos ckMZ dk fnukad 10-11-1998 i=kad 98@,
, e%, e%@fujh{k.k

{Ref: Addl. Member (Mech), Railway Board's letter no. 98/AM(M)/Inspection dated 10.11.1998}

eq[; foHkkx iæq[k rFkk foHkkx iæq[kka }kjk fd; s x; s fujh{k.k

dz I a	lknuke	Ekkg ds nksj ku fd; s x; s fujh{k.k. kka dh I a[; k		
		e.My	dkj [kkuk	vU;
1	eq[; ; kf=d bath-	2	1	-
2	eq[; dkj [kkuk bath	1	0	-
3	eq[; py 'kfDr bath	4	0	-
4	eq[; py LVkkl bath	5	0	-

e.My vf/kdkfj; ka }kjk ; kf=d vuqHkkxka dk fujh{k.k

dz I a	fujh{k.k dk iædj	vi f{kr		okLrfod fujh{k.k. kka dh I [a k	
		ekg ea	Ok"Kz ea I fpr	Ekkg ea	Ok"Kz ea I fpr
1	Mhty 'kM	84	938	91	847
2	dsjst , M oXu fMiks	162	1762	83	814
3.	jæd fujh{k.k	81	891	61	782
4.	Qvlyv fujh{k.k	48	528	33	507
5.	Qv ykM ij I ij pd	21	231	11	129
6.	, vkjVh@, vkj, ebz	3	33	4	76
7.	cd Mkm du	6	66	3	19
8.	jfuax : e	9	99	7	101
9.	Q; fyx ifr"Bku	12	132	4	40
10.	Dvcdax@yktth	15	165	11	127
11.	if'k{k.k Ldwy tM Vhl h@, I Vhl h	7	77	*	*
12.	vU; dkbz	0	0	14	185

lkf' pe e/; jsy ea dkbz if'k{k.k Ldwy tM Vhl h@, I Vhl h ugha gA

dkj i kjs'v l j {kk ; kst uk dh fLFkfr STATUS OF CORPORATE SAFETY PLAN

<u>dkj i kjs'v l j {kk ; kst uk 6.7</u> CORPORATE SAFETY PLAN 6.7			
<u>dkp i Fkdhdj .k @chthVhds e</u> Coach Detachment /BGTKM			
o"l 12&13 grq yf: TARGET FOR 12-13	ekg ds fy, fu"i knu PERFORMANCE FOR THE MONTH	ekg ds var rd fu"i knu PERFORMANCE UP TO THE MONTH	fVli .kh REMARKS
0.231	0.293	0.213	Improvement over target.

<u>dkj i kjs'v l j {kk ; kst uk 6-8</u> CORPORATE SAFETY PLAN 6.8			
<u>o'xu i Fkdhdj .k @chthVhds e</u> Wagon Detachment /BGTKM			

o"l 12&13 grq yf: TARGET FOR 12-13	ekg ds fy, fu"i knu PERFORMANCE FOR THE MONTH	ekg ds var rd fu"i knu PERFORMANCE UP TO THE MONTH	fVli .kh REMARKS
4.042	1.337	2.331	Improvement over target.

<u>dkj i kjs'v l j {kk ; kst uk 6-9</u> CORPORATE SAFETY PLAN 6.9			
<u>detkj cd 'kfr @chthVhds e</u> Poor Brake Power/BGTKM			

o"l 12&13 grq yf: TARGET FOR 12-13	ekg ds fy, fu"i knu PERFORMANCE FOR THE MONTH	ekg ds var rd fu"i knu PERFORMANCE UPTO THE MONTH	fVli .kh REMARKS
0.140	0	0.011	Improvement over target.

<u>dkj i kjs'v l j {kk ; kst uk 6-10</u> CORPORATE SAFETY PLAN 6.10			
<u>xkM# foHkktu @chthVhds e</u> Train Parting/BGTKM			

o"l 12&13 grq yf: TARGET FOR 12-13	ekg ds fy, fu"i knu PERFORMANCE FOR THE MONTH	ekg ds var rd fu"i knu PERFORMANCE UPTO THE MONTH	fVli .kh REMARKS
0.573	0.608	0.508	Improvement over target.

<u>dkj i kjs'v l j {kk ; kst uk 6-11,</u> CORPORATE SAFETY PLAN 6.11A			
<u>?kVuk, W i fr 10 yk[k vftir fdeh- es</u> INCIDENTENCES PER MILLION EKMS (Diesel locomotive)			

o"l 12&13 grq yf: TARGET FOR 12-13	ekg ds fy, fu"i knu PERFORMANCE FOR THE MONTH	ekg ds var rd fu"i knu PERFORMANCE UP TO THE MONTH	fVli .kh REMARKS
4.068	4.16	6.16	Total number of incidences during the month was 18.

byDVkfud bu eks'ku Hkkj I rqi dk fu"i knu

PERFORMANCE OF ELECTRONIC IN MOTION WEIGHBRIDGES

Ref: - Railway Board's letter No: 2004/ DEV. CELL/ IDEI/ 2 dt 18.06.07.

Sl. N.	Total no. of loaded rakes originated on the railway	No. of rakes weighed on Electronic In motion weighbridge of			No. of rakes not weighed	Reasons for non-weighment	Penalty realized
		WCR Railway		Non-railway			
1	2	3	4	5	6	7	8
1	JBP-495	NKJ	16		341	Weighment done as per requirement of Commercial department.	
2		Satna	8				
3		Kachhpura	11				
4		Khanna banjari	10				
5		Mehgaon	32				
6		Beohari	0				
7		Gosalpur	4				
8		JQSG*	11				
9		BSCW*	13				
10		JBRT*	13				
11		MSSG*	3				
12		PCL*	04				
13		Sakaria*	21				
14			DDCE*	8			
15		DDSG*	0				
16	BPL-284	Itarsi	0		284		
17	KTT-192	KTT	27		161		
18		SWM	4				
19		LKE	0				

*Private Weighbridge.

[byDVkfud bu eks ku Hkkj l rj dk LFkki uk , oa dk; fLFkfr](#)
**INSTALLATION & FUNCTIONING OF ELECTRONIC IN-MOTION
 WEIGHBRIDGES**

(Ref: Railway Board's letter No: 2004/ DEV. CELL/ IDEI/ 2 dt. 18.06.07)

eMy Division	Lfky@LVs ku Location /Station	fVli .kh Remarks	Pkkyw gkyr ea ejEer gsrq os fctz %or%eku ekg ea mi yC/krk% Weigh Bridge in working order (Availability in current month)
JABALPUR	NKJ	Commissioned on 02.05.08	100%
	Satna	Commissioned on 03.07.08	100%
	Kachhpura	Commissioned on 17.11.08	100%
	Khanna banjari	Commissioned on 11.05.08	73.7%
	Mehgaon	Commissioned on 07.01.09	100%
	Beohari	Commissioned on 01.11.09	57.4%
	Nunvara	Commissioned on 16.02.12	96.4%
	Gosalpur	Commissioned on 04.11.08	81.3%
BHOPAL	Itarsi	Commissioned on 24.04.09	100%
KOTA	Kota	Commissioned on 24.09.08	100%
	Sawai Madhopur	Commissioned on 15.12.01	100%

o"Kz 2012&13 gsrq ifjl i fRr; kV vtZu fuekZk , oa ifrLFkki u
ASSETS, ACQUISITION, CONSTRUCTION AND REPLACEMENT FOR 2012-13

Ref. :- DME(W),Rly Board L. No. 2007/M/(W)/964/14 dated: 08.03.2007

Figures in 000's of Rupees

SN	Name of Work	Year of approval	Latest sanctioned cost Whether detailed estimate sanctioned, If yes the date of sanction	Expenditure till end of previous financial year	Balance	Outlay for the current financial year RG 12-13	Cumulative Expenditure till current month	Additional funds required If any	Physical Progress (To be described in short)	Remarks	
1	2	3	4	5	6	7	8	9	10	11	12
1	CRWS/BPL - Augmentation of Facilities for Enhancing MLR OutTurn Capacity of Coaches 300 to 500 per year	2003-04	28.07.04	75712	49499	26213	4298	51008	0	Civil & Elect: Work completed. Mech:- All M&Ps received & commissioned. Roller Bearing cleaning Plant received on 16.08.11 and commissioned on 25.09.2011. PTC to be issued.	
2	NKJ- Augmentation of ROH shed at C&W Depot to achieve ROH of 500 BOX-N wagons per month	2003-04	28.11.03	50880	45349	5531	1	45430	0	Civil & Elect: - Work completed. Mech: - 01 no. EOT Crane Cap. 10T Tender No. OP-2040 & OP-2125 opened and discharged at COFMOW. Indent returned by COFMOW for revalidation. Indent submitted to COFMOW on 24.01.2013 after re-validation. Tender to be opened on 21.03.13.	
3	JBP Construction of coaching complex phase-II (Additional Pit Line).	2004-05	09.12.04	35586	31988	3598	1571	31988	0	Civil, Elect& Mech:- Work completed Bill of Rs.15.00 lakhs is to be passed for Mechanical portion.	



4	CRWS-BPL: Augmentation of capacity for mid-life rehabilitation of coaches from 500 to 750 per annum	2005-06	21.08.2006	466365	326065	140300	70000	380954	0	Civil- Work divided into 05 packages. Package-I, II & III completed. Another packages IV & V are in progress. Mech:- 37 M&Ps received including 02 Nos.EOT cranes 25T received on 03.07.2012 & under commissioning Gas manifold system & compressed air pipeline system are under procurement at COS.
5	WRS/KTT- Modernization of Wagon Repair Shop	2007-08	07.01.09	637046	22000	615046	22997	40879	0	GM/WCR has approved the execution of modernization of Kota workshop project under "turn key" methodology. It has been requested to AM(PU) Rly Bd on 12.09.12, 19.10.12 & 05.11.12 that RVNL may be asked to take up this work by their organization already existing at Kota.In this regard GM/WCR has also been requested to Member (Mechanical)/Rly.Bd on 15.01.2013. A part activity has been excluded from turnkey. Civil: Non turnkey portion in progress Mech: M&Ps under non- turn key portion – Out of 31 M&Ps, 11 M&Ps received and rest are under process.
6	ELS/ET - Augmentation of capacity	2007-08	06.08.07	45000	39803	5197	600	39803	0	Work completed.
7	ELS/NKJ - Augmentation of capacity from 100 to 120 locos	2007-08	21.09.07	31533	20674	10859	4525	23706	0	Civil- Work completed. Elect- All M&P items received except 1 no. 15T EOT crane from COFMOW. Crane recd. On 23.04.2012 and commissioned
8	DSL/ET - Augmentation & up gradation of facilities	2007-08	13.08.07	60108	41462	18646	5892	41462	0	Civil: (70%) Work is in progress. Elect: Work is in progress. Mech: Out of 25 M&Ps, 11 M&Ps received & commissioned, 04 items dropped and rest are under procurement. Revised estimate sanction on 04.01.12.
9	JBP- Coaching complex at goods yard (phase-III)	2007-08	04.12.07	175483	129228	46255	28000	142638	0	CIVIL:- Work completed. Elect:-All work completed except electrification of G+1 building. Mech:- All M&Ps received except high

										pressure coach washing machine. EOT cranes 25 Tonne received on 15.04.12 installed on 21.06.12 & under testing.	
10	Satna- Up gradation of yard as 'A' category	2007-08	27.01.09	26466	22209	2257	1671	22209	0	Civil: work completed. Mech: Work completed. Elect: Work completed. Bills Pending.	
11	CRWS/Bhopal- Complete PU painting system for passenger coaches.	2008-09	12.12.08	173002	38353	134649	30000	69777	0	Civil- 91% work completed. Mech- Complete PU painting system PO placed on M/s GLOBAL by COFMOW. Consignment received on 28.02.2013 & under verification. Elect- Tender schedule ready & to be floated soon.	
12	DSL/NKJ- Extension of LSR shed (25m) complete re-roofing by Al sheets and suitable flooring in D/shed	2008-09	14.11.08	67071	27300	39771	6678	33935	0	Civil: 88% work completed. Elect- Work is in progress. Mech:- All M&Ps received & commissioned. Work of industrial flooring & epoxy flooring will be carried out by Engg. deptt.	
13	Kota- Extension of freight sick line and up-gradation from D to A category	2008-09	18.08.08	46715	32900	13815	157	32900	0	Civil & Elect:- Work completed. Mech: All M&Ps received & commissioned except 02 EOT cranes- 15 Ton under procurement at COFMOW. Fresh tender OP-2179 opened on 05.11.12 & under TC at COFMOW. .	
14	ELS/NKJ- Augmentation of holding capacity from 120 to 175 locos	2008-09	01.08.08	97913	34311	63602	6845	38038	0	Civil & Electrical contract awarded. OHE infringement & cable infringement to civil work removed. Electrification power supply of shed & OHE modification work completed. Material against 19 indents received & rests are under process.	
15	ELS/TKD- Augmentation of holding capacity from 120 to 175 locos	2008-09	28.07.08	99959	36492	63467	9427	42089	0	Civil : Work is in progress S&T: Work awarded. Material recd. Work is in progress. Electrical:- 80% work completed. TRD work will be done after completion of Civil work.	



16	DSL/ET- Up gradation, development & improvement in the existing facilities at Diesel loco shed.	2009-10	17.03.10	39174	2729	36445	393	2729	0	Due to paucity of fund in other important ongoing works under PH-42 , the work is planned for next year
17	NKJ- Creation of additional capacities for repair of unloadable wagons at new sick line, NKJ.	2009-10	23.12.09	100765	795	99970	2885	2430	0	Due to paucity of fund in other important ongoing works under PH-42 , the work is planned for next year. Civil- Tender under invitation. Mech- M&Ps under procurement.
18	ELS/ET- Augmentation of homing capacity of electric locos to 175	2009-10	08.03.10	160809	18268	142541	40402	42513	0	Civil:- Work is in progress.(31%) Elect:- Tender awarded on 31.05.11. Work is in progress.
19	CRWS/Nishatpura - Replacement of old A.C. sheets by Aluminium sheets at CRWS.	2009-10	16.12.09	26314	19794	6520	4200	24638	0	Work completed.
20	CRWS/BPL:- Additional Infrastructure for Bogie intermediate overhauling	2010-11	17.01.12	116123	2807	113316	1	2807	0	Due to paucity of fund in other important ongoing works under PH-42 , the work deferred for the year 12-13. Now, Dy.CE/C-1 has been informed to pla the construction of proposed wheel shed.
21	JBP- One 20 coach length pit line and stabling line at old loco shed	2010-11	14.07.11	77249	0	77249	29365	17088	0	Civil- 90% work completed. Construction of pit line is completed and further work in progress. Elect-Tender awarded on 11.10.12.& is in progress. Mech- Indents of M&Ps are under preparation.
22	Kota- New washing pit line (24 coach length)	2011-12	28.05.12.	75493	0	75493	4594	0	0	Revised ESP for 26 coach length has been approved on 06.07.12. Civil- Tender opened on 20.11.12. Under TC. Elect. Tender awarded on 11.10.12 &



											is in progress.. Mech- Indents of M&Ps are under preparation.
23	JBP- Sick line at old loco shed (50mx25m)	2011-12	No	39300	0	39300	1	0	0		Work dropped.
24	JBP-CAMETH design 20 coaches length pit line at old loco shed	2012-13	21.11.12	43260	0	43260	500	0	0		Detailed estimate sanctioned on 21.12.2012. Civil – Tender invited & opened on 05.02.2013 & under process. Elec- Tender to be invited.
25	Itarsi-Drop table hydraulic lifting and traversing system and extension of MR bay at AC loco shed.	2012-13	No	32569	0	32569	1	0	0		New work sanctioned in 2012-13. Detailed estimate under preparation.
26	Vidisha- Setting up of factory to manufacture traction alternator and overhaul of AC traction motors of high horse power diesel locomotive.	2012-13	No	600000	0	600000	10000	0	0		New work sanctioned in 2012-13 under allocation-Deposit. Work to be executed by Rly.Bd. on PPP mode.



[Click Here & Upgrade](#)
Expanded Features
Unlimited Pages

PDF
Complete

j syos ckMZ dk i = l a[; k 2007/M(C)/139/9 fnukad 30.04.10. ds vuq kj i hl hMhvks ea fj i kvZ dh xbz dkfpax enka dh fLFkfr

Status of Coaching items reported through PCDO as per Railway Board letter No.

1. xkfMf; ka ea fyuu i zaku **Linen Management in trains:**

A. fMi ks }kjk l pkfyr dk; Hkkj **Workload handled by the depots**

fMi ks Depot	/kqyh gpZ fyuu l s/ka dh vks r n'ud vko'; drk Average daily requirement of washed linen sets	1.1.2010 dks ; kf=d fMi ks ea dgy dk; Hkkj dk ifr'kr % of the total workload with Mechanical dept as on 1.1.2010 (A)	ekg ds var rd ; kf=d foHkkx }kjk vu; foHkkxka l s fy, x, dgy dk; Hkkj % of the total workload taken over by Mechanical Department from other departments up to the end of month (B)	dgy Total (A+B)
JBP	3844	100%	NIL	100.00%
BPL	390	100%	NIL	100.00%
HBJ	1050	37%	63%	100.00%
KTT	528	100%	NIL	100.00%

B. e' khud'r ykM/h dh LFkki uk **Setting up of Mechanised laundries**

fpflgr fMi ks@LFkku Identified Depots / location	D; k foHkkxh; ; k cW ekW/y gS Whether on Departmental or B.O.O.T. model	{kerk ifr fnu Capacity per day	fufonk o i hM/h h dh orZeku fLFkfr Current status of tender & PDC
JBP/ (Rly Premises)	Mechanized laundry at railway premises.	3 Ton (tentative)	Mechanized laundry commissioned on dated 01.06.2012 at railway premises under three years contract.
BPL / (Contractor Premises)	Mechanized laundry at Contractor Premises	2 Ton (tentative)	Presently work is being managed through Mechanized laundry at Contractor Premises. Detailed terms & conditions and statement of deviation from Board's guidelines for setting up Mechanized laundry under BOOT system are under HQ finance concurrence.
KTT/ (Contractor Premises)	Mechanized laundry at Contractor Premises	1 Ton (tentative)	Contract awarded & functioning satisfactorily.

2. **Mechanised Cleaning of coaching rakes and depot premises by professional agencies on Puri pattern:**

<p>dh l a; k Total No. of coaching depots</p>	<p>fMl ks dh l a; k t gk fufonkvka dks vf re : i fn; k tk p pdk gS No of depots where tenders have been finalized</p>	<p>'kSk Balance</p>	<p>fVli .kh] ; fn dkbZ Remarks, if any</p>
<p>03 (JBP,BPL,KTT)</p>	<p>03</p>	<p>00</p>	<p>JBP: Tender awarded to M/s H. S. Services, Jabalpur on 09.05.12 for the period of two years. All the coaches of primary trains (i.e. 150 coaches per day) are covered under this contract. Work started on 27.05.2012.</p> <p>BPL: Tender for new contract awarded to M/s Vishakha Facility management Pvt. Ltd. New Delhi on 11.01.2013 for the period of two years. 115 coaches per day of primary trains and 135 coaches per day of other end trains including cleaning of depot premises and collection & disposal of garbage is included in this contract. Work started on 23.02.2013.</p> <p>KTT: Tender awarded to M/s Dynamic Enterprises, Jaipur on 22.11.2011. Work started. Contract will expire on 21.11.13.</p>

3. **Status of tenders for On-Board Housekeeping Services in trains:**

<p>dh l a S. N.</p>	<p>fpflgr xkfM+ ks %t kMh% dh dhy l a; k Total No. of trains (pairs) identified</p>	<p>xkfM+ ks %t kMh% dh l a; k ftl ds fy, fufonkvka dks vf re : lk fn; k tk p pdk gS No. of trains (pairs) for which tenders have been finalized</p>	<p>'kSk Balance</p>	<p>fVli .kh] ; fn dkbZ Remarks, if any</p>
<p>1. 2. 3. 4. 5. 6. 7.</p>	<p>07 12181/82 Jabalpur - Jaipur Express 11447/48 Shaktipunj Express 12189/90 Mahakoshal Express 11463/64/65/66 Somnath Express 11449/50 JBP-JAT Express 12187/88 Garibrath Express 12059/60 KTT-NZM Janshatabdi</p>	<p>03</p>	<p>04</p>	<p>Existing contract of OBHS for trains at S.N. 1,2 & 3 has been expired. For S.N. 1 to 6, consolidated new tender opened on 02.07.2012, eight offers received. Tender bid finalized. 6 offers found suitable. Tender under</p>

Express			advanced stage of finalization. For S.N.7 tender awarded to M/s Dynamic Enterprises Jaipur on 08.01.2013 for the period of two years. Work is expected to be start by 15.02.2013.
---------	--	--	--

4. Commercial publicity with coach up-gradation and mechanised cleaning:

Identified trains/rakes		Tender finalized up to the end of the month				Remarks
Train no.	No of rakes	Train no.	No of rakes	Contract duration	Annual licensed fee per rake	
1. 11463/64/65/66	4					Trains at S.N. 1, 2 & 3 have been taken over by Commercial department for publicity. Fixation of reserve price for the remaining 02 trains is under process.
2. 12155/56	2					
3. 11449/50	1					
4. 12121/22	1	Nil	Nil	Nil	Nil	
5. 12191/92	2					

5. Clean Train Stations (CTS):

Nominated CTS	Agency executing the contract	DOC and contract period	PDC & status of tender if CTS not commissioned/previous contract has expired
Itarsi	Eureka Forbes	25.08.06 for five years	Existing contract expired on 21.10.2012. Tender for new contract is opened on 14.09.2012, under TC.
Katni	M/s Ultra clean	17.08.2011 for two years.	-

6. Status of pest and rodent control:

Total No. of depots	Depots where contracts are operational	Depots where contracts are not in place & PDC
07	07 JBP & Rewa : Contract valid up to 22.11.2014. BPL, HBJ, BINA &ET: Contract valid up to 14.09.2014.	NIL

KTT : Contract is valid upto 21.09.2015.

7. **Status of Control Discharge Toilet System (CDTS):**

Total No. of coaches with CDTS	No of coaches with one or more CDTS defective	Total no of CDTS units		No of defective units under warranty	Status of warranty claims	PDC for commissioning of defective units
		Functioning	Defective			
3	NIL	12	NIL	Nil	Nil	-

8. **Restoration of longitudinal upper berths in GSCN & GACCN coaches:**

(Which were retrofitted with longitudinal middle berths?)

The work has been completed.

9. **Retro fitment of cushioned seats in unreserved coaches:**

The work has been completed.

10. **Provision of curtains in aisles of AC3-T coaches:**

All AC 3 tier coaches of WCR have been provided with curtains in aisles.

11. **En-route breakage of Truss Bar hangers: -**

Total No. of cases during the month	Break up of cases (ownership basis)		Class of steel Class I ----- Nos. Class III ----- Nos.
	Railway	No. of cases	
00	SWR	00	-
	WCR	00	
	ER	00	
	NCR	00	
	CR	00	
	ECOR	00	
	SC	00	

12. **Punctuality loss cases on C&W account:**

S. N.	Cause	No. of cases during the month		
		Direct	Indirect	
			Coach account	Wagon account
1.	Roller bearing failure / Hot axle	1	0	0
2.	Hanging parts / under gear defects	1	2	0
3.	Brake system defects, wheel flats	1	2	1
4.	Passenger complaints (Watering, pest control etc.)	0	0	0
5.	Train parting / Draw & Buffing gear	0	0	1
6.	Misc. and others	1	0	1
Total		4	3	
Grand Total		7		

13. **Quality of POH coaches:**

(As per MM's DO No. 2009/M (W)/814/35 safety Pt.dt. 22.02.2011.)

Off-POH coaches are being inspected thoroughly on receipt. Amenity deficiencies are noted and these are sent to respective POH workshops in the prescribed feedback form. Representatives are sent to Ajmer to participate in calling in programme meeting in which quality related problems are sorted out.

14. **Cleanliness Drive:**

The cleaning of coaches of through passing trains was carried out at "Clean Train Station, Itarsi, and Katni" as well as at important stations during their scheduled halts. Coaches were cleaned, as per details below:

Division	Station	No. of trains	No. of coaches cleaned
Bhopal	Itarsi (Clean Train Station)	689*	2119
	Bhopal	317	4789
	Habibganj	179	2748
Jabalpur	Katni (Clean Train Station)	154	2664
WCR		1339	12320

*CTS work at ET stopped w.e.f. 21.10.2012.

15. **Passenger opinion for cleanliness of trains:**

WCR is having a system of taking customer feedback about the quality of cleanliness on board. During Feb-2013, detail of customer feedback is as under:-

Division	No of trains	Excellent / very good	Satisfactory / Good	Unsatisfactory / Bad
Bhopal	04	239	61	NIL
Jabalpur	00	00	00	NIL
Kota	00	00	00	NIL
WCR	04	239	61	NIL
Percentage		79.66%	20.34%	0%

dkp , oa o\$uka ds egRoi wkz vkj , l i h dk; ; l dh orZeku fLFkfr
Present status of important RSP works for coaches and wagons
(Ref. :- AM(PU) DO No. 2012/M(C)/140/2 dated 02.04.2012.)

vuyXud &X Annexure-X

dl a S.N.	vkj , l i h dk foj . k Description of RSP	Lohdfr o"z Year of sanction	i hch en l a , oa o"z PB item No.& year	i ejs dks vkfoVr dy l a Total quantity allotted to WCR	Lohdr ykxr Sanctioned cost (`)	dk; ; l LFky Place of execution	fu"i knu dk ek/; e Mode of execution	i xfr dh fLFkfr Progress status(VU)
dkfpæ dk; ; l Coaching Works								
1	Supply, installation commissioning & maintenance of the microprocessor board display system with GPS in coaches.	2009-10	608 of 11-12 709 of 10-11 1031 of 09-10	150	` 1.25 Lakh per coach.	JBP, BPL	Store Contract	As per Board's LN.2007/M (C)/202/2 dated:23.09.2011 procurement stopped, since new specification is under finalization by RDSO.
2	Supply, installation commissioning & maintenance of the microprocessor board display system with GPS in coaches.	2010-11	635 of 11-12 1166 of 10-11	200	` 1.25 Lakh per coach.	JBP, BPL	Store Contract	As per Board's LN.2007/M(C)/202/2 dated:23.09.2011 procurement stopped, since new specification is under finalization by RDSO.
o\$ku dk; ; l Wagon Works								
1.	Upgradation and Rehabilitation of BOXN wagon using IRSM 44 steel @ 12 lakhs	2011-12	776/PD/11-12(884/10-11)	100	` 8,58,59,125	WRS/KTT	Departmentally	Work Completed.
		2012-13	806/12-13(776/PD/11-12,(884/10-11)	350	` 32,60,16842	WRS/KTT	Departmentally	PO issued on 04.02.13 for 350 sets of prefabricated body side/end arrangement with flap

								doors to N.F. forging Horhaw.DP 15.09.13. Work started.
2	Rebuilding of BOXN wagons for CC+8/CC+ 10	2011-12	789/PD/11-12 (1179/10-11)	300	14,05,13,657	WRS/KTT	Departmentally	PO placed on NS Engineering Kolkata for 300 set side wall and end wall DP 30.06.13. Delivery to be commenced from 26.10.12 but no supply received so far.
		2012-13	819/12-13(789/PD/11-12)	200	11,20,05704	WRS/KTT	Departmentally	Tender opened on 20.02.13.
3	Conversion of BOXN to BOXNHAM	2011-12	779/PD/11-12(886/10-11)	400	4,20,24,972	WRS/KTT	Departmentally	PO 30.12.8089.1.41235 issued on 23.10.2012 for set of spring on GB. Spring, dehradun.DP 30.07.13. Spring sets not received.250 sets of spring loaded side bearer assembly received on 19.01.13 from M/s frontier alloys.
		2012-13	808/12-13(778/PD/11-12, 886/10-11)	200	2,10,40,208	WRS/KTT	Departmentally	Revised estimate has been sanctioned on 05.12.2012. Vetted Indents sent to COS for procurement on 13.02.13.
4.	Retrofitment of bogie mounted brake system in air brake wagon @ 2.25 lakhs	2010-11	779/PD/11-12(887/PD/ 10-11)	200	5,10,27,360	WRS/KTT	Departmentally	Tender for BMBS opened on 14.03.2012.50 sets of BMBS received from M/s Knorr Breamse Faridabad against PO 30.11.8027.1.41182 dated 07.05.12 DP-15.03.13
		2012-13	809/12-13 (779/PD/11-12, 887/PD/10-11)	200	450 Lakh	WRS/KTT	Departmentally	Tender due on 02.04.2013.

