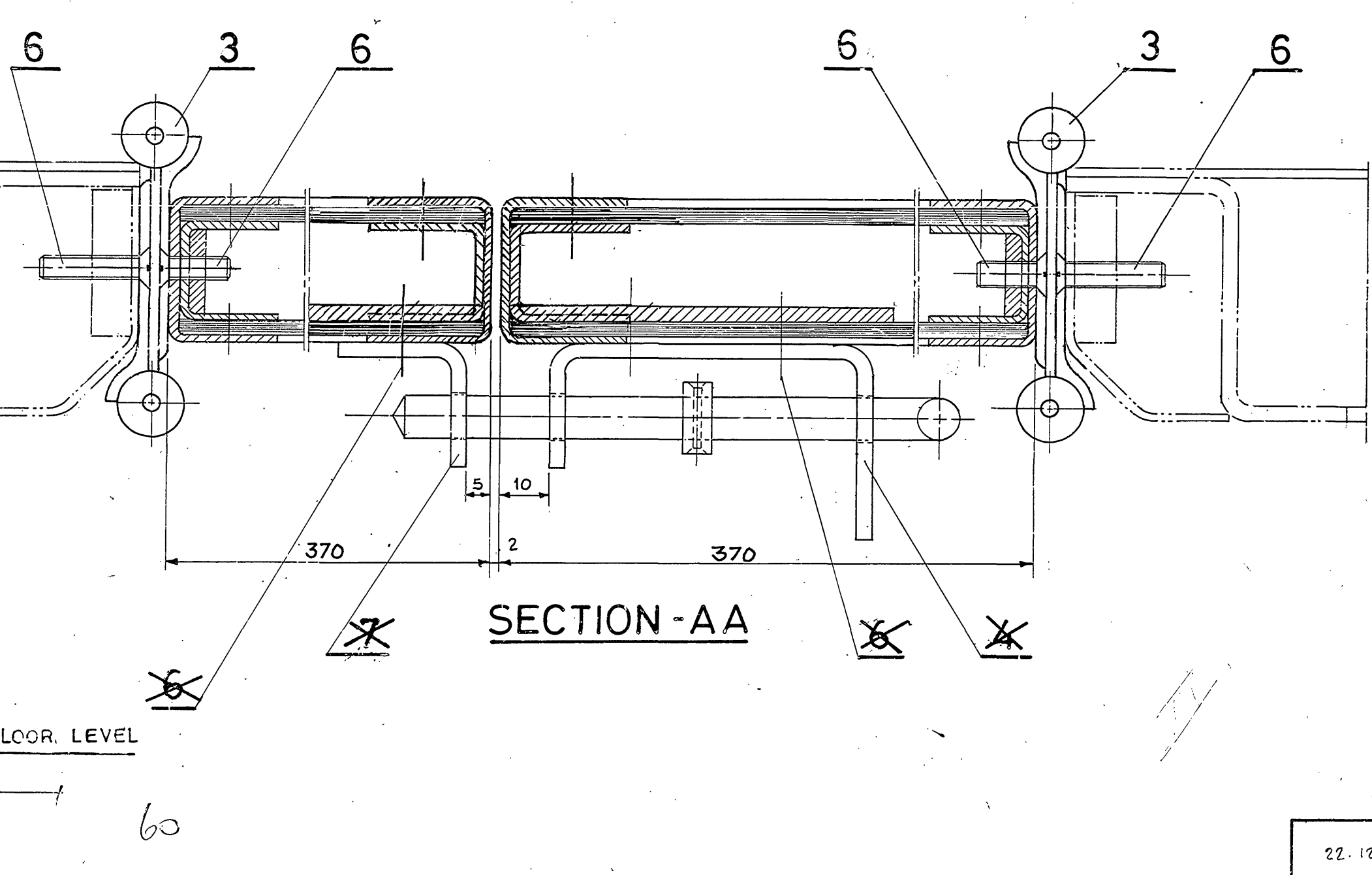
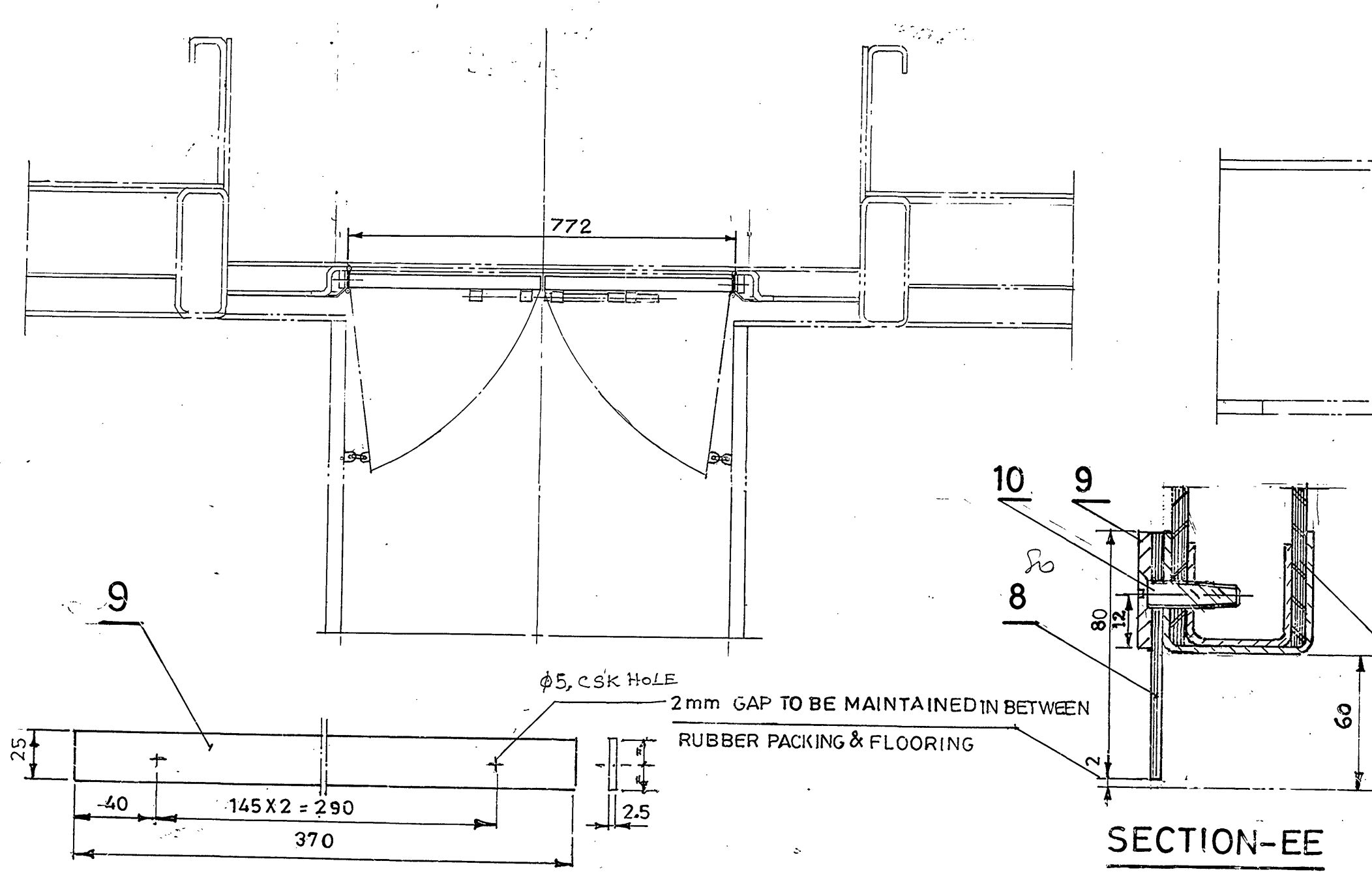
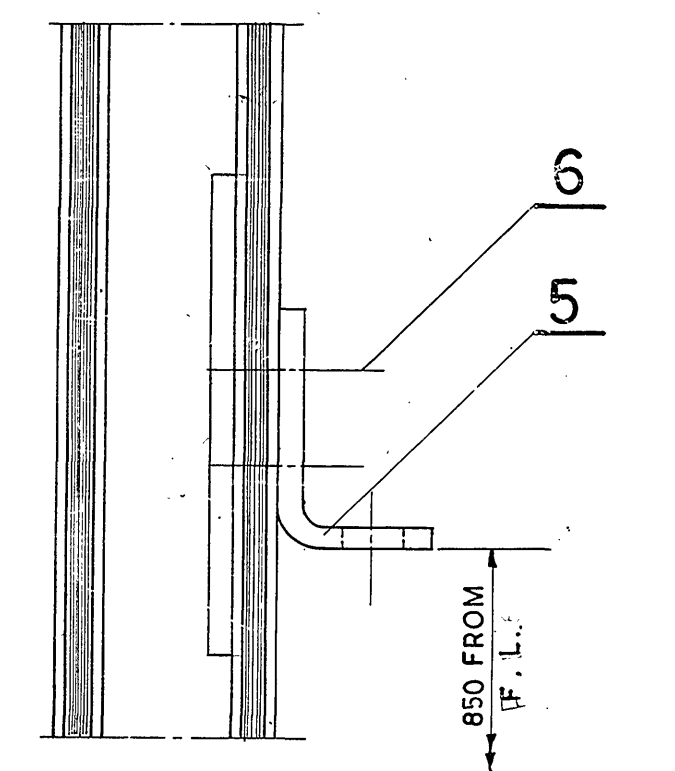
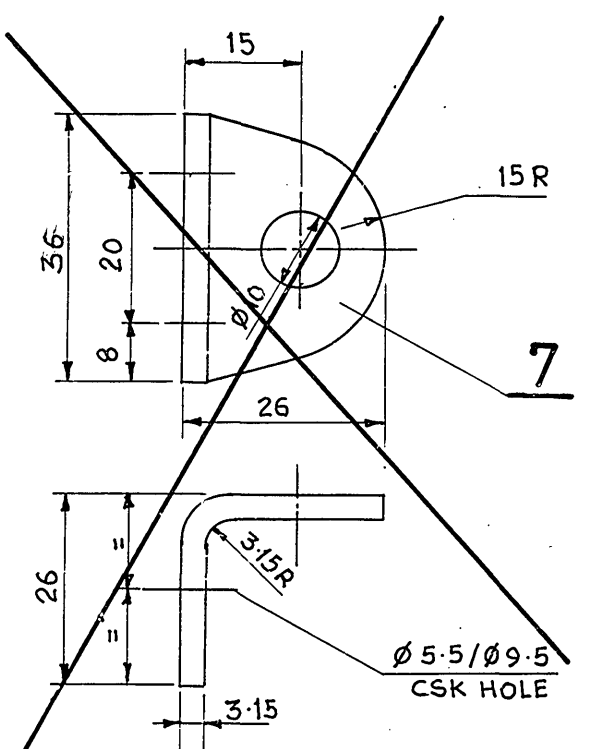
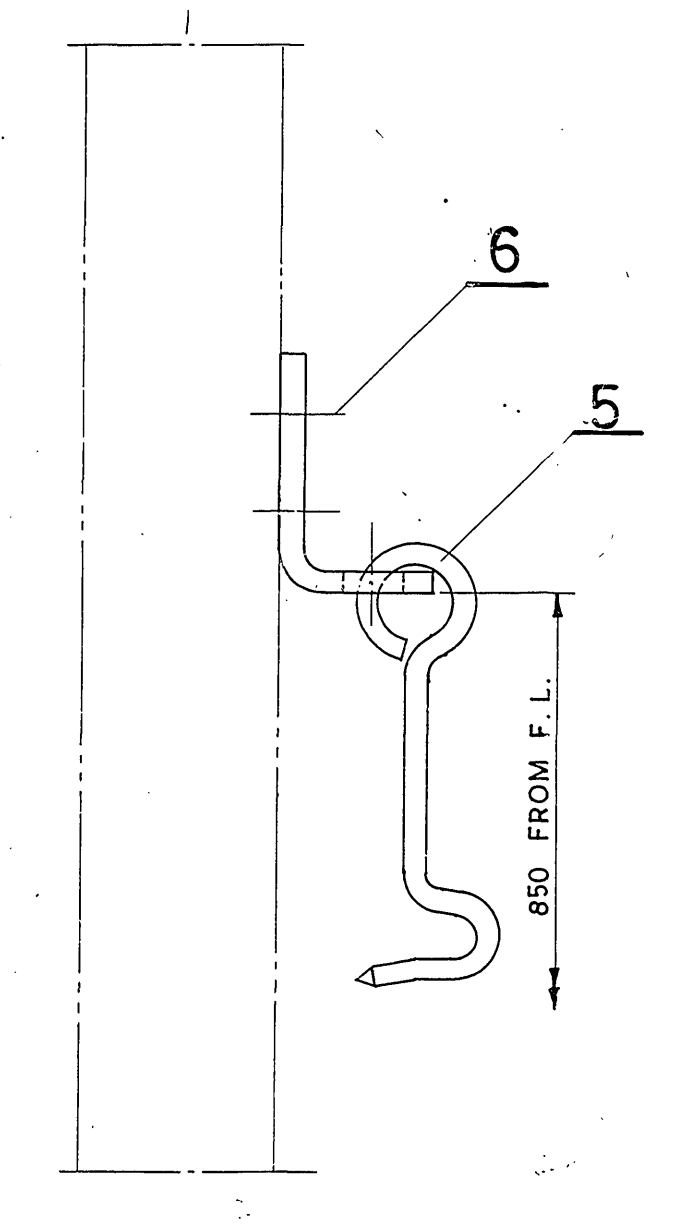
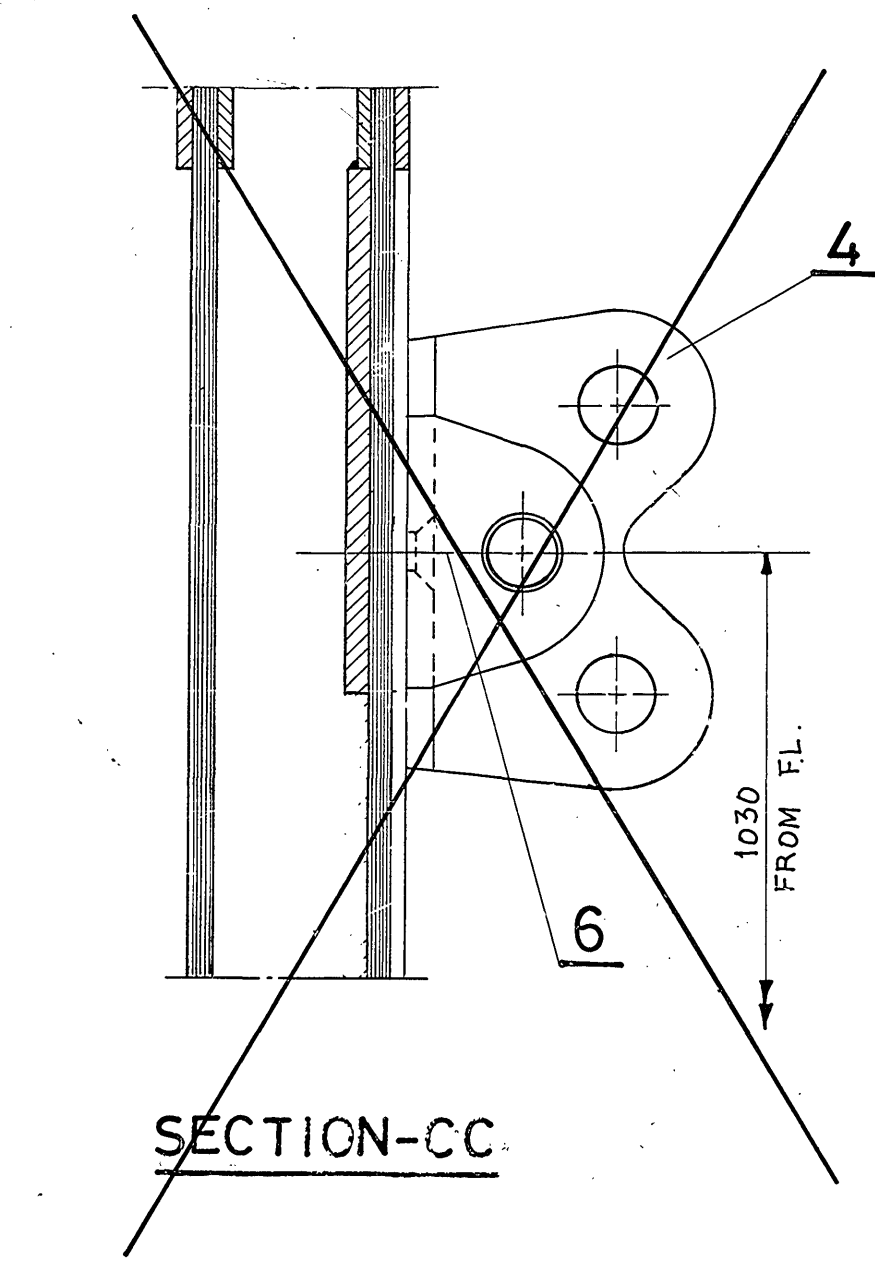
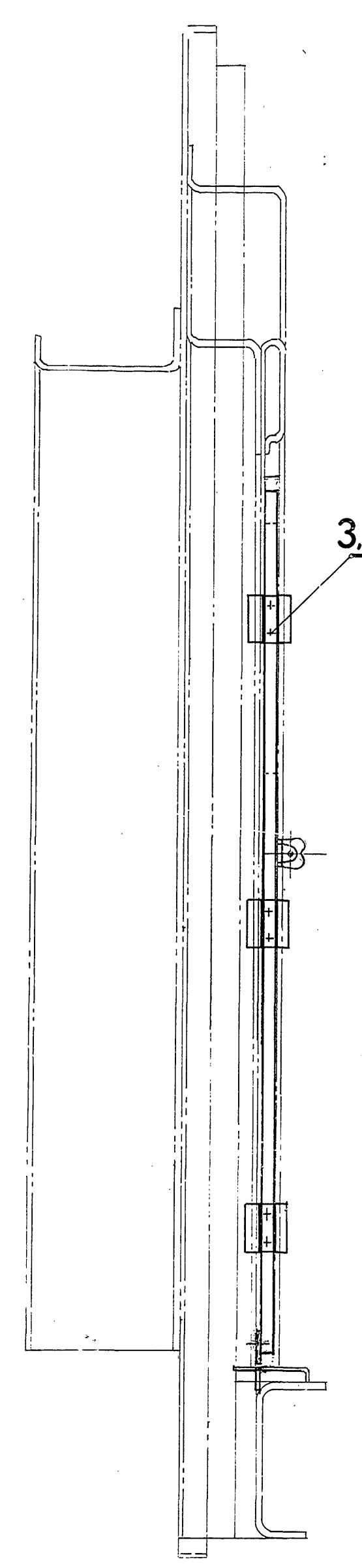
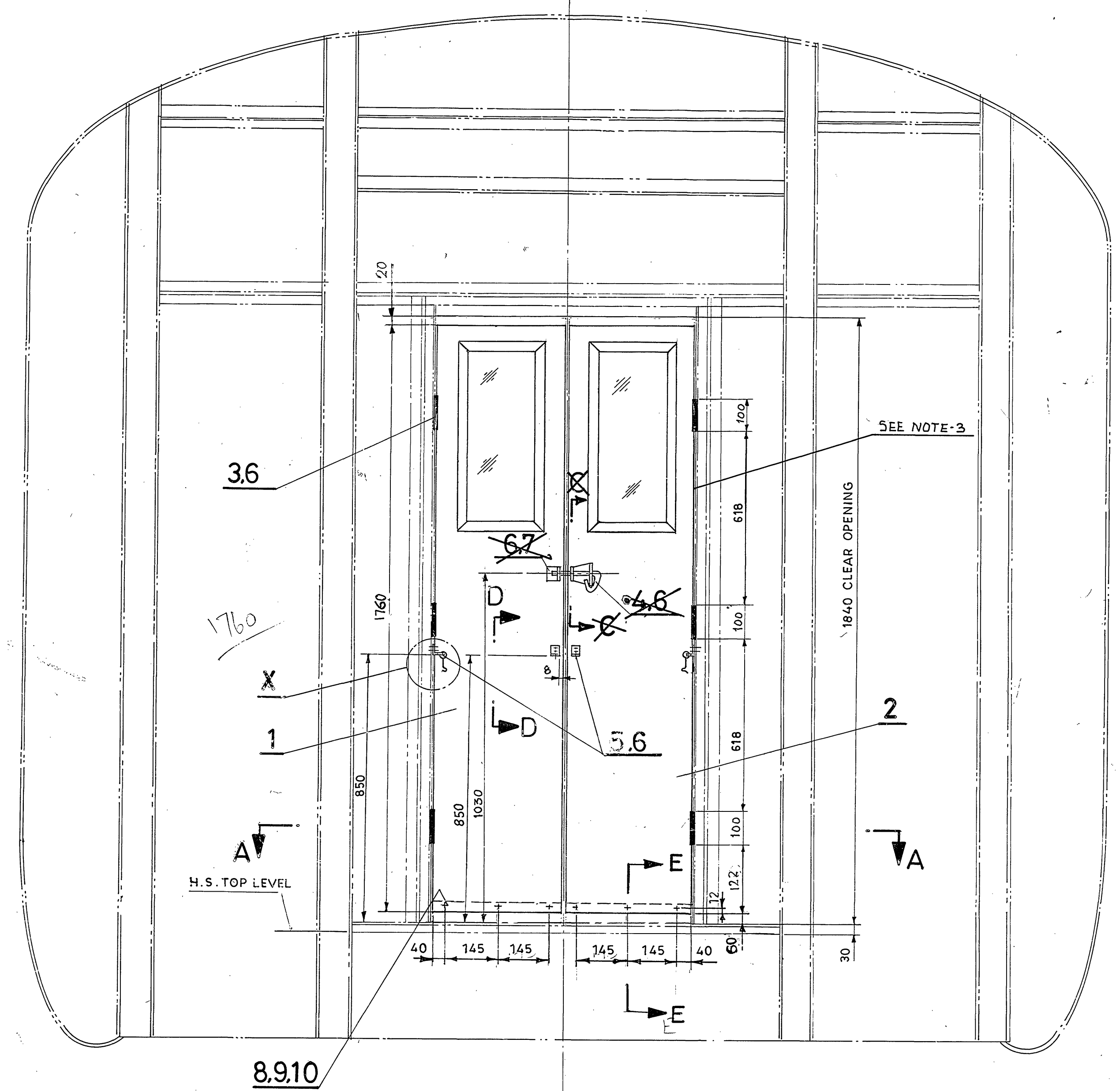


REV	DATE	DESCRIPTION	BY	CHECKED
(f)	12/2002	QTY. FOR WGSWCAC ₇ ADDED IN COL-II WITH ASSY.DRG.NO.WGSWCAC ₇ -9-0-704.	SSE/D	SME/DSD
(c)	5/2002	QTY. FOR WGSZAC ₂ ADDED IN COL-II WITH ASSY.DRG.NO.WGSZAC ₂ -9-0-202.	SSE/D	SME/DSD
(e)	4/2002	QTY. FOR WGSZAC ₂ & WGFAC ₇ ADDED IN COL.II WITH ASSY.DRG.NOS. WGSZAC ₂ -9-0-002 & WGFAC ₇ -9-0-702.	SSE/D	SME/DSD
(2)	5/2000	QTY. FOR WFAc ₅ ADDED WITH ASSY.DRG.NO. WFAc ₅ -9-0-502	SSE/D	SME/DSD

REV	DATE	DESCRIPTION	BY	CHECKED
(1)	3/99	DESCRIPTION LH & RH RESPPLY. FOR ITEMS-1 & 2 DELETED. QTY. FOR ITEM-1 IN COL-II & ITEM-2 IN COL-I DELETED. REMARKS FOR ITEMS 1 & 2 ALTD. FROM COL-I & COL-II TO COL-IX & COL-III RESPPLY.	SSE/D	SME/DSD
(e)	9/2002	ITEMS-8 TO10, NOTE 4 & SECTION-EE ADDED. DOOR HEIGHT DIMENSION ALTD FROM 1836 TO 1790. NOTE-2 DELETED. QTY. FOR ITEM-6 IN COL-I & II ALTD FROM 124 & 24 TO 64 & 128. QTY. FOR WGSZAC ₂ ADDED IN COL-II WITH ASSY.DRG.NO. WGSZAC ₂ -9-0-802	SSE/D	SME/DSD
(b)	02/2000	DRG. REVISED AS PER DETAILS ASSY.DRG.NO. WGSWCAC ₇ -9-0-602 & WGSWCAC ₆ -9-0-602 & NOTE-3 ADDED.	SSE/D	SME/DSD
(4)	01/2004	ITEMS-4, 7, SEC-CC & NOTE-4 DELETED. QTY. FOR ITEM-6 ALTD. FROM 64 & 128 TO 58 & 116 RESPLY.	SSE/D	SME/DSD
(c)	06/2001	LOCATING DIMENSION OF ITEM-3 REVISED.	SSE/D	SME/DSD
(4)	5/2002	MAT. SPEC. UPDATED. QTY. FOR WLRRM ₉ ADDED IN COL.I WITH ASSY.DRG.NO. WLRRM ₉ -9-0-902. QTY. FOR WGSR ₂ & WGSZ ₂ ADDED IN COL-I & II WITH ASSY.DRG.NO. WGSRT ₂ -9-0-202 & WGSZ ₂ -9-0-202 RESPLY.	SSE/D	SME/DSD



⊕ - WGFAc₄, WGSWCAC₆, WGSZAC₂, WGFSCWAC₅, WFAc₅, WGSZAC₂, WGFAC₇, WGSZAC₂, WGSZ₂, WGSZAC₂, WGSWCAC₇
 ▲ - WLRRM₉, WLRRM₉, WGSRT₂

NOTE:
 1. THE DOUBLE ACTING SPRING HINGE (ITEM-3) TO BE MADE OPERATABLE ONLY TOWARDS THE COMPT. SIDE.
 2. ITEM-7 TO BE CHROMIUM PLATED TO SPEC. 15-1360-85 SERVICE GRADE NO. 1 FINI-10-B-CI..
 3. IF ANY CLEARANCES ARE AVAILABLE BETWEEN THE FLAP DOOR AND PILLAR POST. SUITABLE PACKING STRIP TO BE SCREWED IN THE VISIBLE AREA.
 4. ITEM-7 TO BE POWDER COATED TO SPEC. ICF/M/D SPEC-091 WITH MINIMUM THICKNESS OF 50 MICRONS COLOUR SHADE TO MATCH GLOSSY FINISH SMOKE GREY TO SHADE NO-692 OF IS:5-94.

NO.	DESCRIPTION AND DIMENSION	ITEM	REF. DRG.	MAT. SPEC.	REMARKS
12	CSK. HD. TAP SCREW ST 4.8 X 25	10	IS: 7170-85 TY-F	BRIGHT ZINC PLATING	
4	FLAT MOULDING L=370	9		T-4-4-004	
2	RUBBER PACKING 5X80X370	8		NATURAL RUBBER	SHORE HIRDNNESS 50±5
2	ANGLE 3-15x36x46	7		IS: 1073-94 GR-100	*
116	CSK. HD. SCREW M5x20	6	IS: 1365-78 4.8, TAB-18.2		GALVD.
4	HOOK	5	WGFAc ₄ -2-5-403		
2	LOCK ASSEMBLY	4	ICF/SK-3-8-050		COL-II
12	DOUBLE ACTING SPRING HINGE L=160	3	IS: 453-73 FIG-1		
2	FLAP DOOR	2	WGFAc ₄ -2-5-402		COL-III
1	FLAP DOOR	1	WGFAc ₄ -2-5-402		COL-IV

NO. OFF.	DESCRIPTION AND DIMENSION	ITEM	REF. DRG.	MAT. SPEC.	REMARKS
V1 (III) 1	GROUP- INTERIOR EQPTS. AND ACCESSORIES				SUPERSEDED BY: SUPERSEDES: WDCAC-1-5-001. ALT-T/5

22.12.78

DATE: 22.12.78
 BY: CME/D
 SME/D

INDIAN RAILWAY STANDARDS
 028