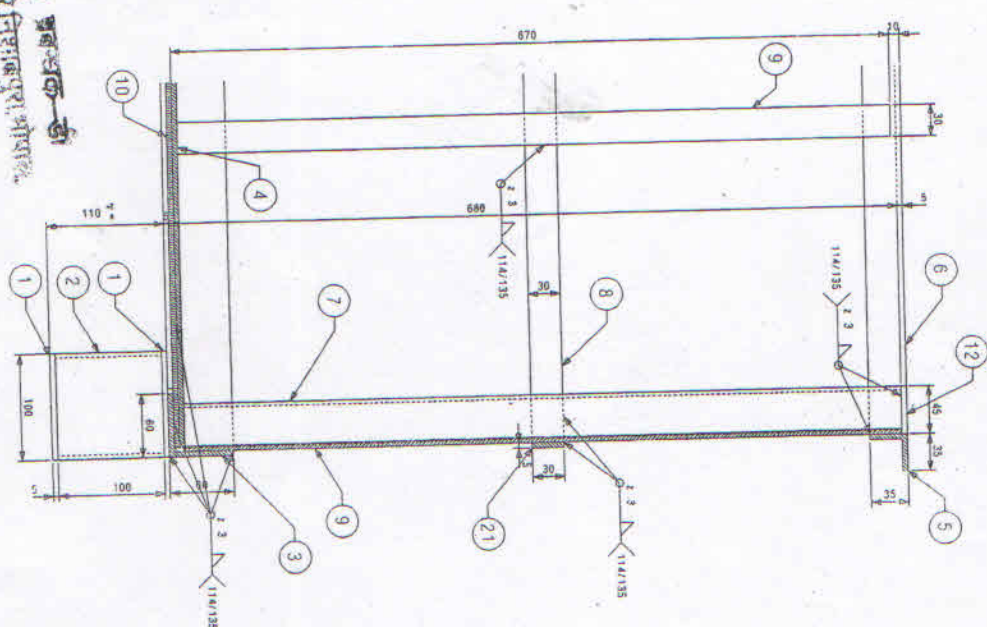
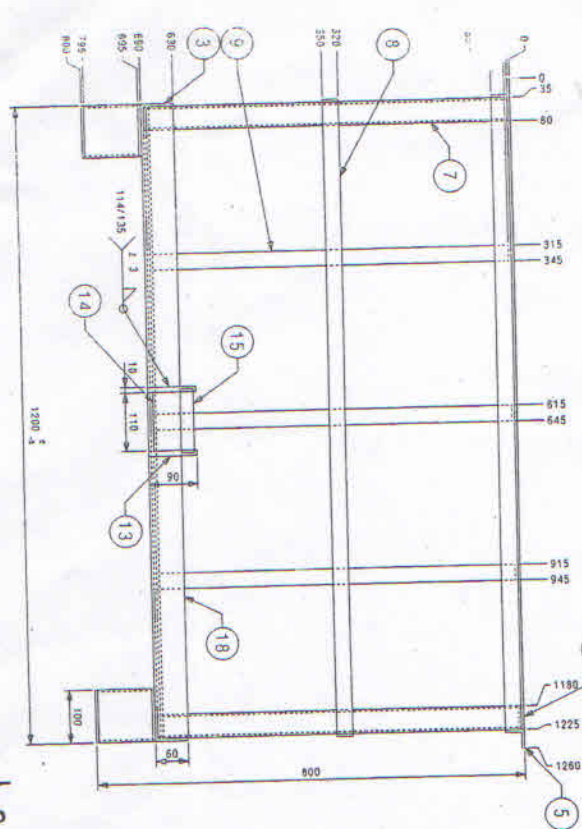
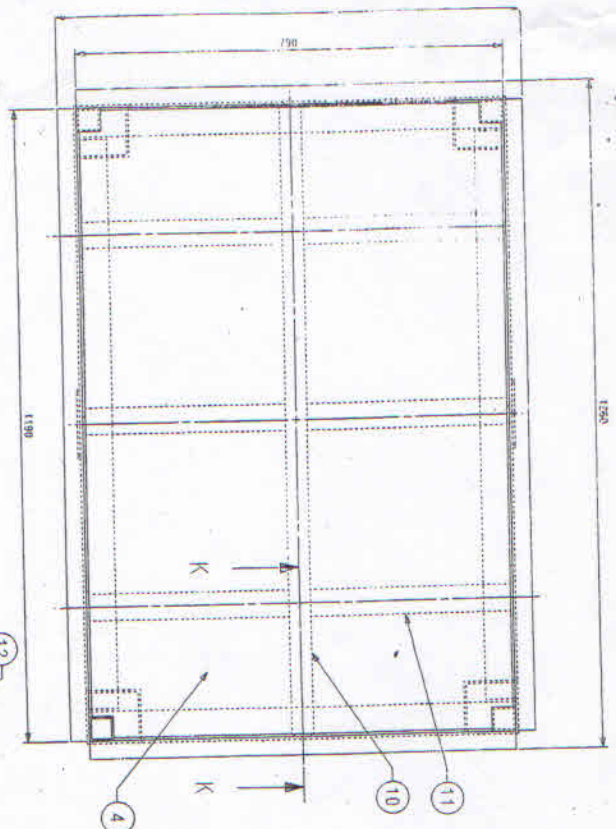


15	16	17	18	19	20	21	22	23	24	25	26	27	28	29	30	31	32	33	34	35	36	37	38	39	40	41	42	43	44	45	46	47	48	49	50	51	52	53	54	55	56	57	58	59	60	61	62	63	64	65	66	67	68	69	70	71	72	73	74	75	76	77	78	79	80	81	82	83	84	85	86	87	88	89	90	91	92	93	94	95	96	97	98	99	100
----	----	----	----	----	----	----	----	----	----	----	----	----	----	----	----	----	----	----	----	----	----	----	----	----	----	----	----	----	----	----	----	----	----	----	----	----	----	----	----	----	----	----	----	----	----	----	----	----	----	----	----	----	----	----	----	----	----	----	----	----	----	----	----	----	----	----	----	----	----	----	----	----	----	----	----	----	----	----	----	----	----	----	----	----	-----



800X1200X800
 BOX PALLET FOR AS/RS
 S.M.M. DIGSDM.C.N.
 23 DEC 2010

ITEM	DESCRIPTION & DIMENSIONS	QTY	UNIT	REF. NO.	REMARKS
1	PLATE 5X100X100	8	MT	SS 304-2006	
2	ANGLE 60X60X6 L=1180	2	MT	SS 304-2006	
3	ANGLE 60X60X6 L=1180	2	MT	SS 304-2006	
4	ANGLE 60X60X6 L=1180	2	MT	SS 304-2006	
5	ANGLE 60X60X6 L=1180	2	MT	SS 304-2006	
6	ANGLE 60X60X6 L=1180	2	MT	SS 304-2006	
7	ANGLE 60X60X6 L=1180	2	MT	SS 304-2006	
8	ANGLE 60X60X6 L=1180	2	MT	SS 304-2006	
9	ANGLE 60X60X6 L=1180	2	MT	SS 304-2006	
10	ANGLE 60X60X6 L=1180	2	MT	SS 304-2006	
11	ANGLE 60X60X6 L=1180	2	MT	SS 304-2006	
12	ANGLE 60X60X6 L=1180	2	MT	SS 304-2006	
13	ANGLE 60X60X6 L=1180	2	MT	SS 304-2006	
14	ANGLE 60X60X6 L=1180	2	MT	SS 304-2006	
15	ANGLE 60X60X6 L=1180	2	MT	SS 304-2006	
16	ANGLE 60X60X6 L=1180	2	MT	SS 304-2006	
17	ANGLE 60X60X6 L=1180	2	MT	SS 304-2006	
18	ANGLE 60X60X6 L=1180	2	MT	SS 304-2006	
19	ANGLE 60X60X6 L=1180	2	MT	SS 304-2006	
20	ANGLE 60X60X6 L=1180	2	MT	SS 304-2006	
21	ANGLE 60X60X6 L=1180	2	MT	SS 304-2006	
22	ANGLE 60X60X6 L=1180	2	MT	SS 304-2006	
23	ANGLE 60X60X6 L=1180	2	MT	SS 304-2006	
24	ANGLE 60X60X6 L=1180	2	MT	SS 304-2006	
25	ANGLE 60X60X6 L=1180	2	MT	SS 304-2006	
26	ANGLE 60X60X6 L=1180	2	MT	SS 304-2006	
27	ANGLE 60X60X6 L=1180	2	MT	SS 304-2006	
28	ANGLE 60X60X6 L=1180	2	MT	SS 304-2006	
29	ANGLE 60X60X6 L=1180	2	MT	SS 304-2006	
30	ANGLE 60X60X6 L=1180	2	MT	SS 304-2006	
31	ANGLE 60X60X6 L=1180	2	MT	SS 304-2006	
32	ANGLE 60X60X6 L=1180	2	MT	SS 304-2006	
33	ANGLE 60X60X6 L=1180	2	MT	SS 304-2006	
34	ANGLE 60X60X6 L=1180	2	MT	SS 304-2006	
35	ANGLE 60X60X6 L=1180	2	MT	SS 304-2006	
36	ANGLE 60X60X6 L=1180	2	MT	SS 304-2006	
37	ANGLE 60X60X6 L=1180	2	MT	SS 304-2006	
38	ANGLE 60X60X6 L=1180	2	MT	SS 304-2006	
39	ANGLE 60X60X6 L=1180	2	MT	SS 304-2006	
40	ANGLE 60X60X6 L=1180	2	MT	SS 304-2006	
41	ANGLE 60X60X6 L=1180	2	MT	SS 304-2006	
42	ANGLE 60X60X6 L=1180	2	MT	SS 304-2006	
43	ANGLE 60X60X6 L=1180	2	MT	SS 304-2006	
44	ANGLE 60X60X6 L=1180	2	MT	SS 304-2006	
45	ANGLE 60X60X6 L=1180	2	MT	SS 304-2006	
46	ANGLE 60X60X6 L=1180	2	MT	SS 304-2006	
47	ANGLE 60X60X6 L=1180	2	MT	SS 304-2006	
48	ANGLE 60X60X6 L=1180	2	MT	SS 304-2006	
49	ANGLE 60X60X6 L=1180	2	MT	SS 304-2006	
50	ANGLE 60X60X6 L=1180	2	MT	SS 304-2006	
51	ANGLE 60X60X6 L=1180	2	MT	SS 304-2006	
52	ANGLE 60X60X6 L=1180	2	MT	SS 304-2006	
53	ANGLE 60X60X6 L=1180	2	MT	SS 304-2006	
54	ANGLE 60X60X6 L=1180	2	MT	SS 304-2006	
55	ANGLE 60X60X6 L=1180	2	MT	SS 304-2006	
56	ANGLE 60X60X6 L=1180	2	MT	SS 304-2006	
57	ANGLE 60X60X6 L=1180	2	MT	SS 304-2006	
58	ANGLE 60X60X6 L=1180	2	MT	SS 304-2006	
59	ANGLE 60X60X6 L=1180	2	MT	SS 304-2006	
60	ANGLE 60X60X6 L=1180	2	MT	SS 304-2006	
61	ANGLE 60X60X6 L=1180	2	MT	SS 304-2006	
62	ANGLE 60X60X6 L=1180	2	MT	SS 304-2006	
63	ANGLE 60X60X6 L=1180	2	MT	SS 304-2006	
64	ANGLE 60X60X6 L=1180	2	MT	SS 304-2006	
65	ANGLE 60X60X6 L=1180	2	MT	SS 304-2006	
66	ANGLE 60X60X6 L=1180	2	MT	SS 304-2006	
67	ANGLE 60X60X6 L=1180	2	MT	SS 304-2006	
68	ANGLE 60X60X6 L=1180	2	MT	SS 304-2006	
69	ANGLE 60X60X6 L=1180	2	MT	SS 304-2006	
70	ANGLE 60X60X6 L=1180	2	MT	SS 304-2006	
71	ANGLE 60X60X6 L=1180	2	MT	SS 304-2006	
72	ANGLE 60X60X6 L=1180	2	MT	SS 304-2006	
73	ANGLE 60X60X6 L=1180	2	MT	SS 304-2006	
74	ANGLE 60X60X6 L=1180	2	MT	SS 304-2006	
75	ANGLE 60X60X6 L=1180	2	MT	SS 304-2006	
76	ANGLE 60X60X6 L=1180	2	MT	SS 304-2006	
77	ANGLE 60X60X6 L=1180	2	MT	SS 304-2006	
78	ANGLE 60X60X6 L=1180	2	MT	SS 304-2006	
79	ANGLE 60X60X6 L=1180	2	MT	SS 304-2006	
80	ANGLE 60X60X6 L=1180	2	MT	SS 304-2006	
81	ANGLE 60X60X6 L=1180	2	MT	SS 304-2006	
82	ANGLE 60X60X6 L=1180	2	MT	SS 304-2006	
83	ANGLE 60X60X6 L=1180	2	MT	SS 304-2006	
84	ANGLE 60X60X6 L=1180	2	MT	SS 304-2006	
85	ANGLE 60X60X6 L=1180	2	MT	SS 304-2006	
86	ANGLE 60X60X6 L=1180	2	MT	SS 304-2006	
87	ANGLE 60X60X6 L=1180	2	MT	SS 304-2006	
88	ANGLE 60X60X6 L=1180	2	MT	SS 304-2006	
89	ANGLE 60X60X6 L=1180	2	MT	SS 304-2006	
90	ANGLE 60X60X6 L=1180	2	MT	SS 304-2006	
91	ANGLE 60X60X6 L=1180	2	MT	SS 304-2006	
92	ANGLE 60X60X6 L=1180	2	MT	SS 304-2006	
93	ANGLE 60X60X6 L=1180	2	MT	SS 304-2006	
94	ANGLE 60X60X6 L=1180	2	MT	SS 304-2006	
95	ANGLE 60X60X6 L=1180	2	MT	SS 304-2006	
96	ANGLE 60X60X6 L=1180	2	MT	SS 304-2006	
97	ANGLE 60X60X6 L=1180	2	MT	SS 304-2006	
98	ANGLE 60X60X6 L=1180	2	MT	SS 304-2006	
99	ANGLE 60X60X6 L=1180	2	MT	SS 304-2006	
100	ANGLE 60X60X6 L=1180	2	MT	SS 304-2006	

MANUAL ALTERATION SHALL AUTOMATICALLY RENDER THIS DRAWING INVALID.
 UNTOLEERANCED DIMENSIONS REFER H000000
 DATE OF FIRST ISSUE: 10/08/2010
 COM BY: [Signature]
 23 DEC 2010
 800X1200X800
 BOX PALLET FOR AS/RS
 S.M.M. DIGSDM.C.N.
 800X1200X800
 BOX PALLET FOR AS/RS
 PL NO. N.A.
 DRG. NO. XA003601