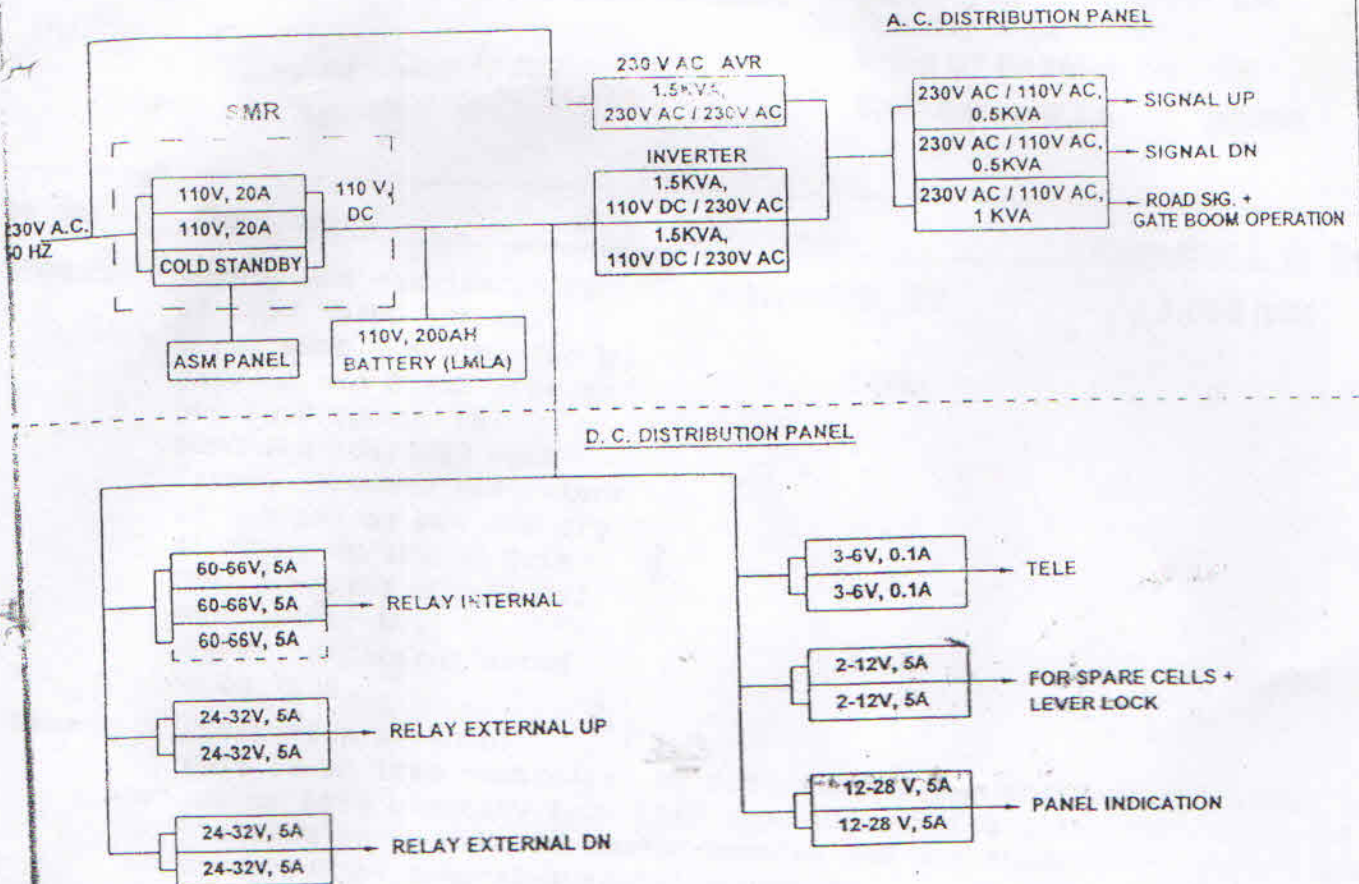


IPS FOR LEVEL CROSSING FOR RE/ NON-RE

557 (19)



- NOTES:-
 APPROXIMATE CABLE DISTANCE BETWEEN IPS ROOM & ASM PANEL (GATE HUT) 65 MTRS.
 APPROXIMATE CABLE DISTANCE BETWEEN IPS ROOM & BATTERY BANK 10 MTRS
 SCOPE OF SUPPLY, INSTALLATION & COMMISSIONING SHALL BE AS PER RDSO LETTER NO. TS/E/IPS/GEN. DT: 03.04.08.
 LOAD DISTRIBUTIONS FOR SIGNAL LIGHTING CAN BE SUITABLY CHANGED AT SITE TO MEET SITE REQUIREMENTS.

Anoop Singh Yadav
 Anoop Singh Yadav
 वरि. सामग्री प्रबंधक/बिक्री
 Sr. Materials Manager/S
 पश्चिम मध्य रेल/जयलपुर
 West Central Railway, JBP.

WEST CENTRAL RAILWAY			
SIGNAL & TELECOMMUNICATIONS			
IPS FOR L. C. GATE FOR RE / NON RE AREA			
DRG. NO. WCR/N-HQ/IPS/LC GATE/08/03/A/1 1			
DRAWN BY <i>[Signature]</i> SE(D)	CHECKED BY <i>[Signature]</i> ESTE/STS	CHECKED BY <i>[Signature]</i> Dy.C.S.T.E.(P & D)	APPROVED BY DT: <i>[Signature]</i> C.S.T.E. / Prof.