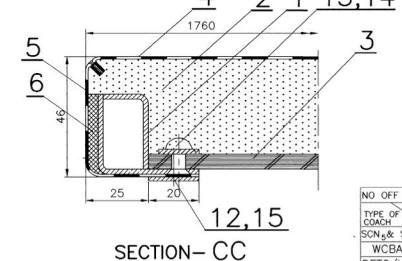
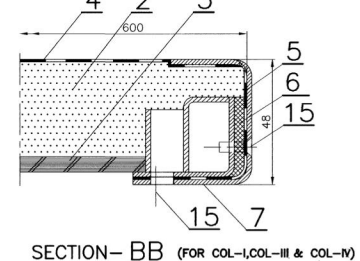
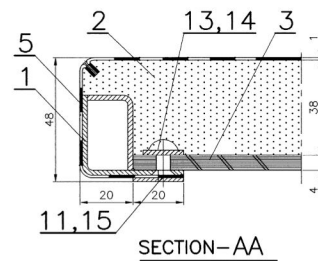
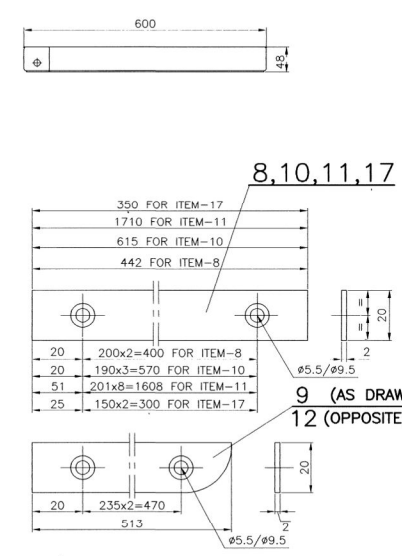
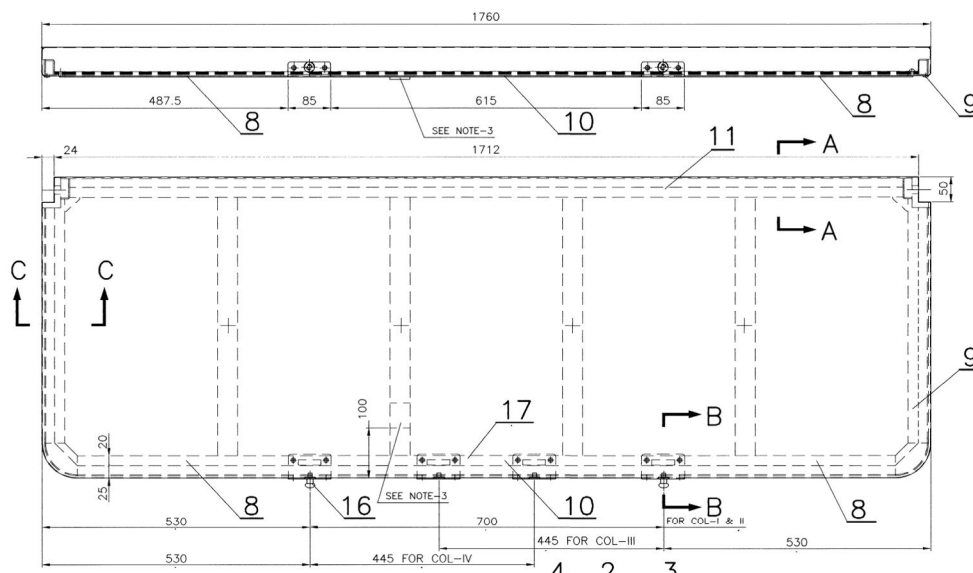


SCN5-6-1-504

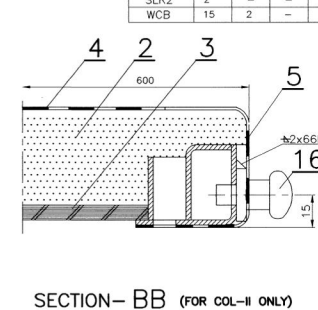
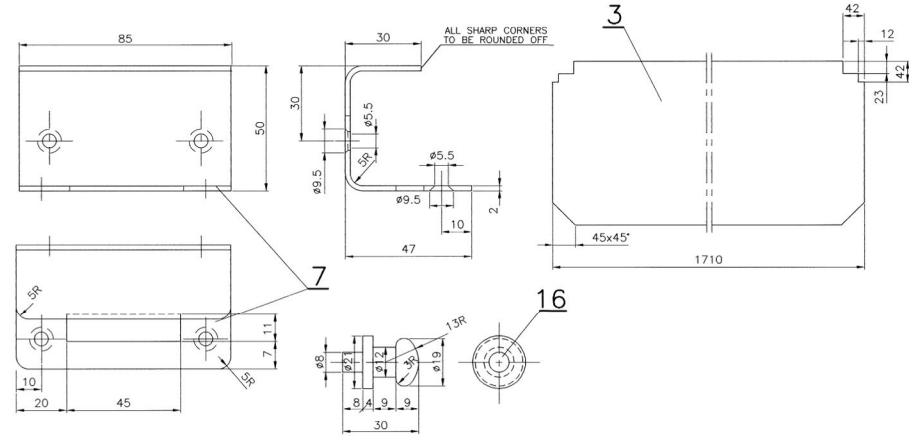
② 7/2000	▽ ROUGH MACHINED	③ ROUGH CLEANING	ALTERATIONS
QTY. FOR WCBAC ADDED IN COL-I&II WITH ASSY. DRG. No. WCBAC -6-1-601	▽▽ FINISH MACHINED		⑦ 7/2002
sd/- sd/- SD SME/DSD	▽▽▽ FINE FINISH MACHINED		DRAWING REVISED AND REDRAWN.
			sd/- sd/- SSE/D SME/DSD
			⑧ 03/2003
			ITEM-16,COL-III & IV AND SECTION-BB FOR COL-II ADDED. QTY. FOR WCBAC ADDED WITH ASSY. DRG.NO.WCB6-6-1-601.
			sd/- sd/- SSE/D SME/DSD
			⑩ 10/2003
			ITEM-17,COL-III & IV AND NOTE-6 ADDED. QTY. FOR SCN IN COL-I ALTD FROM 45 TO 43 IN TAB. FORM.
			SSE/D SME/DSD

नोट:

- पर सं 2 और 3 के लिए उपयुक्त स्थान पर हवा लक्ष में काटे कि वह खेन के लिए उपयुक्त हो सके
- SUITABLE CUTAWAY TO BE DONE AT SITE FOR ITEMS-2,8,3 TO SUIT THE FRAME.
- अनुमोदित बॉर्ड के एप्लीकेशन से पर 2 विकसन को साठ रूप पर विपक्ष्य जाना चाहिए औ 3 से
- REXINE (ITEM-5) SHALL BE PASTED TO THE SEAT FRAME WITH APPROVED BRAND OF ADHESIVE.
- विनिर्देश का नाम औ विनिर्देश करने की तारीख को दर्शाना नाम चूट का अकार 25 50 से अधिक नहीं होना चाहिए औ इसे जलरोधी एप्लीकेशन से विपक्ष्य चू किया जाना चाहिए
- METALLIC NAME PLATE OF THE MANUFACTURER WITH MONTH & YEAR OF MANUFACTURE OF SIZE NOT MORE THAN 25x50mm SHALL BE GULED WITH WATER PROOF ADHESIVE AND SCREWED AS SHOWN IN THE DRG. पर सं 8 9 10 11 व 12 को 1/4 ऑकनाइड निक कोट प्रदान द्वारा रंगा जाना चाहिए विरि सं 207402 तथा इन्फाल पेट का सुरा कोट येलो फिनिश स्टेक से से किया जाना चाहिए आईएस स 5 94 का सेट सं 602
- ITEMS-8,9,10,11 & 12 SHALL BE PAINTED WITH RED OXIDE ZINC CHROMATE PRIMER TO SPEC. 2074-92 AND SECOND COAT OF ENAMEL PAINT OF GLOSSY FINISH SMOKE GRAY TO SHADE NO.692 OF IS-5-94.
- ITEM-7 SHALL BE WELDED TO THE BERTH FRAME TO DRG. NO SCN5-6-1-509 BEFORE TRIMMING.
- ITEM-7 TO BE RELOCATED FOR COLS-III & IV AS PER DRG. AND SUITABLE HOLES TO BE DRILLED AT SITE TO SUIT SUSPENSION CHAIN BRACKET IN BERTH FRAME TO DRG. NO. SCN5-6-1-505 BEFORE TRIMMING.



TYPE OF COACH	COL-I	COL-II	COL-III	COL-IV
SCN5 & SCN6	43	-	1	1
WCBAC6	15	-	-	-
DETC/US	3	-	-	-
SLR2	2	-	-	-
WCB	15	2	-	-



NO	OFF	DESCRIPTION AND DIMENSION	ITEM	REF.DRG.	MAT.&SPEC.	REMARKS
1	1	FLAT MOULDING	2x20x350	17	IS:513-94 Gr-0-SK	
2	2	PIN	ø21x30	16	IS:2062-99 Fe 410 WA	\$
3	3	RSD CSK HD TAP SCREW	B8x13	15	IS:7169-89	BRIGHT ZINC PLATING
4	4	CSK HD RIVET	ø5x16	14	IS:2907-64 TAB-3,FC-5 19000	FROM ø5x20
5	5	PLAIN WASHER	5.5	13	IS:737-86 19000	
6	6	FLAT MOULDING	2x20x513	12	IS:513-94 Gr-0-SK	
7	7	FLAT MOULDING	2x20x1710	11	IS:513-94 Gr-0-SK	
8	8	FLAT MOULDING	2x20x615	10	IS:513-94 Gr-0-SK	
9	9	FLAT MOULDING	2x20x513	9	IS:513-94 Gr-0-SK	
10	10	FLAT MOULDING	2x20x442	8	IS:513-94 Gr-0-SK	
11	11	CHANNEL	2X85X119	7	IS:513-94 Gr-0-SK	
12	12	FELT	6x30x3000	6	IS:1719-88 TAB-8	MEDIUM
13	13	REXINE	1x150x4900	5	RDS0/SPEC C-9503,TY-II	
14	14	REXINE	1x650x1850	4	RDS0/SPEC C-9503,TY-II	
15	15	COMPREG PLYWOOD	4x554x1710	3	RDS0/SPEC C-9407,TY-II	
16	16	FOAM RUBBER	6-1-510	2	SCN6	ITEM-2
17	17	BERTH FRAME	6-1-510	1	SCN6	COL-I

GROUP: 6-1 SEATS AND BERTHS	SUPERSEDED BY:
WCB6-6-1-601	SCALE: SSE/D
DETC/US 6-1-001	1:5
SLR2 6-1-201	1:1
WCBAC6-6-1-601	DRN
SCN6-6-1-501	CAD
	GUNDESSARANY
ASSEMBLY DRAWINGS	ALT
CAD FILE: C:\MD-CAD\171\6-1\504-SP02.DWG	INTERNAL COACH FACTORY
DATE OF LATEST ALT: 9-10-03	CHENNAI - 38.
DATE OF FIRST ISSUE: 13-03-03	
DY.CME/D	
SME/DSD	
INDIAN RAILWAY STANDARDS	SHEET 1 OF 1
171	SCN5-6-1-504