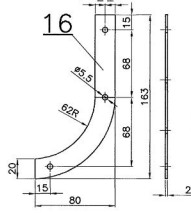
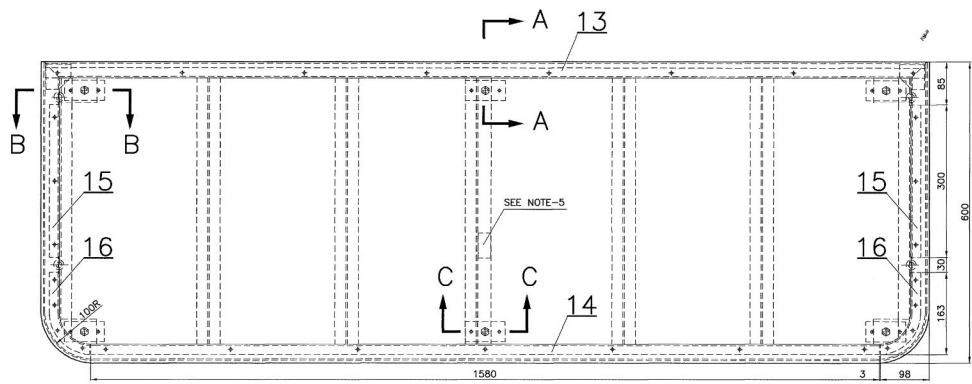
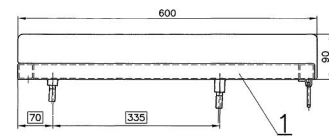
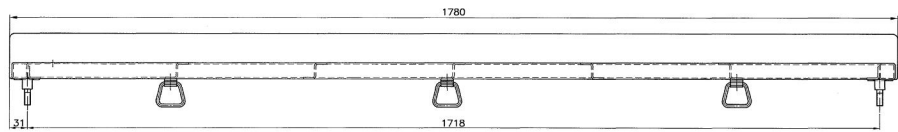


SCN₆-6-1-602

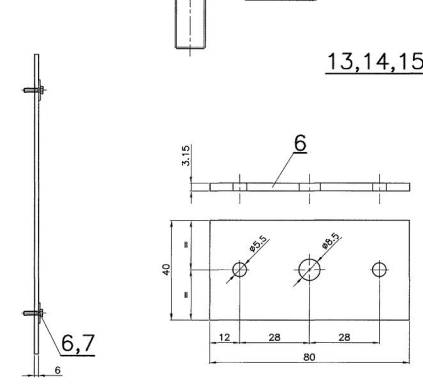
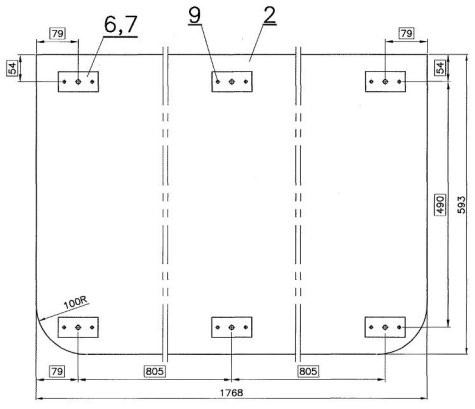
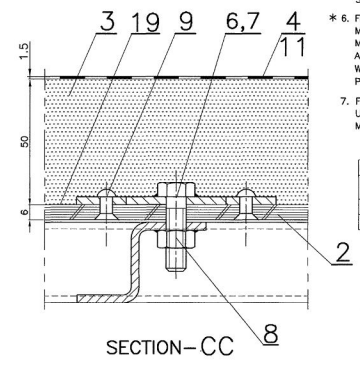
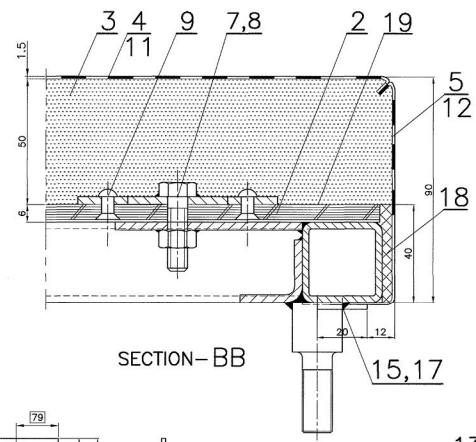
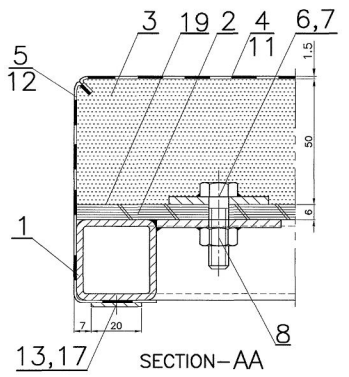
▽	ROUGH MACHINED	①	ROUGH CLEANING	ALTERATIONS
▽▽	FINISH MACHINED			① 01/2006
▽▽▽	FINE FINISH MACHINED			THICKNESS OF ITEMS-4&5 ALTD. FROM 1 TO 1.5. DRG. ALTD ACCRDLY.
				sd/- SSE/D
				sd/- SME/DSD
				② 09/2006
				NOTE-7 ADDED.
				SK/mt SSE/D SME/DSD



NOTE:

- SUITABLE HOLES SHALL BE DRILLED AT SITE TO ITEM-2 TO SUIT ITEMS-7&9.
- REXINE(ITEM-5) SHALL BE PASTED TO SEAT FRAME WITH APPROVED BRAND OF ADHESIVE.
- ITEMS-6&7 SHALL BE WELDED TOGETHER.
- ITEMS-8 TO BE TACK WELDED TO THE SEAT FRAME AFTER ASSEMBLING.
- METALLIC NAME PLATE OF THE MANUFACTURER WITH YEAR OF MANUFACTURE TO SIZE NOT MORE THAN 25x50mm SHALL BE GLED WITH WATER PROOF ADHESIVE AND SCREWED AT LOCATIONS SHOWN IN THE DRG.
- FIBREGLASS WOVEN CLOTH AS PER IS:13128(PART-1)1991 HAVING MINIMUM DENSITY OF 206.5gm/sq.m OR ALTERNATE FABRIC MADE OUT OF FLAME RESISTANT FIBRE SHALL BE PROVIDED ALL AROUND PU FOAM DULY SEWN NEATLY WITHOUT ANY WRINKLES INCLUDING BETWEEN UPHOLSTERY AND COMPREG PLYWOOD AS A FIRE PREVENTION MEASURE.
- FIBRE GLASS WOVEN CLOTH NEED NOT BE PROVIDED WHILE USING DENSIFIED THERMAL BONDED BLOCKS AS CUSHIONING MATERIAL.

NO OF ASSEMBLES REQUIRED PER COACH	
TYPE OF COACH	COL-1
SCN ₆	1B



300 FOR ITEM-15	
1580 FOR ITEM-14	
1775 FOR ITEM-13	
30 245x7=1715 FOR ITEM-13	
25 255x6=1530 FOR ITEM-14	
25 125x2=250 FOR ITEM-15	

NO	DESCRIPTION AND DIMENSIONS	ITEM	REF.DRG	MATL.&SPEC.	WEIGHT/UNIT	REMARKS
1	FIBREGLASS WOVEN CLOTH 593x1768	19				*
1	FELT 6x40x2900	18		IS:1719-88 TAB-1		MEDIUM
27	PAN HD TAP SCREW ST 4.2x13-F	17		IS:7173-89		BRIGHT ZINC PLATING
2	FLAT MOULDING 2x80x163	16				
2	FLAT MOULDING 2x20x300	15				
1	FLAT MOULDING 2x20x1580	14		IS:513-94 Gr-O-SK		
1	FLAT MOULDING 2x20x1775	13				
1	FIBREGLASS WOVEN CLOTH 175x4800	12				*
1	FIBREGLASS WOVEN CLOTH 650x1850	11				*
10	CHT LATH NAIL 1.5x15	10		IS:6734-72 TAB-1		
12	CSK HD RIVET #5x18	9		IS:740-77 19000		
6	HEX. NUT M8-4	8				GALVD.
6	HEX. HD. SCREW M8x25	7		IS:1383(PWT-2) 92.4.6.1e-1		GALVD.
6	FIXING PLATE 3.15x40x80	6				
1	REXINE 1.5x175x4800	5		IS:1079-94 Gr.O.SK RDSO/SPEC. C-9503.TY-II		
1	REXINE 1.5x650x1850	4		RDSO/SPEC. C-9503.TY-II		
1	PU FOAM	3		SCN ₆ 6-1-610		ITEM-1
1	COMPREG PLYWOOD 6x393x1768	2		RDSO/SPEC. C.9407-TY-1		
1	SEAT FRAME	1		SCN ₆ 6-1-603		COL-1

NO.OFF. DESCRIPTION AND DIMENSIONS. ITEM. REF.DRG. MATL.&SPEC. WEIGHT/UNIT. REMARKS.

GROUP: 6-1 SEATS & BERTHS

PER ASSY.

SCN₆-6-1-601

ASSEMBLY DRAWING

CAD FILE: C:\MD-CAD\201\6-1\602-S600.DWG

DATE CODE NO: 17-09-2006

INDIAN RAILWAY STANDARDS

SHEET 1 OF 1

INTERNAL COACH FACTORY CHEMUN-38

SCN₆-6-1-602