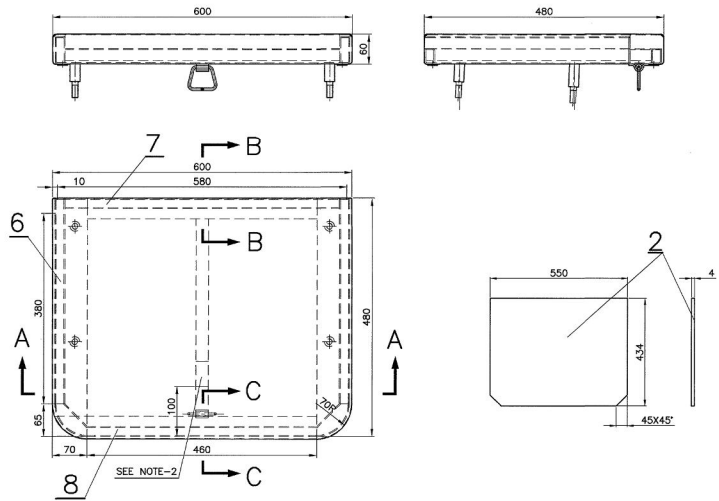


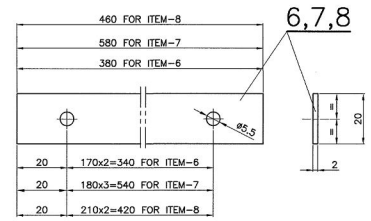
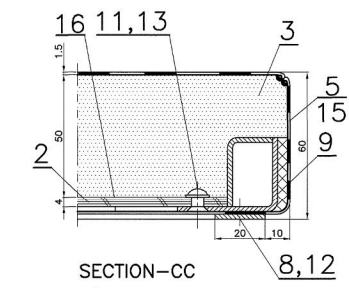
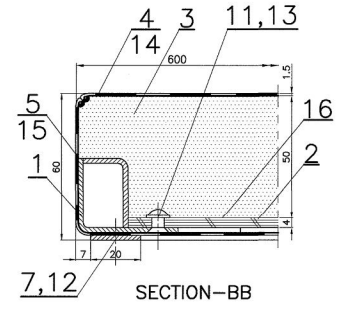
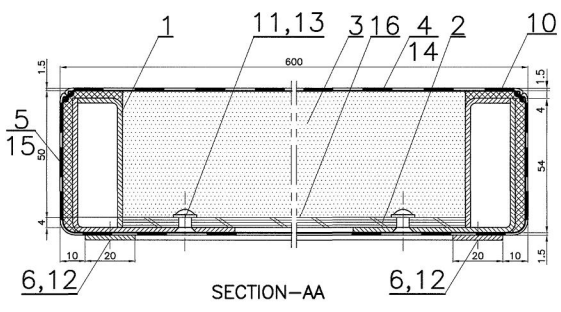
SCN<sub>6</sub>-6-1-608

▽	ROUGH MACHINED	①	ROUGH CLEANING	ALTERATIONS
∇	FINISH MACHINED			06/2005
∇∇	FINE FINISH MACHINED			ITEM-16 ADDED. NOTE-4 REVISED. DRG. ALTD ACCORDLY.
				sd/- sd/- SSE/D SME/DSD
				10/2005
				NOTE-4 REVISED.
				sd/- sd/- SSE/D SME/DSD
				01/2006
				THICKNESS OF ITEM- 4&5 ALTD. FROM 1 TO 1.5. DRG. ALTD ACCORDLY.
				sd/- sd/- SSE/D SME/DSD
				09/2006
				NOTE-5 ADDED.
				sd/- sd/- SSE/D SME/DSD



**NOTE:**

- REXINE (ITEM-5) SHALL BE PASTED TO THE SEAT FRAME WITH APPROVED BRAND OF ADHESIVE.
- METALLIC NAME PLATE OF THE MANUFACTURER WITH MONTH & YEAR OF MANUFACTURE OF SIZE NOT MORE THAN 25x50mm SHALL BE GLUED WITH WATER PROOF ADHESIVE AND SCREWED AS SHOWN IN THE DRG.
- ITEMS-6,7,8 SHALL BE PAINTED WITH RED OXIDE ZINC CHROMATE PRIMER TO SPEC. 2074-92 AND SECOND COAT OF ENAMEL PAINT OF GLOSSY FINISH SMOKE GRAY TO SHADE NO.692 OF IS5-94.
- FIBREGLASS WOVEN CLOTH AS PER IS:13128(PART-1)1991 HAVING MINIMUM DENSITY OF 206.5gm/sqm OR ALTERNATE FABRIC MADE OUT OF FLAME RESISTANT FIBRE SHALL BE PROVIDED ALL AROUND PU FOAM DULY SEWN NEATLY WITHOUT ANY WRINKLES INCLUDING BETWEEN UPHOLSTERY AND COMPREG PLYWOOD AS A FIRE PREVENTION MEASURE.
- FIBRE GLASS WOVEN CLOTH NEED NOT BE PROVIDED WHILE USING DENSIFIED THERMAL BONDED BLOCKS AS CUSHIONING MATERIAL.



NO OFF ASSY <sub>6</sub> RECD. PER COACH	
TYPE OF COACH	COL-I
SCN <sub>6</sub>	18

NO OFF	DESCRIPTION AND DIMENSIONS	ITEM	REF.DRG	MATL.&SPEC.	WEIGHT/UNIT	REMARKS
1	FIBREGLASS WOVEN CLOTH	434x550				*
1	FIBREGLASS WOVEN CLOTH	125x2200				*
1	FIBREGLASS WOVEN CLOTH	550x650				*
1	PLAIN WASHER	5.5	IS:2016-67 T-2,TY-4	IS:737-86 19000		
1	PAN HD TAP SCREW	ST 4.2x13-F				BRIGHT ZINC PLATING
2	CSK HD RIVET	ø5x16		IS:2907-64 19000		
2	FELT	6x75x410		IS:1719-88 TAB-I		MEDIUM
1	FELT	6x30x675		IS:1719-88 TAB-I		MEDIUM
1	FLAT MOULDING	2x20x460		IS:513-94 Gr-O-SK		
1	FLAT MOULDING	2x20x580		IS:513-94 Gr-O-SK		
2	FLAT MOULDING	2x20x380		IS:513-94 Gr-O-SK		
1	REXINE	1.5x125x2200		RDSO/SPEC. C-9503, TY-II		
1	REXINE	1.5x550x650		RDSO/SPEC. C-9503, TY-II		
1	PU FOAM		SCN <sub>6</sub> 6-1-610			ITEM-4
1	COMPREG PLYWOOD	4x434x550		RDSO/SPEC. C-9497, TY-I		
1	SEAT FRAME		SCN <sub>6</sub> 6-1-609			COL-I

NO OFF DESCRIPTION AND DIMENSIONS GROUP: 6-1 SEATS BERTHS

PER ASY: 1

SCALE: 1:5

DATE: 19-09-2006

DATE OF FIRST ISSUE: 21-11-2002

ASSEMBLY DRAWING

SCN<sub>6</sub>-6-1-601

CAD FILE: C:\MD-CAD\201\6-1\608-SF00.DWG

DATA CODE NO: 201

INDIAN RAILWAY STANDARDS

SHEET 1 OF 1

INTEGRAL COACH FACTORY CHENNAI-38

SCN<sub>6</sub>-6-1-608

FORM I.R. A1 840X600