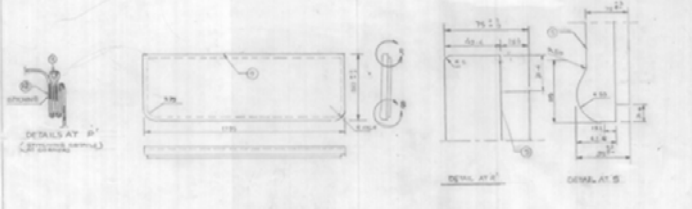


SECTION CC
 SECTION BB
 SECTION AA



NOTES:
 1. All work to be done in accordance with the provisions of the contract.
 2. The work shall be done in accordance with the specifications.
 3. The work shall be done in accordance with the drawings.
 4. The work shall be done in accordance with the instructions of the Engineer.
 5. The work shall be done in accordance with the instructions of the Engineer.
 6. The work shall be done in accordance with the instructions of the Engineer.
 7. The work shall be done in accordance with the instructions of the Engineer.
 8. The work shall be done in accordance with the instructions of the Engineer.
 9. The work shall be done in accordance with the instructions of the Engineer.
 10. The work shall be done in accordance with the instructions of the Engineer.

NO.	DESCRIPTION	QTY.	UNIT	REMARKS
1	CONCRETE	100	CUM	
2	STEEL	50	KG	
3	BRICK	1000	SQ. FT.	
4	PLASTER	100	SQ. FT.	
5	PAINT	10	GAL.	
6	LABOR	100	MAN-DAYS	
7	TRANSVERSE UPPER	1	NO.	
8	TRANSVERSE LOWER	1	NO.	
9	TRANSVERSE MIDDLE	1	NO.	
10	TRANSVERSE LOWER	1	NO.	
11	TRANSVERSE UPPER	1	NO.	
12	TRANSVERSE LOWER	1	NO.	
13	TRANSVERSE MIDDLE	1	NO.	
14	TRANSVERSE LOWER	1	NO.	
15	TRANSVERSE UPPER	1	NO.	
16	TRANSVERSE LOWER	1	NO.	
17	TRANSVERSE MIDDLE	1	NO.	
18	TRANSVERSE LOWER	1	NO.	
19	TRANSVERSE UPPER	1	NO.	
20	TRANSVERSE LOWER	1	NO.	

TRANSVERSE UPPER
 BIRTH COMPLETE (LH) FOR ACCN
 COACH (LH) DRAWN BY SPESGIII
 WEST CENTRAL RAILWAY
 CIVIL ENGINEERING WORKS
 DUBLIN C. W. 672