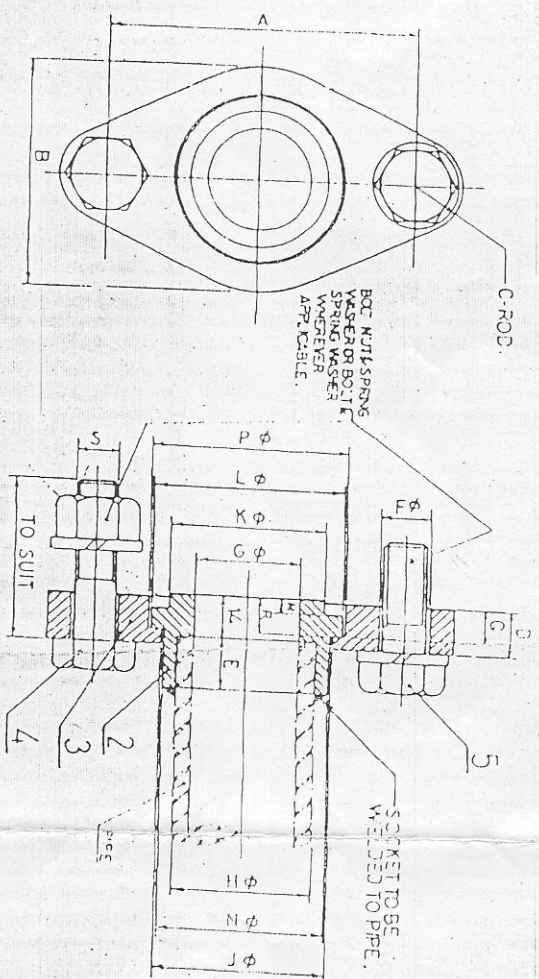


ALL ITEMS TO THIS DRAWING SHALL ALSO CONFORM TO LATEST RDSO SPEC. NO. DL-ABR AND SHALL BE MANUFACTURED BY AND PROCURED FROM RDSO APPROVED SOURCES ONLY.



PIPE SIZE	A	B	C	D	E	F	G	H	J	K	L	M	N	P	Q
12 mm NB	95.104	70	14.5	16	17.5	17.5	32.5	43.5	51.84	51.84	51.84	51.84	51.84	51.84	51.84
25 mm NB	176.104	57	13	14.5	16	13.5	25	34.5	44.7	44.7	44.7	44.7	44.7	44.7	44.7
30 mm NB	203.04	53	13	14.5	14.5	13.5	20	34.5	44.7	44.7	44.7	44.7	44.7	44.7	44.7
32 mm NB (STANDARD)	95.104	70	14.5	16	17.5	17.5	20	27.5	31.84	31.84	31.84	31.84	31.84	31.84	31.84
19 mm NB	70.104	53	13	14.5	14.5	13.5	15	22.5	25.92	25.92	25.92	25.92	25.92	25.92	25.92
15 mm NB (STANDARD)	95.104	70	14.5	16	17.5	17.5	15	22.5	25.92	25.92	25.92	25.92	25.92	25.92	25.92

NOTE:-

- 1- DIMENSIONS SHOWN ARE OBLIGATORY.
- 2- TEST PRESSURE TO Kgf/cm².
- 3- ALL STEEL ITEMS SHALL HAVE MANUFACTURER'S INITIALS STAMPED AT SUITABLE LOCATION. RUBBER ITEM SHALL HAVE MANUFACTURER'S INITIALS, MONTH AND YEAR OF MANUFACTURE LEGIBLY MOULDED AT SUITABLE LOCATION.

② MATERIAL FOR SOCKET & FLANGE FOR BRAKE PIPE JOINT

IS: 2062 - 2006 E 250A.

③ MATERIAL FOR SOCKET & FLANGE FOR BRANCH PIPE JOINT

STAINLESS STEEL TO IS: 6931
1992 X04 Gr. 19 Ni 9 30.4 SI.
STAINLESS STEEL TO IS: 6931
1992 X04 Gr. 19 Ni 9 30.4 SI.

ITEM NO.	DESCRIPTION	REVISED	DATE
1	WELDED TO PIPE	REVISED	12/8
2	WELDED TO PIPE	REVISED	12/8
3	WELDED TO PIPE	REVISED	12/8
4	WELDED TO PIPE	REVISED	12/8

ITEM	DESCRIPTION	NO. REF. DRA.	DATE	BY
1	BOLT & SPRING WASHER	1	12/8	WD
2	BOLT, NUT & SPRING WASHER	2	12/8	WD
3	FLANGE	3	12/8	WD
4	SOCKET	4	12/8	WD
5	GASKET	5	12/8	WD

FOR AIR BRAKE ON WAGONS
FLANGE WELDED JOINT
[PIPE TO EQUIPMENT]

WD-63062-S-07

401

Spare copy

RDSO
401