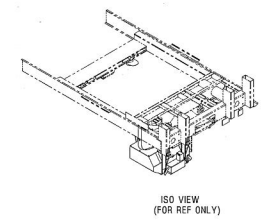


ALT. NO.	ALT. DATE	ZONE	ALTERATIONS	AUTHORITY
a	15/05/2013	H-15	DRAWING NO. FOR ITEM 10 AND 11 MENTIONED.	DY.CME/D-3
b	03/09/2014	H-15	1. DRAWING NO. FOR ITEM-11 CHANGED, ITEM-12 ADDED AND OPA FOR ITEM-9 WAS 1.	DY.CME/D-3
c	22/09/2014	H-15	DRAWING NO. AND MATERIAL SPEC. FOR ITEM-11 MODIFIED AND ITEM-12 DELETED.	DY.CME/D-3
d	14/07/2015	ALL H-15	1. DRAWING UPDATED. 2. DIA OF CLAMP WAS 150MM IN ITEM-9.	DY.CME/D-2



ENTERED INTO DATA BASE
22 JUL 2015

ITEM NO.	DESCRIPTION & DIMENSIONS	QTY	REF. DRG.	MATL. & SPEC.	REMARKS
12	GENERAL INTERFACE ARRET. FOR BALL VALVE OPENING MECHANISM	1	EE-14073	FE50/20H/4/CG-09	NIL
11	ARRET. FOR OPERATING 5" BALL VALVE FROM INSIDE LAVATORY	1	NIL	MOS-41403	NIL
10	RUBBER CONNECTOR	1	MIC05979	NIL	NIL
9	CLAMP Ø 160 MM	2	NIL	IS: 4762-04 A151304	NIL
8	PLATE	4	CC03115	NIL	NIL
7	HEX HEAD SCREW M10X25	4	LH*W02	IS: 1364 PT-2-82 S.S.304	ITEM-17 COATING TO MTS 097
6	SPRING WASHER B10	8	LH*W09	IS: 3063-1994	ITEM-21 COATING TO MTS 097
5	WIRE CABLE, Ø 8MM-7X7	2	NIL	DIN 3055 STAINLESS STEEL	L=3000
4	SPRING WASHER B15	16	LH*W09	IS: 3063-1994	ITEM-23 COATING TO MTS 097
3	5.5 NYLOC NUT M16 (A2-70 TO IS4367 PT.14-04)	8	NIL	IS: 7002-2005 150-7040	NIL
2	STAINLESS STEEL HEX HEAD SCREW M16X50(A2-70 TO IS4367 PT.14-04)	8	NIL	IS: 1364 PT-2-82	NIL
1	DRCE BIO-DIGESTER SYSTEM	1	MIC05855	NIL	NIL

WELD LENGTH NIL	ITEM GROUP NIL	DESCRIPTION & DIMENSIONS LAV. & ITS FITTINGS	ASSEMBLY FILE: m1005854.d, p=1 (3D)	DETAIL DRG SUPERSEDES: M1005854 ALT c	MATL. & SPEC.	REMARKS
WEIGHT NIL	S. AREA NIL	LENGTH/DIA NIL	WIDTH/THICK. NIL	HEIGHT NIL	<p style="text-align: center;">MOUNTING OF DRCE BIO-DIGESTER SYSTEM (RH)</p> <p style="text-align: center;">RAIL COACH FACTORY, KAPURTHALA</p> <p>रेल कोच फैक्टरी कपूरथला IRS PL NO. NIL</p> <p style="text-align: right;">DRG. NO. M1005854</p>	

THIS DRAWING IS THE INTELLECTUAL PROPERTY OF RAIL COACH FACTORY, KAPURTHALA. THIS DRAWING SHOULD NOT BE REPRODUCED, ALTERED, USED FOR MANUFACTURING OR ANY OTHER PURPOSE WITHOUT PERMISSION FROM OFFICE OF GENERAL MANAGER, RAIL COACH FACTORY, KAPURTHALA.

"JOINTLY DEVELOPED BY IR & DRDO"

ANY MANUAL ALTERATION SHALL AUTOMATICALLY RENDER THIS DRAWING INVALID. DETAIL DRGS STARTING WITH "LI" ARE INTERNAL REFERENCE LISTS ONLY AND ARE NOT FOR ISSUE.

FOR UNTOLERANCED DIMENSIONS REFER MDG0008 DATE OF FIRST ISSUE 09/10/2012 CGM BY *Amme*

