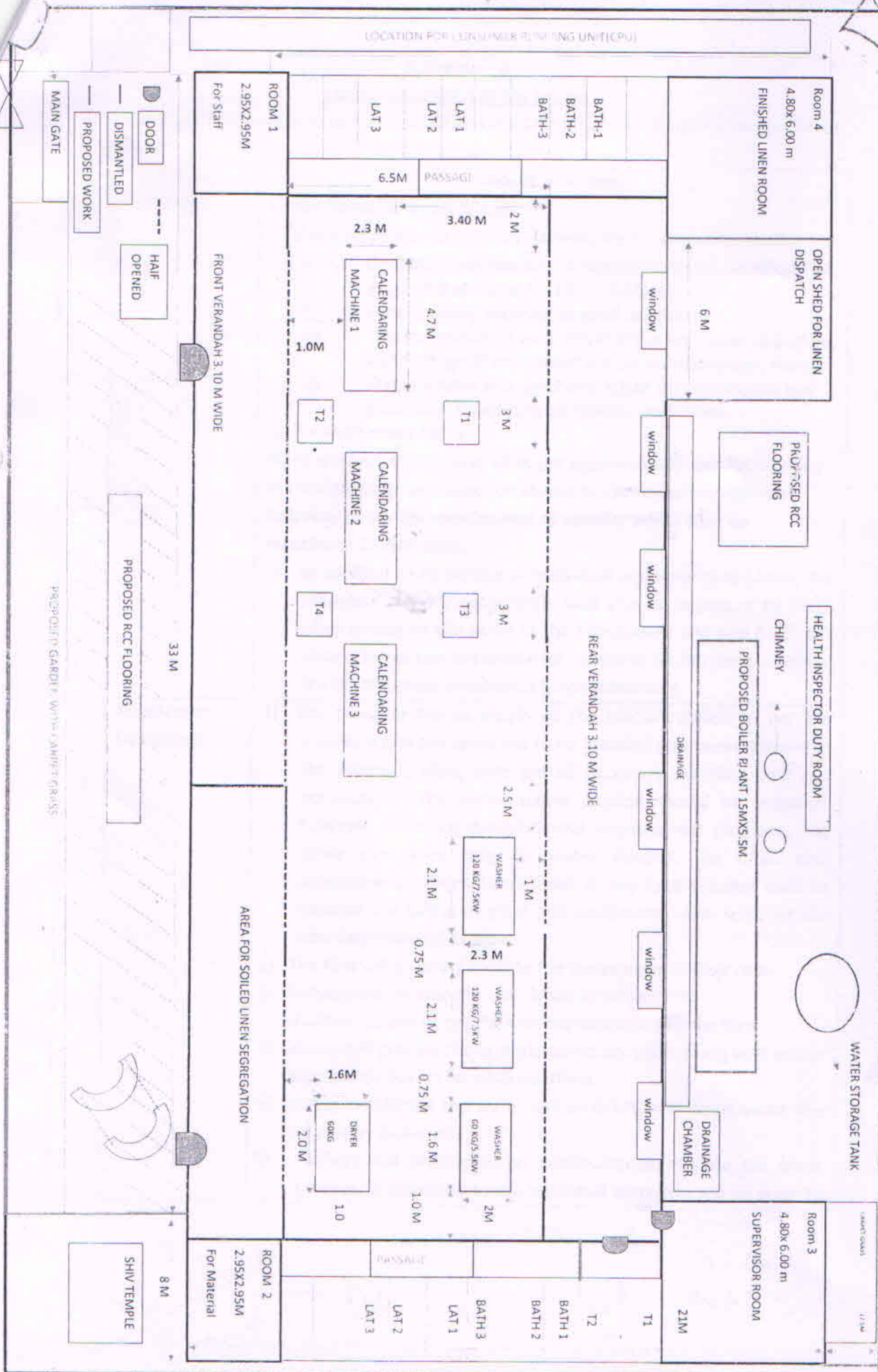


PROPOSED LAYOUT FOR INSTALLATION OF LAUNDRY EQUIPMENTS AT BHOPAL DRG NO. 2 After dismantle



LOCATION FOR LINEN PUMPING UNIT (CPU)

Room 4
4.80x 6.00 m
FINISHED LINEN ROOM

OPEN SHED FOR LINEN
DISPATCH

PROPOSED RCC
FLOORING

HEALTH INSPECTOR DUTY ROOM

CHIMNEY

PROPOSED BOILER PLANT 15Mx5.5M

WATER STORAGE TANK

DRAINAGE
CHAMBER

Room 3
4.80x 6.00 m
SUPERVISOR ROOM

Room 1
2.95x2.95m
For Staff

DOOR
DISMANTLED
PROPOSED WORK

HAIF
OPENED

FRONT VERANDAH 3.10 M WIDE

PROPOSED RCC FLOORING

PROPOSED GARDEN WITH GRASS

AREA FOR SOILED LINEN SEGREGATION

SHIV TEMPLE

Room 2
2.95x2.95m
For Material

LAT 3

LAT 2

LAT 1

BATH-3

BATH-2

BATH-1

PASSAGE

CALENDARING
MACHINE 1

CALENDARING
MACHINE 2

CALENDARING
MACHINE 3

T1

T3

WASHER
120 KG/5KW

WASHER
120 KG/5KW

WASHER
60 KG/5 KW

T2

T4

DRYER
60KG

1.0

PASSAGE

LAT 2

LAT 3

BATH 3

LAT 1

BATH 2

BATH 1

T2

T1

21M

window

window

window

window

window

window

window

33 M

8 M

2 M

3.40 M

4.7 M

2.3 M

6.5 M

1.0 M

3 M

3 M

3 M

2.5 M

1 M

2.1 M

0.75 M

2.1 M

0.75 M

1.6 M

1.0 M

2 M

1.0 M

1.6 M

2.0 M

1.0

1.0 M

1.0 M

1.0 M

1.0 M

1.0 M

1.0 M

1.0 M

1.0 M

1.0 M

1.0 M

1.0 M

1.0 M

1.0 M

1.0 M

1.0 M

1.0 M

1.0 M

1.0 M

1.0 M