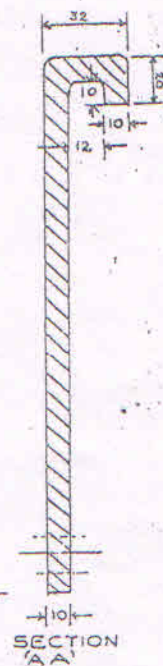
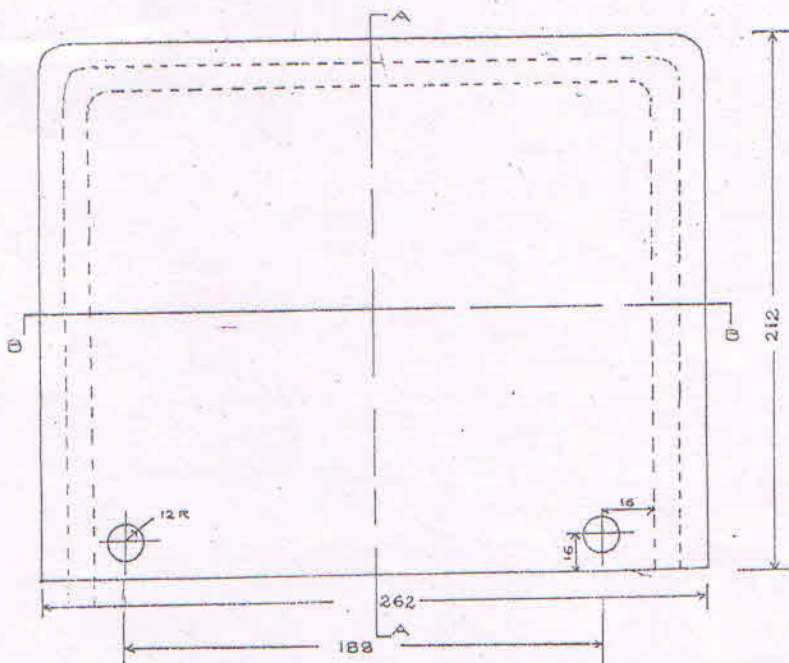
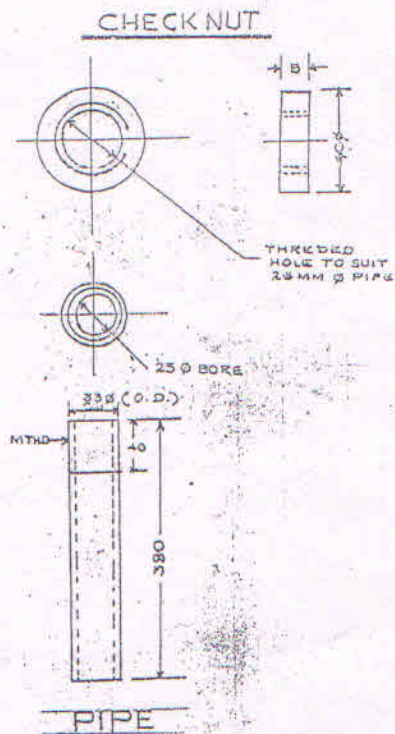
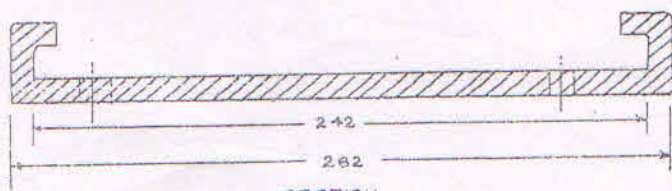


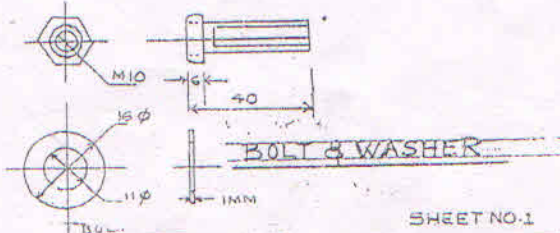
JUNCTION BOX



SECTION AA



SECTION BB
COVER

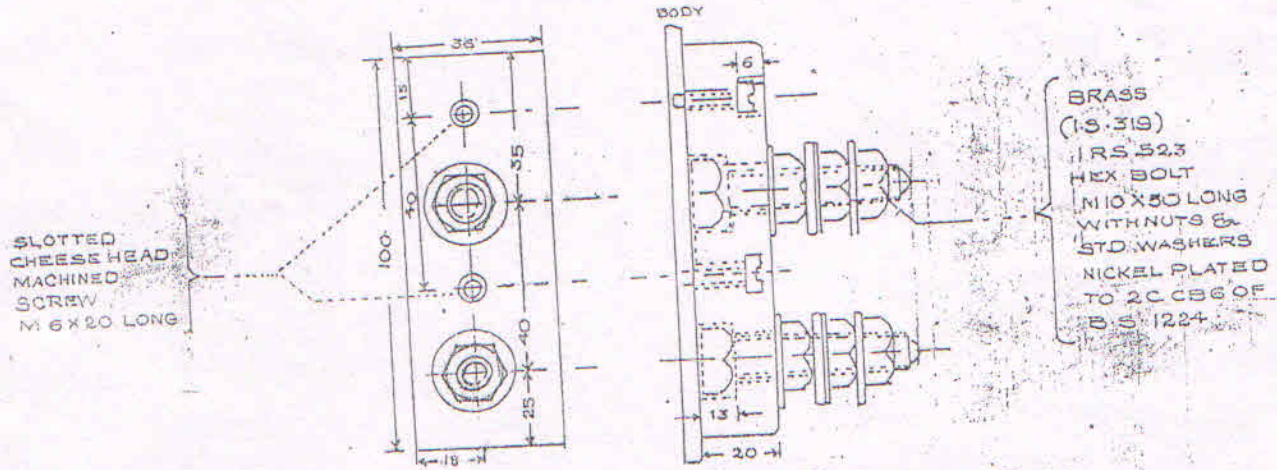


BOLT & WASHER

SHEET NO.1

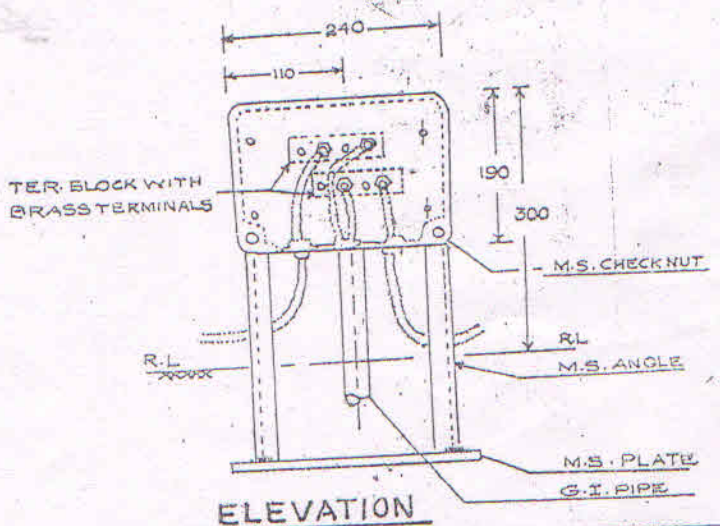
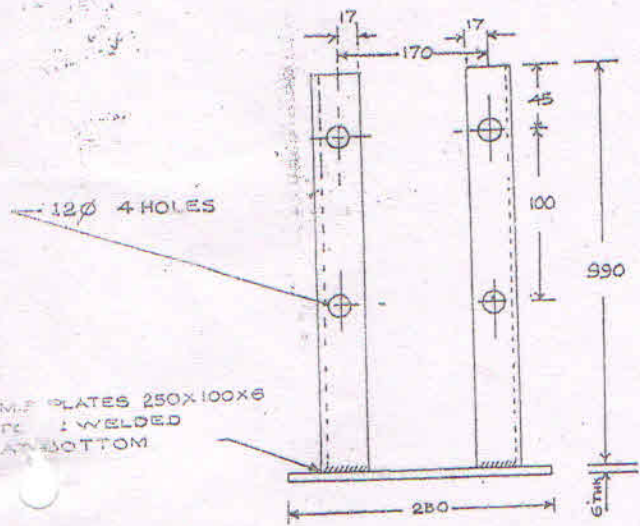
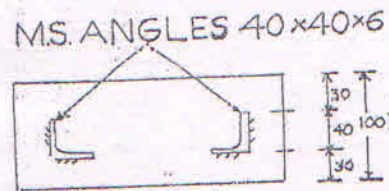
TRACK LEAD
JUNCTION BOX

DATE	CENTRAL RLY (SRT) DADAR	DRAWING NO.
		R-ST/C/160/2
	DSTE 'C' DADAR	(IN TWO SHEETS)



TERMINAL ASSEMBLY

MATERIAL: TERMINAL BLOCK
PHOENOLIC MOULDING
TYPE: HD BS. 771



ELEVATION

NOTES

- > ALL DIMENSIONS ARE IN MM
- > ALL DIMENSIONS SHALL BE WITHIN ±0.5 UNLESS OTHERWISE SPECIFIED, DEPENDING UPON RELATED DIMENSIONS
- > FIBRE GLASS DRAFT SPCN. RD30/SPN/Z31/1997 IN BLACK OR RED COLOUR.
- > COVER SLIDES OVER FROM OUTER PERIPHERI OF JUNCTION BOX
- > THREADED HOPE PIPE 30MM Ø X 380 MM LENGTH TO BE FITTED FOR CABLE ENTRY.

SR NO	DESCRIPTION	MATERIAL	QTY
1	TRACK LEAD JB (COMPLETE WITH COVER)	FIBRE GLASS	1 NO.
2	TERMINAL BLOCKS	PHOENOLIC MOULDED	2 NOS.
3	M.S. PLATE	SIZE: 250X100X6	1 NO
4	M.S. ANGLE	SIZE 40X40X(990) 6	2 NOS
5	WASHER	M.S.	2 NOS
6	BOLT	M.S.	2 NOS
7	CHECK NUT	M.S.	2 NOS
8	HOPE PIPE	H.D.P.E	1 NO.

SHEET NO 2

DATE: _____ CENTRAL RLY (S&T) DR. DRAWING NO: _____

TRACK LEAD JUNCTION BOX

R-ST/C/160/II