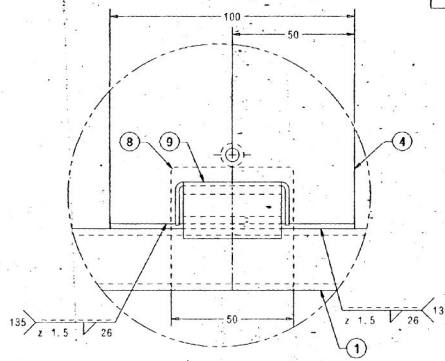
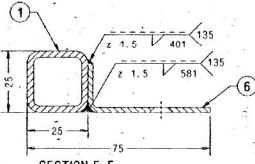


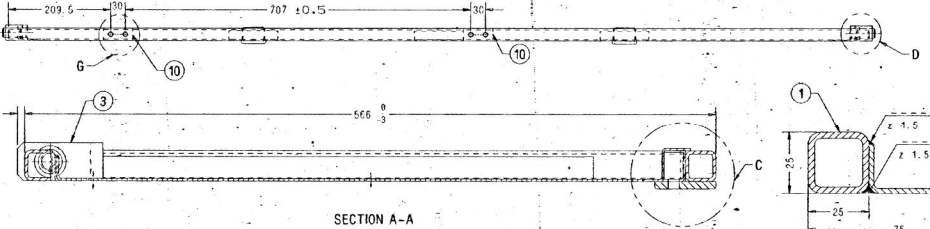
DETAIL AT-B
SCALE 1:1



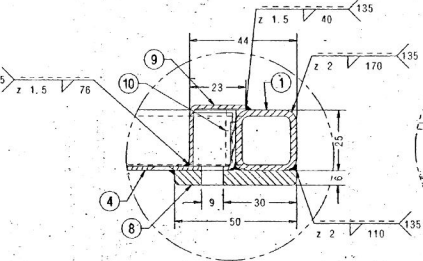
DETAIL AT-E
SCALE 1:1



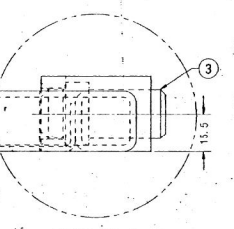
SECTION F-F
SCALE 1:1



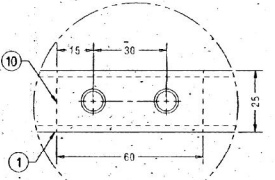
SECTION A-A
SCALE 1:2



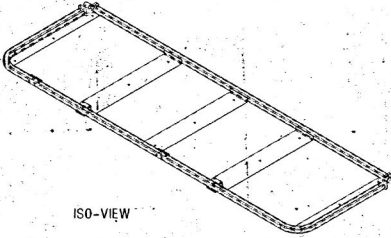
DETAIL AT-C
SCALE 1:1



DETAIL AT-D
SCALE 1:1



DETAIL AT-G
SCALE 1:1



ISO-VIEW

- NOTE:-
1. FRAME ASSEMBLY TO BE PAINTED WITH ONE COAT OF RED OXIDE ZINC CHROMATE TO IS: 2074-92.
 2. ALL WELDS SHOULD BE GROUND.
 3. ALL SHARP CORNERS SHOULD BE ROUNDED OFF.

ALT. NO.	ALT. DATE	ZONE	ALTERATIONS	AUTHORITY
a	09/10/99	ALL	1. PROTECT ANGLE (ITEM-9). MODIFIED TO SUIT. THE HOOK OF SUSPENSION STRAP. 2. FOR ITEM-3 & 9, DIMENSIONS 25, 23, 6 & 21.8 WERE: 19.6, 19.6, 5 & 16.4 RESPECTIVELY. 3. RAW MATERIAL SIZE OF ITEMS-8 & 9 WERE 5X30.4X50 & 1.6X36.6X77 RESPECTIVELY. 4. NOTE-6 DELETED.	DIC NO. MD990197
b	19/03/2004	ALL	1. DRG. MADE IN 3D, ISO-VIEW ADDED & ALL VIEWS UPDATED. ACCORDINGLY. 2. ITEM-10 ADDED. 3. INDIVIDUAL DRGS. MADE FOR ITEMS 4 TO 9 i.e. DRG. NOS. ADDED & MAT. SPEC. DELETED. 4. FOR ITEMS-1 & 2, SPEC. YEAR AND SIZE OF SO. TUBE WAS 1995 AND 25.4X25.4 RESPECTIVELY. 5. MB TAPPED HOLES PROVIDED THROUGH ITEM-10. 6. Ø 10 THROUGH HOLES PROVIDED IN THE FRONT SO. TUBE AT THE LOCATION OF MB TAPPED HOLES IN ITEM-10.	DIC NO. MD040011

SCANNED
53 MAY 2002

ITEM	DESCRIPTION & DIMENSIONS	QUANTITY	DETAIL DRG	MAT. & SPEC.	REMARKS
10	BRACKET 4X25X60	2	NIL	IS:5006-92 Fe-330	NIL
9	PROJECT ANGLE	2	SE61402	NIL	NIL
8	WEARING PLATE	2	SE61401	NIL	NIL
7	ANGLE STIFFENER (R.H.)	1	AE61517	NIL	NIL
6	ANGLE STIFFENER (L.H.)	1	AE61516	NIL	NIL
5	CHANNEL STIFFENER	1	AE61515	NIL	NIL
4	CHANNEL STIFFENER	2	AE61514	NIL	NIL
3	BEARING COMPLETE	2	AE61271	NIL	NIL
2	SQUARE TUBE 25X25X2.6X1695	1	NIL	IS:4923-97, CF 9H5, YSt 240	NIL
1	SQUARE TUBE 25X25X2.6X2641	1	NIL	IS:4923-97, CF 9H5, YSt 240	NIL

WELD LENGTH	ITEM	DESCRIPTION & DIMENSIONS	QUANTITY	DETAIL DRG	MAT. & SPEC.	REMARKS	
5.30	M	SEAT & UPPER BERTHS		SUPERSEDES: AEG1449	ALT. a		
WEIGHT		FILE	AEG1449b.pr6 (30)				
13.000	KG	FRAME				SCALE	SSE/REG
S.AREA		FOR LONGITUDINAL UPPER BERTH COMPLETE				1:5	DD
NIL		RAIL COACH FACTORY, KAPURTHALA				DD	DD
NIL		INDIAN RAILWAYS STANDARD				DD	DD
NIL		PL NO. NIL				DD	DD
NIL		DRG. NO. AEG1449				DD	DD
NIL		DATE OF FIRST ISSUE				DD	DD
NIL		20/03/1998				DD	DD
NIL		COM BY				DD	DD
NIL		AEG/SM				DD	DD
NIL		DY.CNE				DD	DD
NIL		N.F.				DD	DD
NIL		COR				DD	DD
NIL		SIZE				DD	DD

ANY MANUAL ALTERATION SHALL AUTOMATICALLY RENDER THIS DRAWING INVALID.
FOR UNTOLERANCED DIMENSIONS REFER MDG0008

DETAIL DRGS STARTING WITH "LI" ARE INTERNAL REFERENCE LISTS ONLY AND ARE NOT FOR ISSUE.
DATE OF FIRST ISSUE 20/03/1998