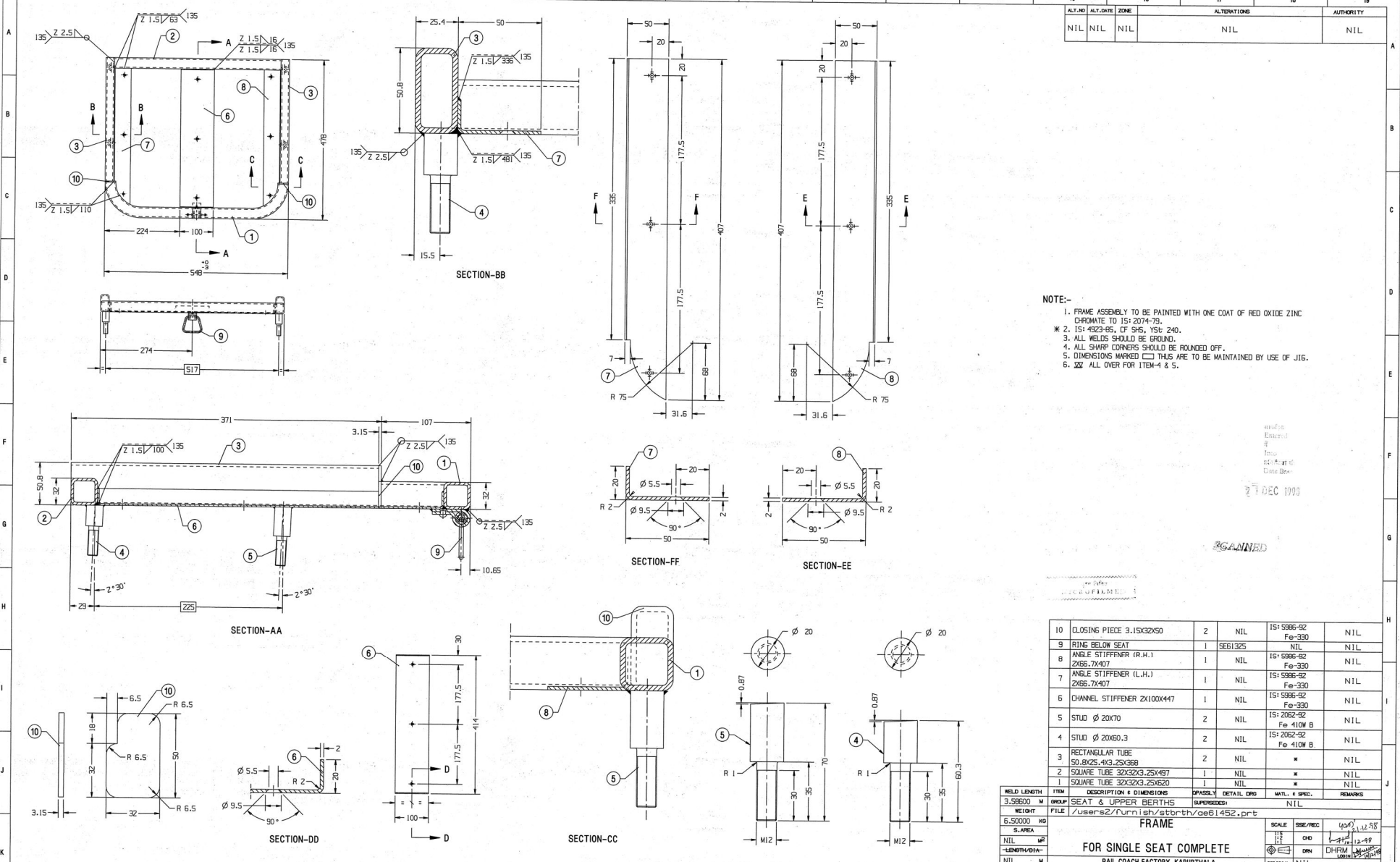


1 2 3 4 5 6 7 8 9 10 11 12 13 14 15 16 17 18 19



ALT. NO.	ALT. DATE	ZONE	ALTERATIONS	AUTHORITY
NIL	NIL	NIL	NIL	NIL

**NOTE:-**  
 1. FRAME ASSEMBLY TO BE PAINTED WITH ONE COAT OF RED OXIDE ZINC CHROMATE TO IS: 2074-79.  
 \* 2. IS: 4323-85, CF SHS, YST: 240.  
 3. ALL WELDS SHOULD BE GRIND.  
 4. ALL SHARP CORNERS SHOULD BE ROUNDED OFF.  
 5. DIMENSIONS MARKED  $\square$  THIS ARE TO BE MAINTAINED BY USE OF JIG.  
 6.  $\square$  ALL OVER FOR ITEM-4 & 5.

27 DEC 1998

SCANNED

THIS IS A COMPUTER GENERATED DRAWING. ANY MANUAL ALTERATION SHALL AUTOMATICALLY RENDER IT INVALID FOR UNTOLERANCED DIMENSIONS REFER MDG0008

REVIEW NO. \_\_\_\_\_ / PROTOTYPE / FINAL DATE OF FIRST ISSUE 08/12/98

INDIAN RAILWAYS STANDARD PL NO. 01130103  
 DRG. NO. AE61452

1 2 3 4 5 6 7 8 9 10 11 12 13 14 15 16 17 18 19