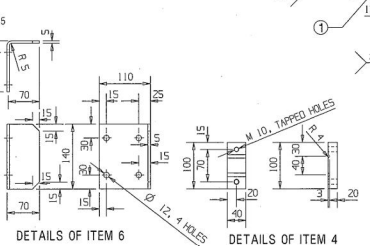
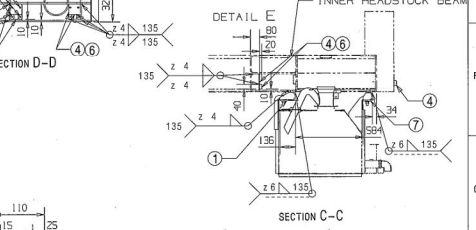
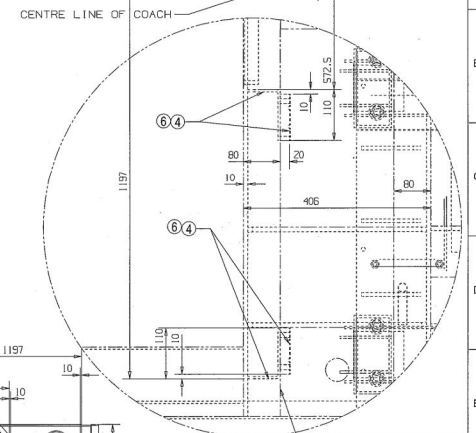


ALT. NO.	ALT. DATE	ZONE	ALTERATIONS	AUTHORITY
1	31/01/2013	ALL	1. ITEM 7 ADDED, ITEM 1,2,3 MODIFIED, ITEM 5 DELETED, SIZE OF ITEM 4 & 6 MODIFIED.	DR. CME/03



ITEM	DESCRIPTION & DIMENSIONS	QTY	ITEM NO.	MATERIAL	REMARKS
7	MOUNTING BRACKET	2	M1005924	NIL	NIL
6	ANGLE 5X140X170	8	NIL	IS: 2062-92 Fe-410 MB	NIL
5	LUG 12X40X100	0	NIL	IS: 2062-92 Fe-410 MB	NIL
4	LUG 20X40X100	16	NIL	IS: 2062-92 Fe-410 MB	NIL
3	MOUNTING BRACKET	2	M1005949	NIL	NIL
2	MOUNTING BRACKET	2	M1005943	NIL	NIL
1	MOUNTING BRACKET	2	M1005842	NIL	NIL

WELD LENGTH	ITEM	DESCRIPTION & DIMENSIONS	QTY	DETAIL DRO	MATL. & SPEC.	REMARKS
NIL	GROUP	UNDERFRAME				
NIL	FILE	Z:\N\10058410.ppt (3D)				
35.000	KG	MOUNTING ARRANGEMENT OF DRBE BIOLOGICAL TANK ON CONVENTIONAL (SG) COACHES				SCALE 5/8"/1" (20)
NIL	M2	RAIL COACH FACTORY, KAPURTHALA				DATE 07 FEB 2013
NIL	M	RAIL COACH FACTORY, KAPURTHALA				DATE 07 FEB 2013
NIL	M	RAIL COACH FACTORY, KAPURTHALA				DATE 07 FEB 2013

THIS DRAWING IS THE INTELLECTUAL PROPERTY OF RAIL COACH FACTORY, KAPURTHALA. ANY REPRODUCTION OR TRANSMISSION OF THIS DRAWING WITHOUT PERMISSION FROM RAIL COACH FACTORY, KAPURTHALA, IS STRICTLY PROHIBITED.

ANY MANUAL ALTERATION SHALL AUTOMATICALLY RENDER THIS DRAWING INVALID. DETAIL DRGS STARTING WITH "LI" ARE INTERNAL REFERENCE LISTS ONLY AND ARE NOT FOR ISSUE.
 FOR UNTOLERANCED DIMENSIONS REFER MD00008 DATE OF FIRST ISSUE 26/09/2012 CGM BY