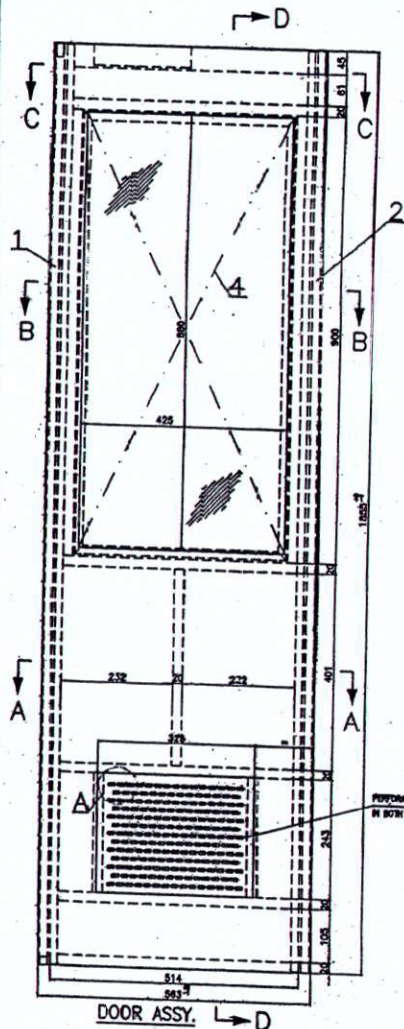


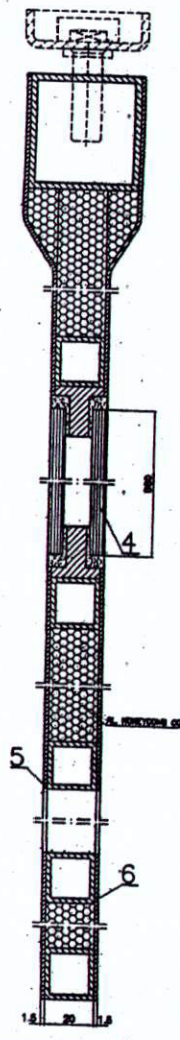
119

ICF/SK-5-6-017

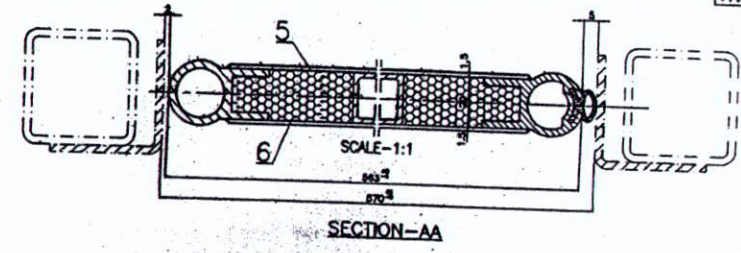
▽ ROUGH MACHINED	⊖ ROUGH CLEANING	ALTERATIONS
▽▽ FINE MACHINED		10/2014
▽▽▽ FINE FINE MACHINED		FOR ITEM-3 INCL. SPEC. ALTD. FROM EPDM TO EPDM.
		SSE/D
		SHV/D



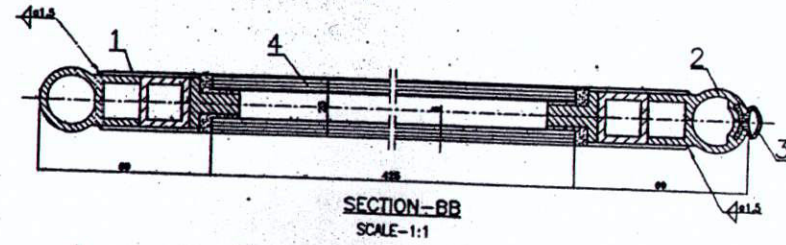
DOOR ASSY. L → D
COL-I AS DRAWN (PIVOT LT. SIDE)
COL-II OPPOSITE (PIVOT RT. SIDE)
SCALE-1:5



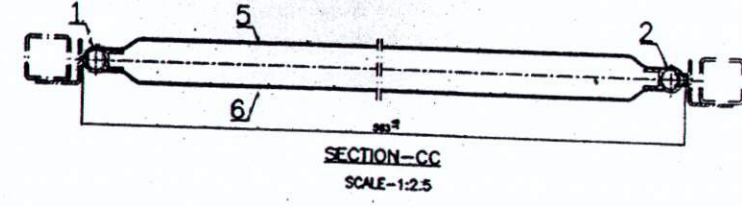
SECTION-DD
SCALE-1:1



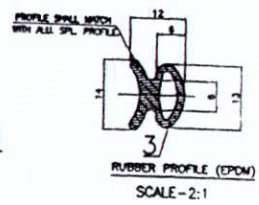
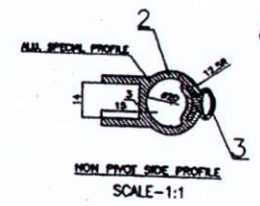
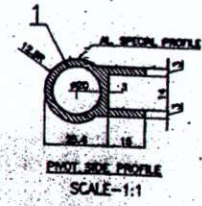
SECTION-AA
SCALE-1:1



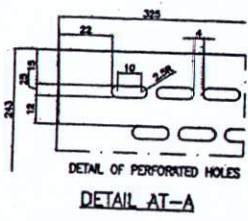
SECTION-BB
SCALE-1:1



SECTION-CC
SCALE-1:2.5



- NOTE:**
1. DOOR SHALL BE MADE WITH SPECIAL PROFILES ON BOTH 20mm SQ. TUBES AND WITH REQUIRED SPOCKETS FOR FINISH DOUBLE SIDE PIVOTE, GLASS PANE AND PANELS SHALL BE WELDED PROPERLY BY MOUNTING SUBMERSED ALUMINUM HONEYCOMB CORE GENERALLY CONFORM TO IS11962(PART-2)-1980 SHALL BE PROVIDED IN DOOR FRAME BEFORE FINISH ONE SIDE OF GLASSING PANEL. ALUMINUM SIDE PROFILE, SPOCKETS AND SPOCKETS SHALL BE OF SAC SPEC.
 2. 20mm TRACK TOUGHENED SAFETY GLASS 2.1mm (MINIMUM) TO MAT. SPEC. IS2357-2008 21000 PGL FPM SHALL SUPPLY WHO FOR ALL HONEYCOMB CORE ALONG WITH SUPPLY OF DOOR. SHALL BE SEALED PROPERLY WITH SILICON SEALANT.
 3. OPEN TOLERANCE TO DWA No. IS7/STP-9-0-001 SHALL GENERALLY BE FOLLOWED WHENEVER TOLERANCE IS NOT MENTIONED FOR DIMENSIONS.
 4. ALL SHARP CORNERS/EDGES TO BE ROUNDED OFF.



NO	QTY	DESCRIPTION & DIMENSIONS	ITEM	REF. DRG.	MAT. & SPEC.	WEIGHT/LMT	REMARKS
1	1	ALL OUTER SHEET	1.5x14x1835	6			
1	1	ALL INNER SHEET	1.5x14x1835	5			
2	2	GLASS	12x14x1835	4	IS7/STP-9-0-001		
1	1	RUBBER PROFILE	12x14x1835	3	IS2357-2008		
1	1	ALL SPL PROFILE (FOR PIVOT SIDE)	L=1835	2	EPDM		
1	1	ALL SPL PROFILE (FOR SIDE)	L=1835	1			

GROUP: 5-6

DOOR ASSEMBLY
(FOR DOUBLE SIDE SWING DOOR ASSY.)

INDIAN RAILWAY STANDARDS

SHEET 1 OF 1