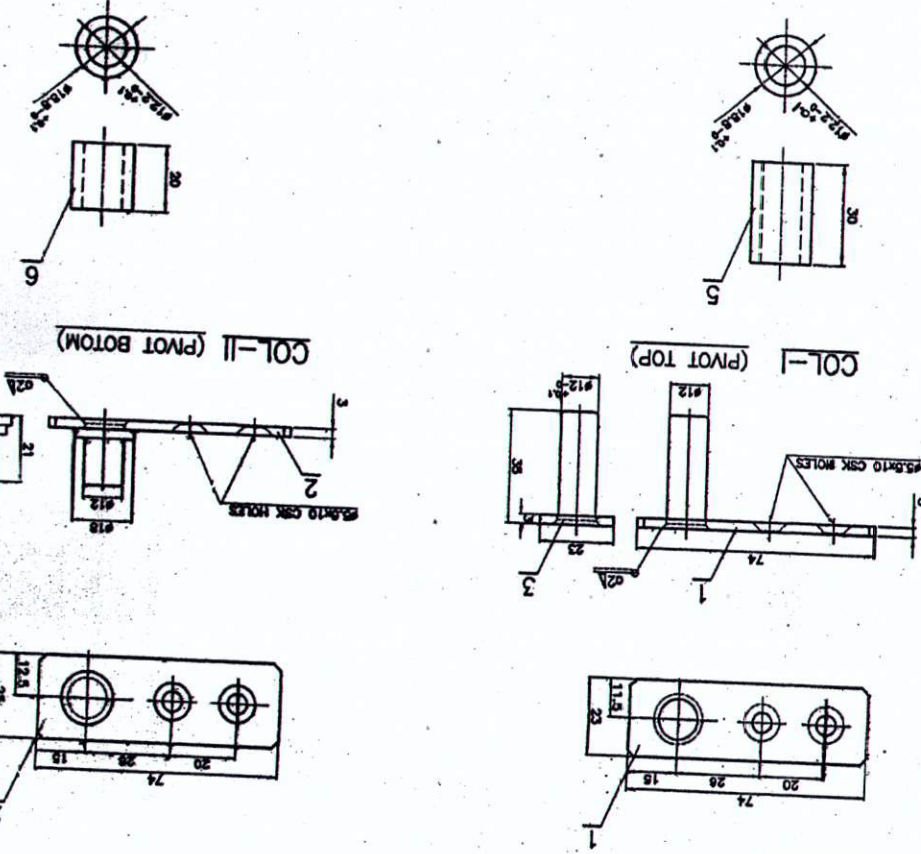


ICF/SK3-5-6-018

- NOTE:-
1. NYLON BUSHES TO ROSS/PCD-IND 04 NYLON BUSHES-2002 SHALL BE PROVIDED.
 2. OPEN TOLERANCE TO DRG. NO. ICF/STD-9-0-001 SHALL GENERALLY BE FOLLOWED. WHEREVER TOLERANCE IS NOT MENTIONED FOR DIMENSIONS.
 3. ALL SHARP EDGES SHALL PROPERLY BE ROUNDED OFF.



▽ - ROUGH MACHINED
 ▽ - FINISH MACHINED
 ◊ - ROUGH CLEARING

NO. OF		GROUP - (2-6)		DESCRIPTION AND DIMENSIONS		MATERIAL & SPEC.		REMARKS	
1	2	1	2	ITEM	REF. DRG.	MAT. & SPEC.	WEIGHT/LIMIT		
1	1	1	1	1	322074	MS-304		FINISH-20	
1	1	1	1	2	322074	MS-304		FINISH-20	
1	1	1	1	3	#12x5	MS-304		FINISH-20	
1	1	1	1	4	#12x5	MS-304		FINISH-20	
1	1	1	1	5					
1	1	1	1	6					

INDIAN RAILWAY STANDARDS
 DATA CODE NO. 329
 CAD FILE: NO-CAD 329 5-6-018-00.DWG
 ICF/STD-9-0-014
 ASSEMBLY DIMENSIONS
 20-08-2014
 SMC/NAME

PIVOT ASSY.
 FOR DOUBLE SIDE SWING DOOR

ICF/SK3-5-6-018
 SHEET 1 OF 1
 INTERNAL COACH FACTORY
 D. Senthil Kumar
 D.M.
 1:1
 1:2.5
 1:1
 SCALE SEE/D.
 SUPERSSEDES
 SUPERSSEDED BY: