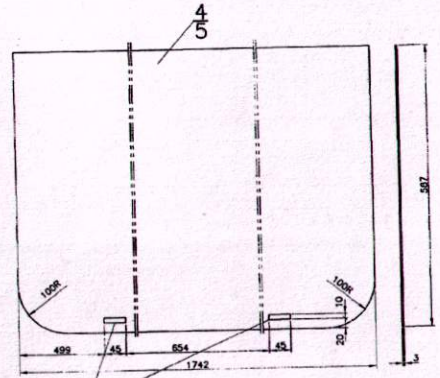
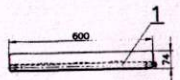
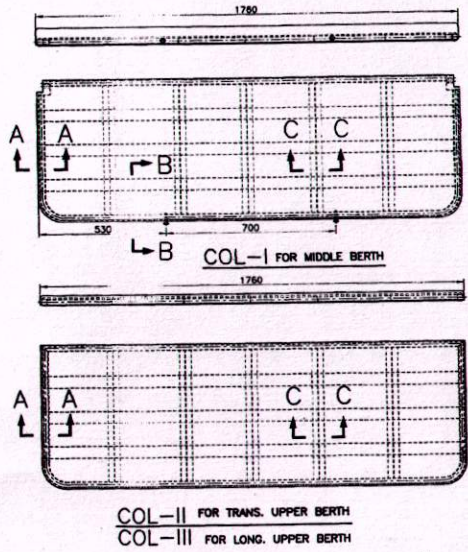


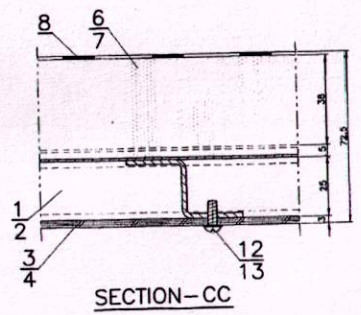
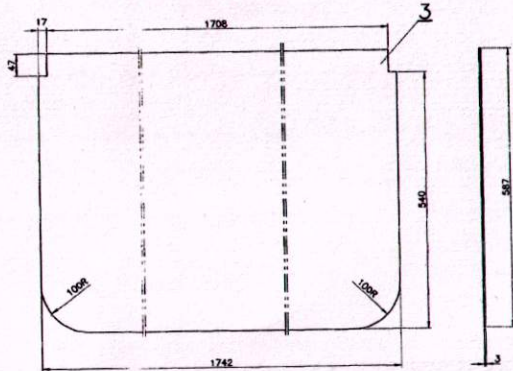
ICF/SK3-6-1-060

▽	ROUGH MACHINED	⑥	ROUGH CLEANING	ALTERATIONS
▽▽	FINISH MACHINED			
▽▽▽	FINE FINISH MACHINED			

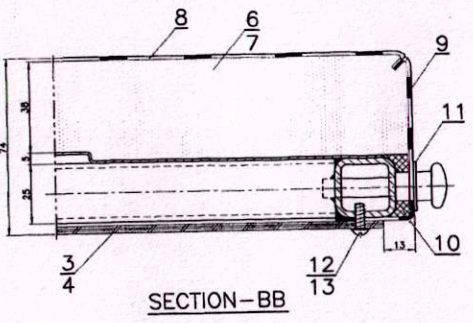
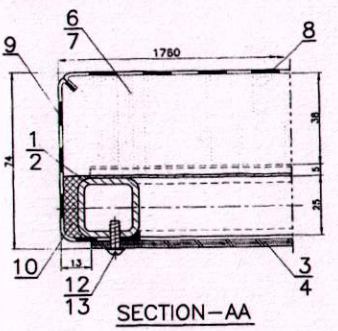


CUT AWAY FOR ITEM-5 ONLY

- NOTE:**
- UPHOLSTERY (ITEM-9) SHALL BE PASTED TO BERTH FRAME WITH NON FLAMMABLE SOLVENT BASED ADHESIVE TO ICF/MD/SPEC.-093.
 - NECESSARY CUTAWAY TO BE DONE FOR ITEM-10 TO SUIT BERTH FRAME PIN AT SITE.
 - ITEM-11 TO BE SUITABLY PRESSED TO ITEM-9 TO SUIT MIDDLE BERTH FRAME PIN AT SITE.
 - FIBRE GLASS WOVEN CLOTH NEED NOT BE PROVIDED WHILE USING DENSIFIED THERMAL BONDED BLOCKS AS CUSHIONING MATERIAL.
 - BEFORE TRIMMING ITEM-1&2 SHALL BE PAINTED WITH GLOSSY FINISH ENAMEL OF SMOKE GRAY TO SHADE NO.692 IS:5-2002.
 - FIBREGLASS WOVEN CLOTH AS PER IS:13128/PART-111991 HAVING MINIMUM DENSITY OF 200.5gm/cm³ AS PER VARIETY NO.20 OF TAB-1 WITH BREAKING STRENGTH WARP & WEFT 220 N/cm WIDTH MIN. OR ALTERNATE FABRIC MADE OUT OF FLAME RESISTANT FIBRE SHALL BE PROVIDED ALL AROUND PU FOAM DULY SEMI NEATLY WITHOUT ANY WRINKLES INCLUDING BETWEEN UPHOLSTERY AND CUSHION AS A FIRE PREVENTION MEASURE.



NO OFF ASSYS. REQD PER COACH			
TYPE OF COACH	COL-I	COL-II	COL-III
SCN ₆	18	18	9
SLR ₂ , SRD	-	2	-



QTY	DESCRIPTION & DIMENSION	ITEM	REF.DRGS	MAT.SPEC	WEIGHT/UNIT	REMARKS
13	PUNCHED WIDER AS 6.3014-MUNIMAN	13		IS:4084		BRIGHT ZINC PLATED
12	WIRING SIZES 6 (M)-60 (M)-SH&M-F	12		IS:4084		
2	EYELET SIZE NO.35	11		IS:4084		
10	FELT 6x30x2900	10				
9	UPHOLSTERY 150x4750	9		IS:2008		
8	UPHOLSTERY 650x1810	8		IS:2008		
7	CUSHION 6-1-610	7		IS:2008		ITEM-3
6	CUSHION 6-1-610	6		IS:2008		ITEM-2
5	L.P SHEET 3x587x1742	5		IS:2008		
4	L.P SHEET 3x587x1742	4		IS:2008		
3	L.P SHEET 3x587x1742	3		IS:2008		
2	BERTH FRAME	2		IS:2008		COL-2
1	BERTH FRAME	1		IS:2008		COL-1

ASSEMBLY DRAWINGS
06-05-2012
DATE OF LATEST ALT DATE OF FIRST ISSUE
ALT

INDIAN RAILWAY STANDARDS
SHEET 1 OF 1
ICF/SK3-6-1-060
FORM--RA1-840X600