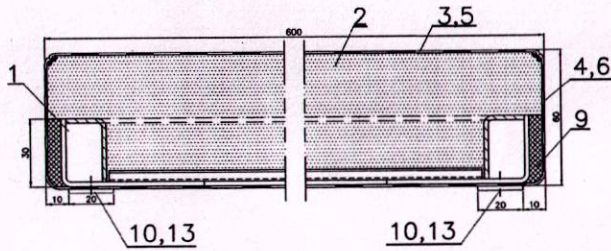
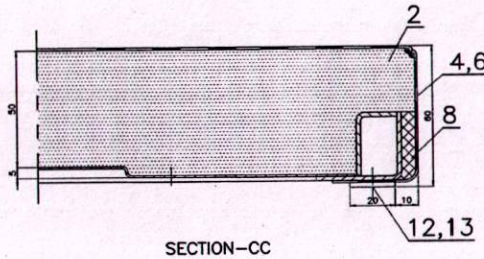
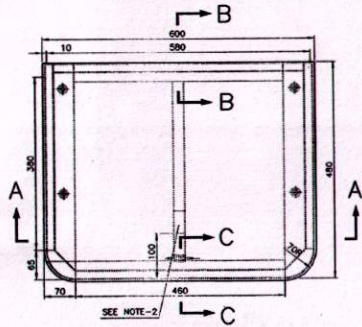
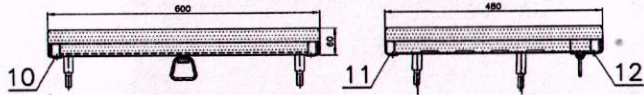


ICF/SK3-6-1-080

▽	ROUGH MACHINED	(01)	ROUGH CLEANING	ALTERATIONS
▽▽	FINE FINISH MACHINED			
▽▽▽	FINE FINISH MACHINED			



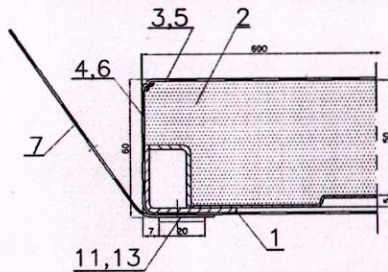
SECTION-AA

	480 FOR ITEM-12
	580 FOR ITEM-11
	380 FOR ITEM-10
20	170x2=340 FOR ITEM-10
20	180x3=540 FOR ITEM-11
20	210x2=420 FOR ITEM-12



NOTE:

- UPHOLSTERY (ITEM-1) SHALL BE PASTED TO THE SEAT FRAME WITH NON FLAMMABLE SOLVENT BASED ADHESIVE TO ICF/MO/SPEC-093.
- METALLIC NAME PLATE OF THE MANUFACTURER WITH MONTH & YEAR OF MANUFACTURE OF SIZE NOT MORE THAN 25x50mm SHALL BE GLUED WITH WATER PROOF ADHESIVE AND SCREWED AS SHOWN IN THE DRG.
- ITEMS-10,11,12 SHALL BE PAINTED WITH RED OXIDE ZINC CHROMATE PRIMER TO SPEC. 2074-92 AND SECOND COAT OF ENAMEL PAINT OF GLOSSY FINISH SMOKE GRAY TO SHADE NO.892 OF IS:5-2007.
- FIBROGLASS WOVEN CLOTH AS PER IS:13126(PART-1)1991 HMMWG MINIMUM DENSITY OF 200.5gm/sq.m AS PER WARPY NO.20 OF TAB-1 WITH BREAKING STRENGTH WARP & WEFT 220 N/cm WIDTH MIN. OR ALTERNATE FABRIC MADE OUT OF FLAME RESISTANT FIBRE SHALL BE PROVIDED ALL AROUND PU FOAM DULY SOFTENED NEATLY WITHOUT ANY WRINKLES INCLUDING BETWEEN UPHOLSTERY AND COMPREG PLYWOOD AS A FIRE PREVENTION MEASURE.
- FIBRE GLASS WOVEN CLOTH NEED NOT BE PROVIDED WHILE USING DENSIFIED THERMAL BONDED BLOCKS AS CUSHIONING MATERIAL.
- BEFORE TRIMMING ITEM-1 SHALL BE PAINTED WITH GLOSSY FINISH ENAMEL OF SMOKE GRAY TO SHADE NO.892 IS:5-2007.



SECTION-BB

NO OF ASSY. REQD. PER COACH:	
TYPE OF COACH:	COL-1 COL-II
SCM:	18 -
WGACCH:	- 16

NO.OFF	DESCRIPTION AND DIMENSIONS	ITEM	REF.DRG	MATL.&SPEC.	WEIGHT/LIMIT	REMARKS																																																								
13/13	PAN HD TAP SCREW ST 4.2x13-F	3	IS:7173-89			BRIGHT ZINC PLATING																																																								
1	1	1	IS:5113-2008 CR-I																																																											
1	1	1	IS:5113-2008 CR-II																																																											
2	2	2	IS:1079-2009 SCM			MEDIUM																																																								
2	2	2	IS:1079-2009 SCM			MEDIUM																																																								
1	1	1	RD50/2008/COAT			COLOUR CODE SAMPLE No. ALMAC-01																																																								
1	1	1	RD50/2008/COAT			COLOUR CODE SAMPLE No. ALMAC-01																																																								
1	1	1	RD50/2008/COAT			COLOUR CODE SAMPLE No. ALMAC-01																																																								
1	1	1	RD50/2008/COAT			COLOUR CODE SAMPLE No. ALMAC-03																																																								
1	1	1	RD50/2008/COAT			COLOUR CODE SAMPLE No. ALMAC-03																																																								
1	1	1	SCM 8-1=81D			ITEM-4																																																								
1	1	1	SCM 8-1=80B			COL-1																																																								
<table border="1"> <tr> <td>NO.OFF</td> <td>DESCRIPTION AND DIMENSIONS</td> <td>ITEM</td> <td>REF.DRG</td> <td>MATL.&SPEC.</td> <td>WEIGHT/LIMIT</td> <td>REMARKS</td> </tr> <tr> <td colspan="7">GROUP: 6-1 SEATS & BERTHS</td> </tr> <tr> <td colspan="7">SUPERSEDED BY:</td> </tr> <tr> <td colspan="7">SCALE: 1:5 (D)</td> </tr> <tr> <td colspan="7">1:1 (A)</td> </tr> <tr> <td colspan="7">1:1 (C)</td> </tr> <tr> <td colspan="7">ALT. CAD. SKETCHES</td> </tr> <tr> <td colspan="7">INTEGRAL COACH FACTORY CHENNAI-38</td> </tr> </table>							NO.OFF	DESCRIPTION AND DIMENSIONS	ITEM	REF.DRG	MATL.&SPEC.	WEIGHT/LIMIT	REMARKS	GROUP: 6-1 SEATS & BERTHS							SUPERSEDED BY:							SCALE: 1:5 (D)							1:1 (A)							1:1 (C)							ALT. CAD. SKETCHES							INTEGRAL COACH FACTORY CHENNAI-38						
NO.OFF	DESCRIPTION AND DIMENSIONS	ITEM	REF.DRG	MATL.&SPEC.	WEIGHT/LIMIT	REMARKS																																																								
GROUP: 6-1 SEATS & BERTHS																																																														
SUPERSEDED BY:																																																														
SCALE: 1:5 (D)																																																														
1:1 (A)																																																														
1:1 (C)																																																														
ALT. CAD. SKETCHES																																																														
INTEGRAL COACH FACTORY CHENNAI-38																																																														
<p>SINGLE SEAT COMPLETE</p>																																																														
<p>CAD FILE: MD-CAD/329/E-1/080---00.DWG</p> <p>INDIAN RAILWAY STANDARDS</p> <p>DATA CODE NO: 329</p> <p>DATE OF REVISION: 25-09-2014</p> <p>DATE OF REVISION: 25-09-2014</p> <p>SME/AME</p>																																																														