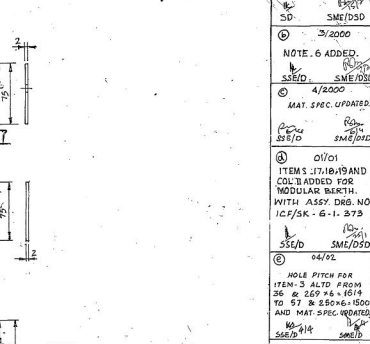
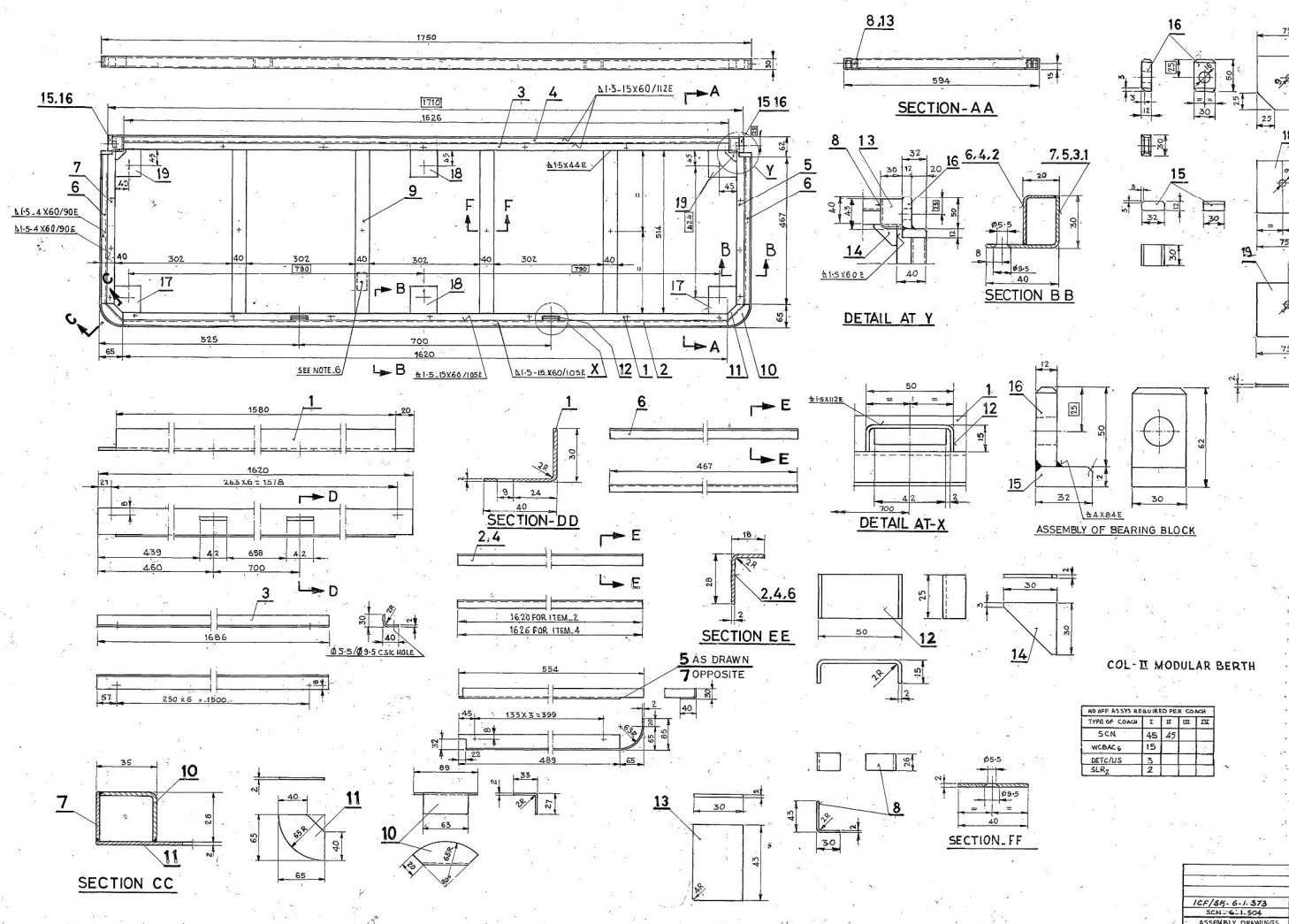


SCN-6-1-505

	10/2001	12/2000	7/2000	DESCRIPTION OF CHG. ORDER	CHG. ORDER NO.	BY	CHKD.	DATE	REVISION	ALTERATIONS
	10/2001 QTY. FOR CHG. ADDED IN COL. 1	12/2000 QTY. FOR DETACHES ADDED IN COL. 1	7/2000 QTY. FOR W.C.A.C.A. ADDED IN COL. 1							



NOTE

- FRAME TO BE SUPPLIED IN PRIME CONDITION (O) WITH ONE COAT OF RED OXIDE ZINC CHROMATE PRIMER TO SPEC. IS: 2074-82
- ALL SHARP CORNERS TO BE ROUND-ED OFF
- DIMENSIONS ENCLOSED BY RECTANGLES TO BE ENSURED BY USE OF JO.
- SUITABLE CHAMFERING TO BE PROVIDED FOR WELDING IN ALL ITEMS.
- WELDING BURRS TO BE REMOVED AND GROUNDED
- METALIC NAME PLATE OF THE MANUFACTURER WITH MONTH & YEAR OF MANUFACTURE OF SIZE NOT MORE THAN 25X50 SHALL BE RIVETED AS SHOWN IN THE DRG.

NO. OF ASSYS. REQUIRED PER COACH	TYPE OF COACH	I	II	III	IX
45	5CA		45		
15	WCBMG		15		
3	MET/MS		3		
2	SLR/S		2		

ITEM NO.	DESCRIPTION & DIMENSION	ITEM REF. DRG.	MAT. SPEC.	REMARKS
19	FLAT 2x75x75		IS: 213-79 Q30 25 35	
18	FLAT 2x75x75		IS: 213-79 Q30 25 35	
17	FLAT 2x75x75		IS: 213-79 Q30 25 35	
16	BEARING BLOCK 12x30x50		IS: 2082-79 Q30 25 35	
15	BEARING BLOCK 12x30x50		IS: 2082-79 Q30 25 35	
14	SUPPORT 2x30x30		IS: 213-79 Q30 25 35	
13	CLOSING PIECE 2x30x45		IS: 213-79 Q30 25 35	
12	CHANNEL 2x25x72		IS: 213-79 Q30 25 35	
11	CORNER PIECE 2x65x65		IS: 213-79 Q30 25 35	
10	CORNER ANGLE 2x56x65		IS: 213-79 Q30 25 35	
9	FLAT 2x40x54		IS: 213-79 Q30 25 35	
8	ANGLE 2x26x69		IS: 213-79 Q30 25 35	
7	ANGLE 2x66x609		IS: 213-79 Q30 25 35	
6	ANGLE 2x42x467		IS: 213-79 Q30 25 35	
5	ANGLE 2x66x609		IS: 213-79 Q30 25 35	
4	ANGLE 2x42x1626		IS: 213-79 Q30 25 35	
3	ANGLE 2x66x1686		IS: 213-79 Q30 25 35	
2	ANGLE 2x42x1620		IS: 213-79 Q30 25 35	
1	ANGLE 2x66x1620		IS: 213-79 Q30 25 35	

DESIGNED BY	171
DRAWN BY	171
DATE	171
SCALE	171
ASSEMBLY DRAWING	171
INDIAN RAILWAY STANDARDS	171
INTEGRAL COACH FACTORY, MADRAS-59.	171
SCN-6-1-505	171