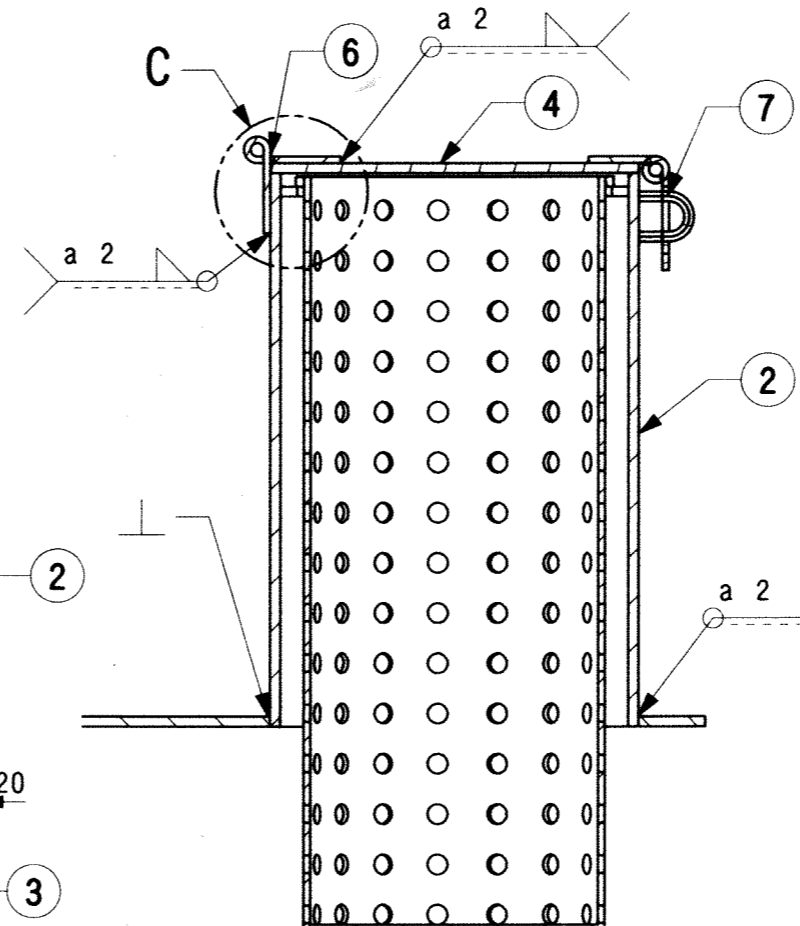
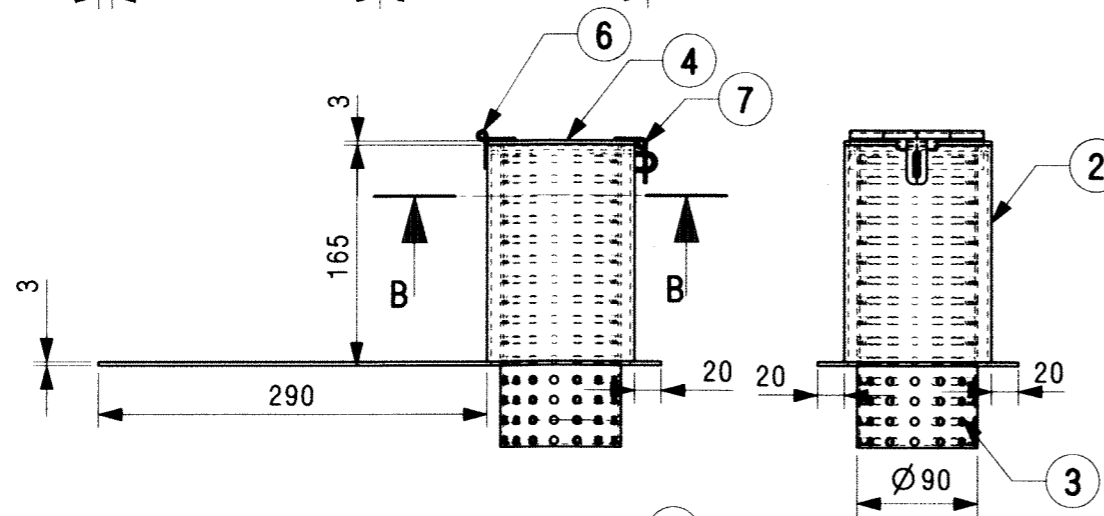
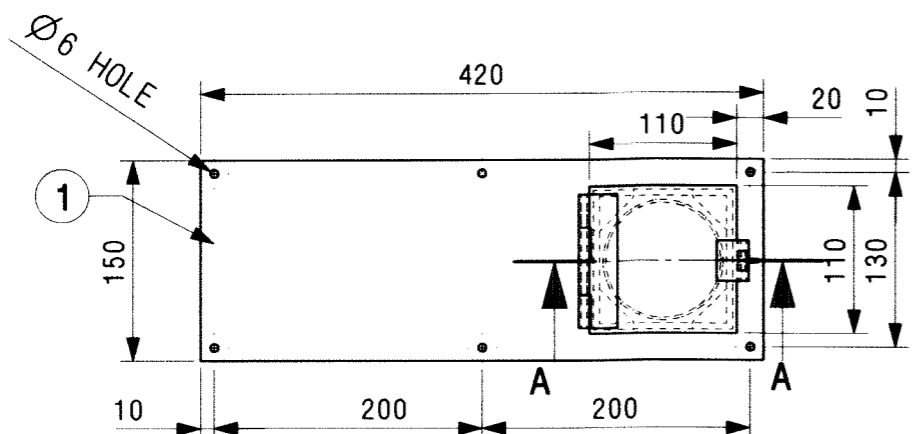
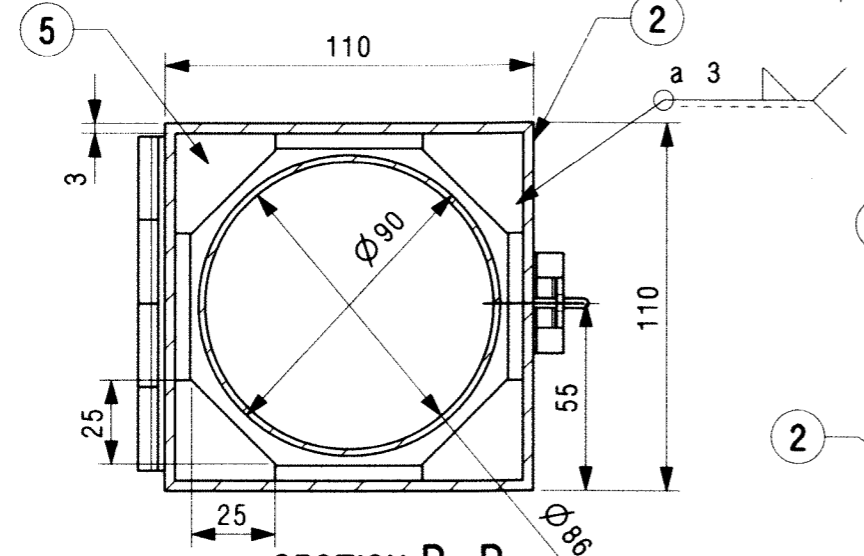


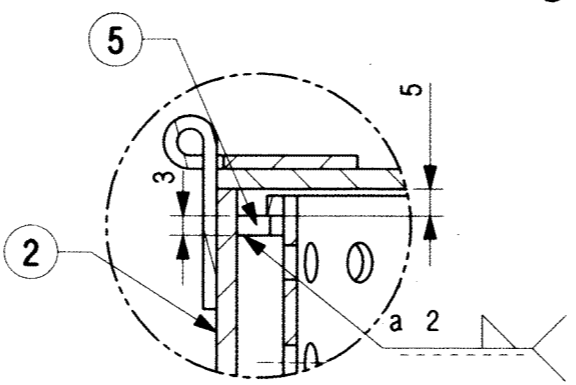
THIS DRAWING IS PROPERTY OF RDSO.
 THE COPYRIGHT, DESIGN RIGHT AND/OR OTHER INTELLECTUAL
 PROPERTY RIGHTS OF THIS DRAWING BELONGS TO THE RDSO ONLY.
 UNAUTHORISED REPRODUCTION, DISCLOSURE OR USE OF THIS DRAWING
 IS PROHIBITED.



DETAILS OF ITEM NO. 3



SECTION B-B
SCALE 1:2



DETAIL C
SCALE 1:1

SECTION A-A
SCALE 1:2

ITEM	DESCRIPTION & DIMENSIONS	NO. OF	REF. DRG.	WT. OF ONE kg	MTL. & SPEC.	REMARKS
7	LOCKING ARRANGEMENT	1			AISI 304	
6	BUTT HINGE 25X25X110	1			AISI 304	
5	RIB 25X25X45*	4			AISI 316L	
4	COVER SHEET 3X110X110	1			AISI 316L	
3	CHLORINE JACKET	1			PVC	
2	BODY SHELL 110X110X165	1			AISI 316L	THICKNESS t= 3 MM
1	TOP PLATE 3X 150X420	1			AISI 316L	

NOTE: -
 1. ALL THE JOINTS OF BODY SHALL BE MADE LEAK PROOF.
 2. WELDING OF ALL STAINLESS STEEL ITEMS TO BE DONE BY SIMILAR ELECTRODES ONLY.

"JOINTLY DEVELOPED BY IR & DRDO"

ALT.	ITEM	SS/42/14	DRAWING REVISED	CKD.	DATE

SUPERSEDED BY:-		INDIAN RAILWAYS	
ASSEMBLY DRGS. SUPERSEDES:-		ICF/RCF TYPE COACHES	
REFERENCE :-	SCALE	P	TOP COVER WITH CHLORINE JACKET
		C	
		D	
	J.S.	SS/04/12	
CDIC NO. :- K503		B.G.	R.D.S.O. [CG]
			CG-12011