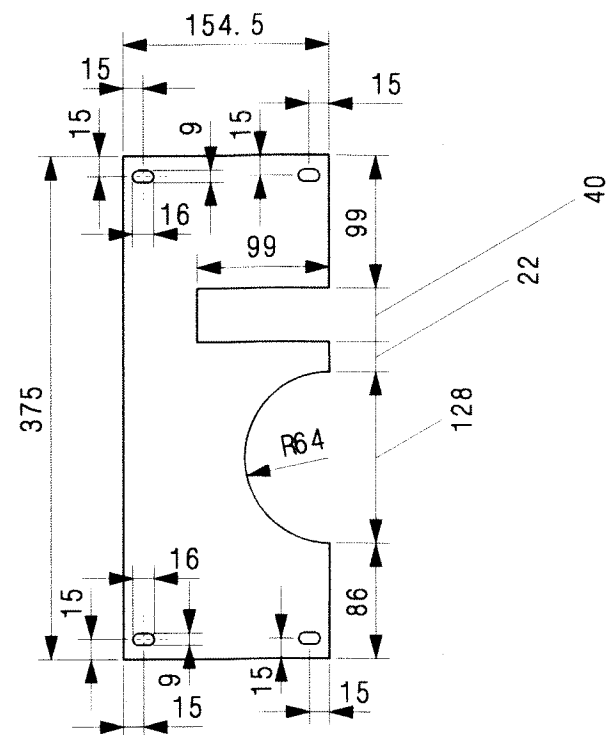
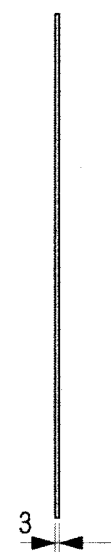
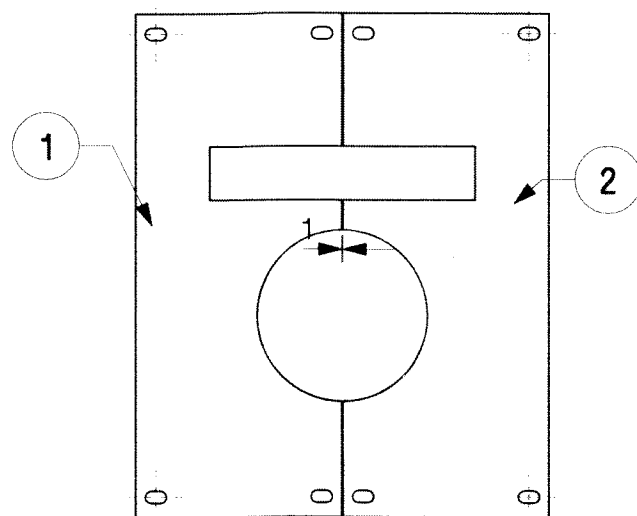


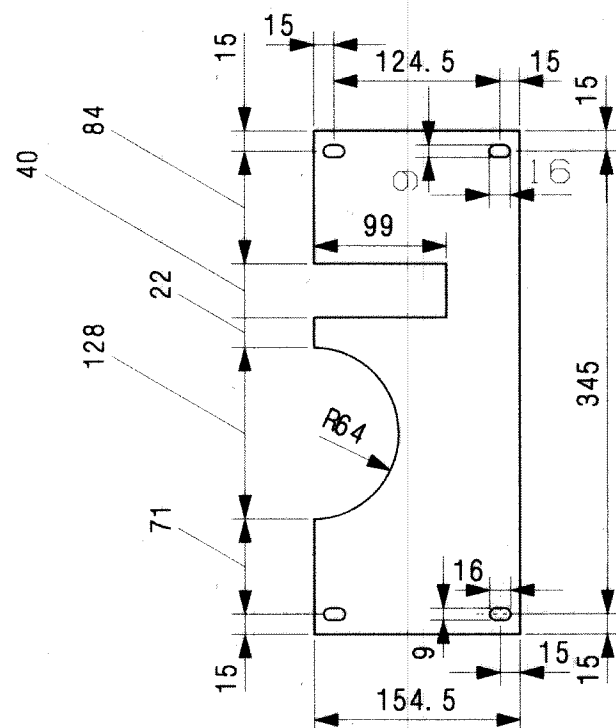
THIS DRAWING IS PROPERTY OF RDSO.
 THE COPYRIGHT, DESIGN RIGHT AND/OR OTHER INTELLECTUAL
 PROPERTY RIGHTS OF THIS DRAWING BELONGS TO THE RDSO ONLY.
 UNAUTHORISED REPRODUCTION, DISCLOSURE OR USE OF THIS DRAWING
 IS PROHIBITED.

C

NOTE:-
ITEM NO. 2 IS MIRROR OF ITEM NO. 1



DETAIL OF ITEM NO.1



DETAIL OF ITEM NO.2

ALT.	ITEM	AUTH.	DESCRIPTION	CKD.	DATE
1		SS/57/16	1. HOLE HOLE Ø 9MM REPLACED WITH ELONGATED HOLE 16X9MM 2. DIMENSION 99 MM WAS 109 AND DIMENSION 40 WAS 30MM.		

ITEM	DESCRIPTION & DIMENSIONS	No. OF OFF	REF. DRG.	WT. OF ONE kg	MTL. & SPEC.	REMARKS
2	SHEET 2X154.5X375	1			AISI316L	
1	SHEET 2X154.5X375	1			AISI316L	

SUPERSEDED BY:-		INDIAN RAILWAYS			
ASSEMBLY DRGS.		SUPERSEDES:-		ICF/RCF TYPE IR BG COACHES	
REFERENCE :-	SCALE	P	 		
		1:5			
		C			
		D	TOP COVER FOR BALL VALVE		
		J.S.			
CDIC NO. :-	K-503	B.G.	R.D.S.O. [CG]		