

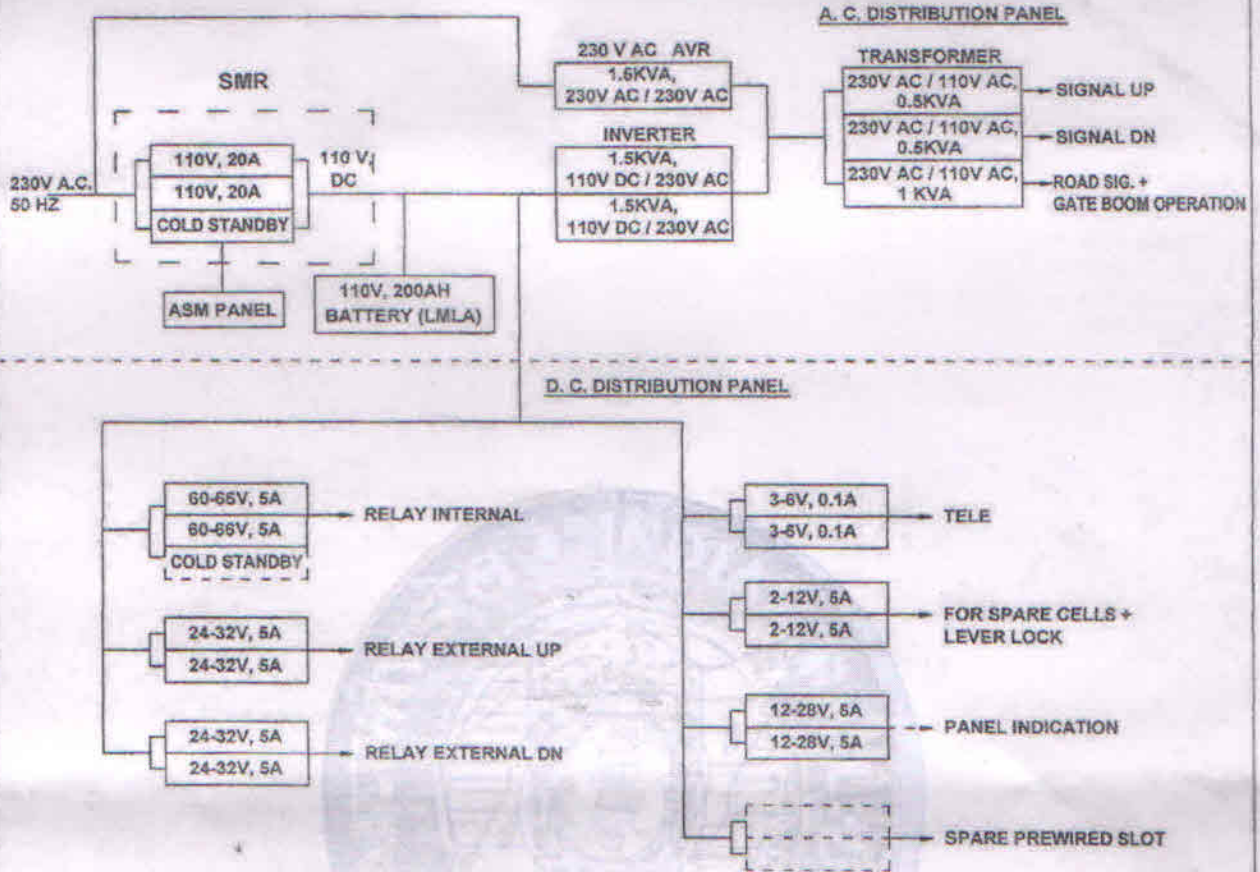
Signature invalid

Digital  
AMIR C  
Date: 26.7.17  
18:15  
Re: STS  
REP  
Location: New Delhi

86

W.C.R.

## IPS FOR LEVEL CROSSING FOR RE/ NON-RE



**NOTES:-**

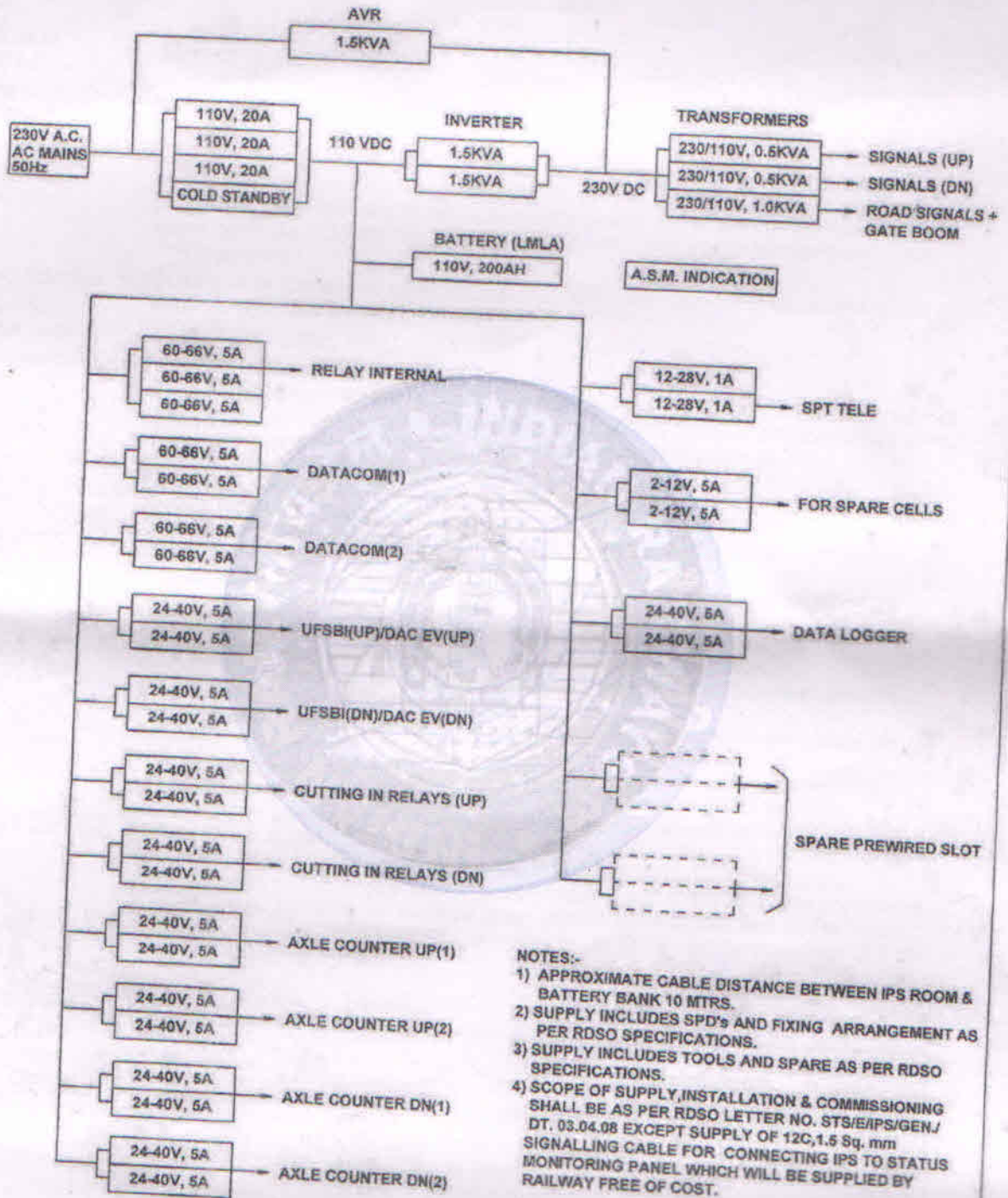
- 1) APPROXIMATE CABLE DISTANCE BETWEEN IPS ROOM & BATTERY BANK 10 MTRS.
- 2) SUPPLY INCLUDES SPD'S AND FIXING ARRANGEMENT AS PER RDSO SPECIFICATIONS.
- 3) SUPPLY INCLUDES TOOLS AND SPARE AS PER RDSO SPECIFICATIONS.
- 4) SCOPE OF SUPPLY, INSTALLATION & COMMISSIONING SHALL BE AS PER RDSO LETTER NO. STS/E/IPS/GEN/J DT. 03.04.08 EXCEPT SUPPLY OF 12C, 1.5 Sq. mm SIGNALLING CABLE FOR CONNECTING IPS TO STATUS MONITORING PANEL WHICH WILL BE SUPPLIED BY RAILWAY FREE OF COST.

WEST CENTRAL RAILWAY				SIGNAL & TELECOMMUNICATIONS
DRAWN BY	CHECKED BY	CHECKED BY	APPROVED BY	IPS FOR L. C. GATE FOR RE / NON RE AREA
<i>ACM</i> 26.7.17	<i>Chupis</i> 26.7.17	<i>26/7/17</i> 26/7/17	<i>Spring</i> 26/7/17	
SSE/D	ESTE/SIG	Dy.C.S.T.E.(SIG)	CSE	DRG. NO. WCR/N-HQ/IPS/LC GATE/2017 /01

W.C.R.

# IPS FOR I.B.S.

AS PER RDSO SPN NO. SDO/IPS/SMP/PI/NRE/001



- NOTES:-
- 1) APPROXIMATE CABLE DISTANCE BETWEEN IPS ROOM & BATTERY BANK 10 MTRS.
  - 2) SUPPLY INCLUDES SPD'S AND FIXING ARRANGEMENT AS PER RDSO SPECIFICATIONS.
  - 3) SUPPLY INCLUDES TOOLS AND SPARE AS PER RDSO SPECIFICATIONS.
  - 4) SCOPE OF SUPPLY, INSTALLATION & COMMISSIONING SHALL BE AS PER RDSO LETTER NO. STS/E/IPS/GEN/ DT. 03.04.08 EXCEPT SUPPLY OF 12C, 1.5 Sq. mm SIGNALLING CABLE FOR CONNECTING IPS TO STATUS MONITORING PANEL WHICH WILL BE SUPPLIED BY RAILWAY FREE OF COST.

DRAWN BY <i>Arav</i> 22.7.17	CHECKED BY <i>[Signature]</i> 22.7.17	CHECKED BY <i>[Signature]</i> 26/7/17	APPROVED BY DT: <i>[Signature]</i> 28/7/17	WEST CENTRAL RAILWAY SIGNAL & TELECOMMUNICATIONS
SSE/D	ESTE/SIG	Dy.C.S.T.E.(SIG)	CSE	IPS FOR I.B.S. WITHOUT AFTC FOR RE / NON RE AREA
				DRG. NO. WCR/N-HQ/IPS/IBS/2017/01