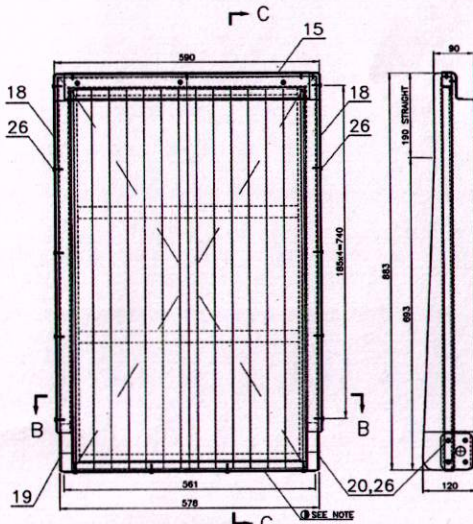
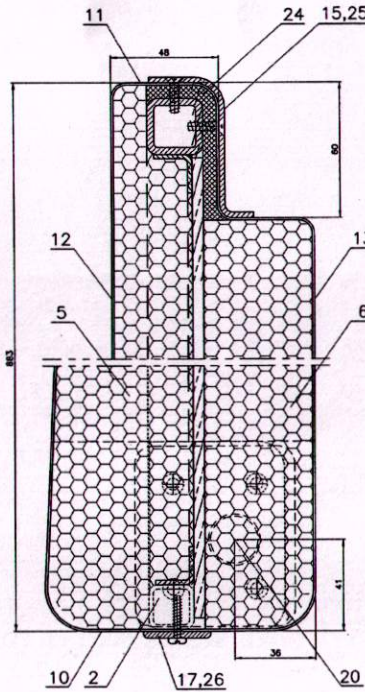
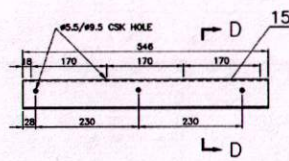
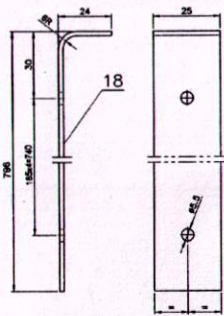
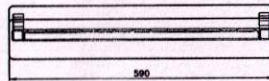


| | | | | |
|-----|----------------------|---|----------------|------------|
| ▽ | ROUGH MACHINED | ④ | ROUGH CLEANING | ALTERATION |
| ▽▽ | FINISH MACHINED | | | |
| ▽▽▽ | FINE FINISH MACHINED | | | |



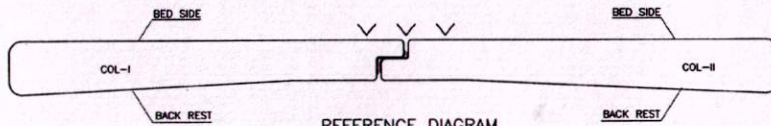
RIGHT SIDE-COL-II



SECTION-CC

SECTION-DD

| NO OF ASSYS. | REID. | PER COACH |
|---------------|-------|-----------|
| TYPE OF COACH | COL-I | COL-II |
| SON | 9 | 9 |



REFERENCE DIAGRAM

NOTE:

- ITEM-25 CSK. SCREW LENGTH SHALL NOT EXCEED THE SPECIFIED DIMENSION MENTIONED IN THE DRG.
- FELT SHALL BE PASTED TO FRAME WITH NON FLAMMABLE SOLVENT BASED ADHESIVE TO ICF/MD/SPEC.-093.
- BEFORE TRIMMING FRAME SHALL BE PAINTED WITH GLOSSY FINISH ENAMEL OF SMOKE GRAY TO SHADE NO.692 OF IS5-2002.
- ITEM-14 TO 20 SHALL BE PAINTED WITH GLOSSY FINISH ENAMEL OF SMOKE GRAY TO SHADE NO.692 OF IS5-2002.
- ITEM-14 & 15 IN COL-I & II BENDING RADIUS SHOULD BE MODIFIED TO SUIT THE LOCATION REQUIRED.
- METALLIC NAME PLATE OF THE MANUFACTURER WITH YEAR OF MANUFACTURE TO SIZE NOT MORE THAN 25x50mm SHALL BE GLUED WITH WATER PROOF ADHESIVE AND SCREWED AT LOCATIONS SHOWN IN THE DRG.
- ONE SET OF BACK REST COMPLETE SHALL BE SUBMITTED TO DESIGN APPROVAL (ONLY FOR FIRST PROTOTYPE) BEFORE TAKING UP BULK MANUFACTURE.
- COL-I & II BED SIDE SHALL BE MAINTAINED IN LINE AS SHOWN IN REF. DIAGRAM

| NO | DESCRIPTION & DIMENSION | ITEM | REF.DWG | MAT. & SPECN | WEIGHT/UNIT | REMARKS |
|----|---------------------------|-------------|---------|--------------|-------------|---------------------|
| 14 | 14 PAN HD TAP SCREW | ST4.8x19F | 26 | IS:7173-89 | | BRIGHT ZINC PLATING |
| 15 | 15 CSK. HD. TAP SCREW | ST 4.2x18F | 25 | IS:7170-89 | | BRIGHT ZINC PLATING |
| 1 | 1 TOP FELT | 6x81x590 | 24 | | | |
| 1 | 1 TOP FELT | 6x105x590 | 23 | IS:1719-88 | | MEDIUM |
| 2 | 2 SIDE FELT | 6x25x605 | 22 | IS:1719-88 | Tab-1 | |
| 2 | 2 SIDE FELT | 6x25x815 | 21 | | | |
| 1 | 1 WEARING PLATE | 2x70x80 | 20 | IS:913-2008 | | |
| 1 | 1 WEARING PLATE | 2x70x80 | 19 | IS:913-2008 | | |
| 2 | 2 FLAT MOULDING | L=815 | 18 | | | |
| 1 | 1 FLAT MOULDING | L=561 | 17 | T-4-4-004 | | |
| 2 | 2 FLAT MOULDING | L=754 | 16 | | | |
| 1 | 1 Z-MOULDING | 2.5x87x546 | 15 | IS:737-88 | | |
| 1 | 1 Z-MOULDING | 2.5x105x546 | 14 | IS:737-88 | | |
| 1 | 1 UPHOLSTERY BED | 650x940 | 13 | IS:1000-92 | | |
| 1 | 1 UPHOLSTERY B/REST | 650x655 | 12 | | | |
| 1 | 1 UPHOLSTERY TOP | 180x650 | 11 | | | |
| 1 | 1 UPHOLSTERY BOTTOM | 116x650 | 10 | RDSO/2006/ | | COLOR CODE SAMPLE |
| 2 | 2 UPHOLSTERY SIDE | 175x632 | 9 | CG07 | | No. ALMCC-03 |
| 1 | 1 UPHOLSTERY BED | 650x652 | 8 | | | |
| 1 | 1 UPHOLSTERY B/REST | 650x680 | 7 | | | |
| 1 | 1 CUSHION FOR LOWER BERTH | | 6 | | | ITEM-14 |
| 1 | 1 CUSHION FOR LOWER BERTH | | 5 | | | ITEM-13 |
| 1 | 1 CUSHION FOR LOWER BERTH | | 4 | SON | | ITEM-12 |
| 1 | 1 CUSHION FOR BACK REST | | 3 | IS-1-610 | | ITEM-11 |
| 1 | 1 BACKREST FRAME | | 2 | ICF/SK | | |
| 1 | 1 BACKREST FRAME | | 1 | ICF/SK | | |

NO OFF GROUP - 6-1- SEATS AND BERTHS

DESCRIPTION: BED CUM BACK REST COMPLETE LEFT AND RIGHT (WITH OUT COMPRESD PLY)

SCALE: 1:2.5

DATE: 10-2014

INDIAN RAILWAY STANDARDS

SHEET 2 OF 2

ICF/SK3-6-1-081