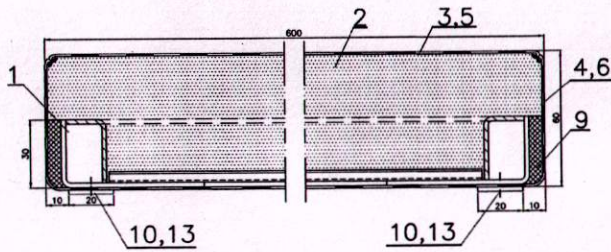
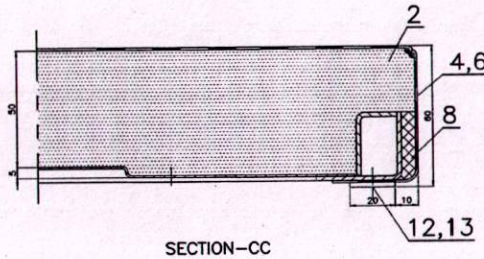
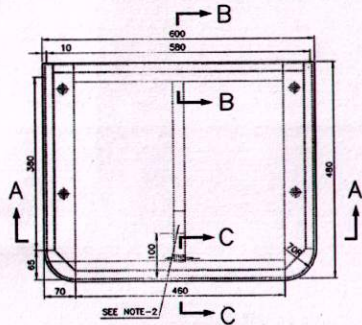
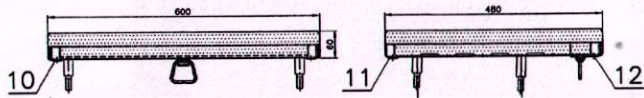


▽ ROUGH MACHINED	(□) ROUGH CLEANING	ALTERATIONS
▽▽ FINISH MACHINED		
▽▽▽ FINE FINISH MACHINED		



SECTION-AA

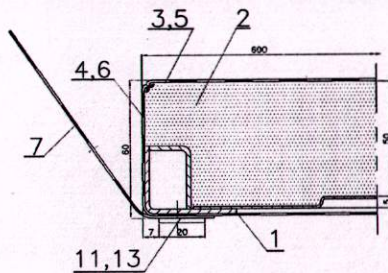
480 FOR ITEM-12	
580 FOR ITEM-11	
380 FOR ITEM-10	

20	170x2=340 FOR ITEM-10
20	180x3=540 FOR ITEM-11
20	210x2=420 FOR ITEM-12



NOTE:

1. UPHOLSTERY (ITEM-4) SHALL BE PASTED TO THE SEAT FRAME WITH NON FLAMMABLE SOLVENT BASED ADHESIVE TO ICF/MO/SPEC--093.
2. METALLIC NAME PLATE OF THE MANUFACTURER WITH MONTH & YEAR OF MANUFACTURE OF SIZE NOT MORE THAN 25x50mm SHALL BE GLUED WITH WATER PROOF ADHESIVE AND SCRIBED AS SHOWN IN THE DRG.
3. ITEMS-10,11,12 SHALL BE PAINTED WITH RED OXIDE ZINC CHROMATE PRIMER TO SPEC. 2074-92 AND SECOND COAT OF ENAMEL PAINT OF GLOSSY FINISH SMOKE GRAY TO SHADE NO.692 OF IS-5-2007.
4. FIBROGLASS WOVEN CLOTH AS PER IS-13126(PART-1)1991 HMMWG MINIMUM DENSITY OF 200-5gm/sq.m AS PER WARPY NO.20 OF TAB-1 WITH BREAKING STRENGTH WARP & WEFT 220 N/cm WIDTH MIN. OR ALTERNATE FABRIC MADE OUT OF FLAME RESISTANT FIBRE SHALL BE PROVIDED ALL AROUND PU FOAM DULY SOFTEN NEATLY WITHOUT ANY WRINKLES INCLUDING BETWEEN UPHOLSTERY AND COMPREG PLYWOOD AS A FIRE PREVENTION MEASURE.
5. FIBRE GLASS WOVEN CLOTH NEED NOT BE PROVIDED WHILE USING DENSIFIED THERMAL BONDED BLOCKS AS CUSHIONING MATERIAL.
6. BEFORE TRIMMING ITEM-1 SHALL BE PAINTED WITH GLOSSY FINISH ENAMEL OF SMOKE GRAY TO SHADE NO.692 IS-5-2007.



SECTION-BB

NO. OF ASSY. REQD. PER COACH	
TYPE OF COACH	COL-1 COL-2
SCM	18 -
WGACCH	- 16

NO. OF	DESCRIPTION AND DIMENSIONS	ITEM	REF. DRG.	MATL. & SPEC.	WEIGHT/LIMIT	REMARKS
13,15	PAIR HD. TAP SCREW ST 4.2x13-F	3	IS:7173-89			BRIGHT ZINC PLATING
1	1	1	IS:511-2008 CR-4			
1	1	1	IS:511-2008 CR-4			
2	2	2	IS:511-2008 CR-4			
2	2	2	IS:1079-2009 SCM			MEDIUM
1	1	1	IS:1079-2009 SCM			MEDIUM
1	1	1	RD50/2008/COAT			COLOUR CODE SAMPLE No. ALAC-01
1	1	1	RD50/2008/COAT			COLOUR CODE SAMPLE No. ALAC-01
1	1	1	RD50/2008/COAT			COLOUR CODE SAMPLE No. ALAC-01
1	1	1	RD50/2008/COAT			COLOUR CODE SAMPLE No. ALAC-01
1	1	1	RD50/2008/COAT			COLOUR CODE SAMPLE No. ALAC-03
1	1	1	RD50/2008/COAT			COLOUR CODE SAMPLE No. ALAC-03
1	1	1	SCM 8-1=81D			ITEM-4
1	1	1	SCM 8-1=80B			COL-1
NO. OF GROUP: 6-1 SEATS & BERTHS						
SUPERSEDED BY:						
SCALE: 1:5 (D)						
1:1 ALT						
1:1 CAD						
SHEET 1 OF 1						
INTEGRAL COACH FACTORY CHENNAI-38						

SINGLE SEAT COMPLETE

CAD FILE: MD-CAD-329/E-1-080--00.DWG
DATA CODE NO: 329
INDIAN RAILWAY STANDARDS