

SECTION-BB

SECTION-AA

SECTION-AA

DETAIL AT -X

- NOTE**
- UPHOLSTERY SHALL BE PASTED TO COMPRES PLYWOOD BASE WITH NON FLAMMABLE SOLVENT BASED ADHESIVE TO REF/IND/ SPEC.-003
  - ITEMS 9&13 TO BE WELDED TOGETHER.
  - METALIC NAME PLATE OF THE MANUFACTURER WITH YEAR OF MANUFACTURE TO BE NOT MORE THAN 2500 SHALL BE SCREWED AS SHOWN IN THE DRG.
  - COL-1&II WITH S.S FRAME FOR URB COACHES.
  - COL-1&II WITH U.S FRAME FOR CONVENTIONAL COACHES.

NO OF ASSEMBLERS REQUIRED PER COACH	TYPE OF COACH	QTY	SMO	S/LR	LSRD
18	COL-I	18	12	4	14
18	COL-II	18	12	4	13
18	COL-III	18	12	4	14
18	COL-IV	18	12	4	13

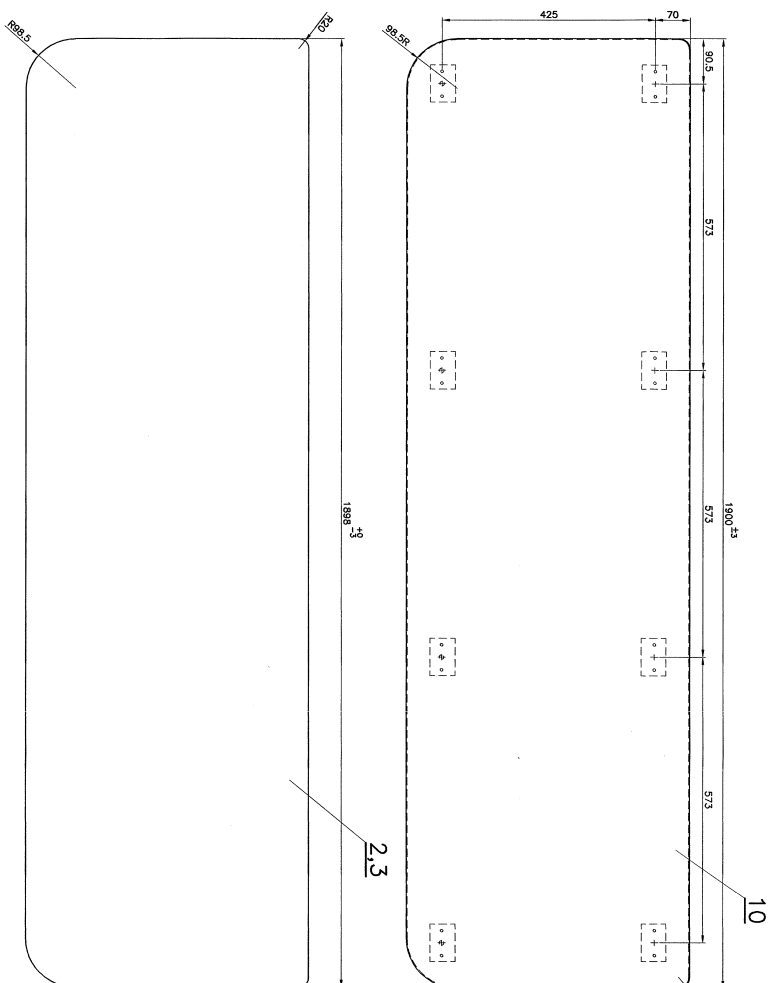
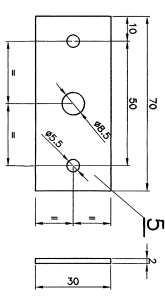
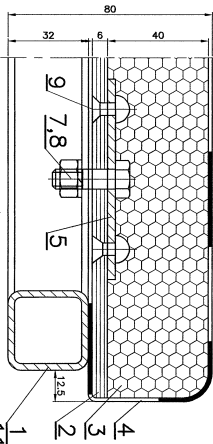
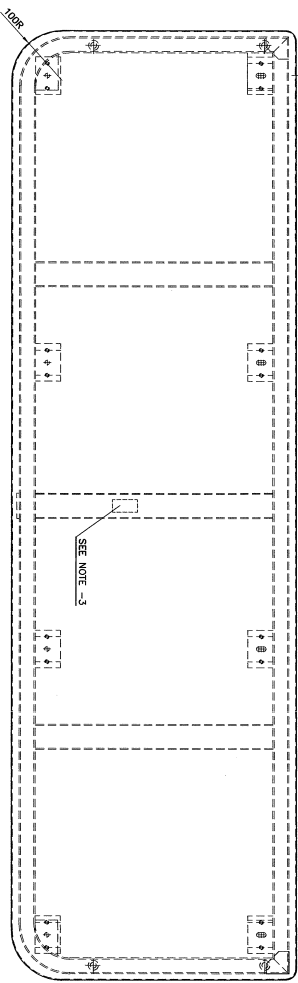
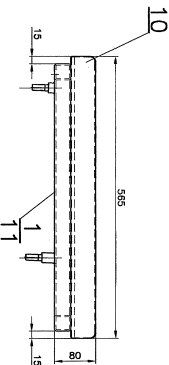
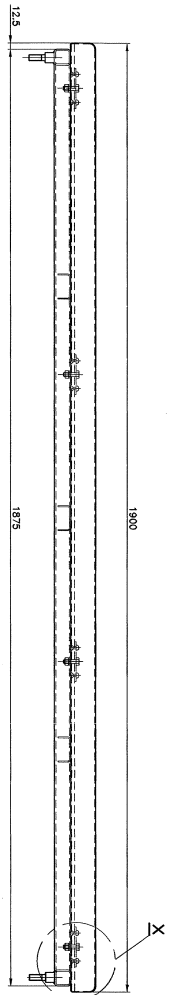
NO	DESCRIPTION & DIMENSIONS	ITEM REF. DRWG.	MAT. SPEC.	WEIGHT/JUNT	REMARKS
15	BACK REST FRAME (SINGLE)	6-S-2009			COL-III
14	BACK REST FRAME	6-1-2009			COL-I
13	FRONT PLATE	2-30-70	ASS-104		
12	CSK. HD RIVET	6&X16	SS304/7-88		
11	SPRING LOCK WASHER	M8	SS304/3-94		
10	HEX. NUT	M8-6	SS304/3-94		
9	HEX. HD SCREW	M8X25-4.8	SS304/3-94		
8	UPHOLSTERY	505&4&5	ROSG/70599/50-07		SAMPLE NO. 1000-10
7	CUSHION	25&42&5&2	ROSG/2009/ROSG-0607		SAMPLE NO. 1000-10
6	CUSHION	25&42&5&2	ROSG-0607		
5	COMPRES PLYWOOD	6&X25&5&2	ROSG-2-407		
4	COMPRES PLYWOOD	6&5&2&X1912	ROSG-2-9407		
3	BACK REST FRAME (SINGLE)	6-1-2009			COL-III
2	BACK REST FRAME	6-1-2009			COL-I
1	BACK REST FRAME	6-1-2009			COL-I

PER ASSY.	PER ASSY.	PER ASSY.	PER ASSY.
PER ASSY.	PER ASSY.	PER ASSY.	PER ASSY.

CAD FILE	INDIAN RAILWAY STANDARDS	SHEET 1 OF 1	GS 4-6-1-408
DATA CODE NO	INDIAN RAILWAY STANDARDS	SHEET 1 OF 1	GS 4-6-1-408

20-08-2009	0-03-07	20-08-2009
20-08-2009	0-03-07	20-08-2009

1912	FOR ITEM-5
422	FOR ITEM-6



NO. OF ASSEMBLES REQUIRED PER COACH	
TOP OF CS6	SNO S/S LSPD
COL-III	18 12 4 14
COL-III	18 12 4 14

**NOTE**

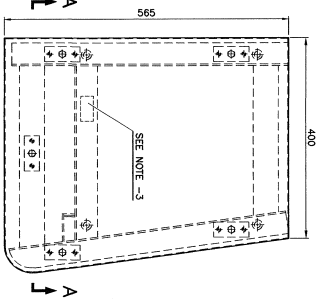
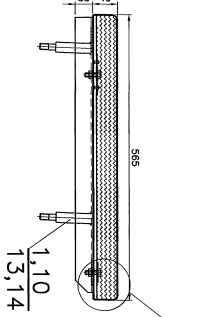
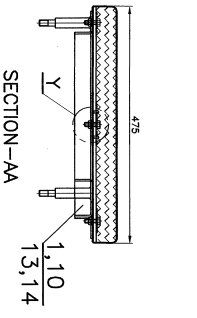
- UPHOLSTERY (ITEM 4) SHALL BE FASTENED TO CORRUGATED PLUMWOOD BASE WITH NON FLAMMABLE SOLVENT BASED ADHESIVE TO 67/WD/SPEC.093.
- ITEMS 5&6 TO BE WELDED TOGETHER.
- METALIC NAME PLATE OF THE MANUFACTURER WITH YEAR OF MANUFACTURE TO SIZE NOT MORE THAN 25x50 SHALL BE SCREWED AS SHOWN IN THE DRG.
- COL-III WITH S/S FRAME FOR LHB COACHES.
- COL-III WITH M/S FRAME FOR CONVENTIONAL COACHES.

NO. OF	DESCRIPTION & DIMENSIONS	ITEM REF.	DIMS.	MAT. SPECIFIC	WEIGHT/LIHT	REMARKS
1	SEAT FRAME	11	6-25x10			COL-I
1	CUSHION COMPLETE	10	8-17x18	IS-3402-37		COL-I
1	CSK. HD RIVET	9	5.5x1.6	IS-2002		
8	SPRING LOCK WASHER	8	IS-3063-94	IS-137/6-(14)		
8	HEX. NUT	7	IS-3063-94	AZ-70		
8	HEX. HD SCREW	6	IS-3063-94	AS-304		
8	FINING PLATE	5	74x2100	RSO/2088/		SAMPLE NO. RSO-2088
1	UPHOLSTERY	4	40x183x1898	RSO-C-9407		RSO-C-9407
1	CUSHION	3	40x183x1898	TYPE-1		
1	COMPRED PLUMWOOD	2	60x183x1898			
1	SEAT FRAME	1	6-125x10			COL-I
1	DESCRIPTION & DIMENSIONS	ITEM REF. <td>DIMS. <td>MAT. SPECIFIC <td>WEIGHT/LIHT <td>REMARKS</td> </td></td></td>	DIMS. <td>MAT. SPECIFIC <td>WEIGHT/LIHT <td>REMARKS</td> </td></td>	MAT. SPECIFIC <td>WEIGHT/LIHT <td>REMARKS</td> </td>	WEIGHT/LIHT <td>REMARKS</td>	REMARKS
NO. OF	GROUP: 6-1 SEATS & BERTH					

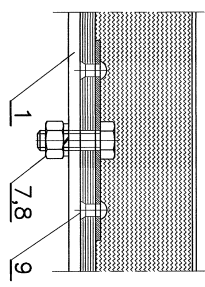
**FOUR SEATER COMPLETE WITH CUSHION**

GROUP FILE NO.	MD-200-2853-6-1-ASSEMBLING
DATA CODE NO.	285
INDIAN RAILWAY STANDARDS	
SHEET	1 OF 1
GS 4-6-1-406	

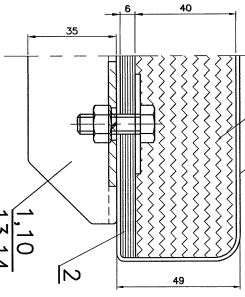
DATE OF ISSUANCE	20-08-2009
DATE OF REVISION	10-03-07
SCALE	AS SHOWN
APPROVED BY	
DESIGNED BY	
CHECKED BY	
DATE	



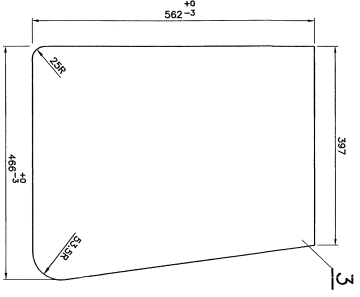
COL-III AS DRAWN  
COL-IV OPOSITE



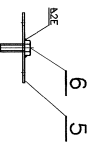
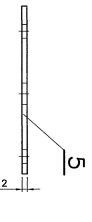
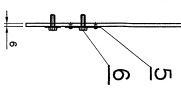
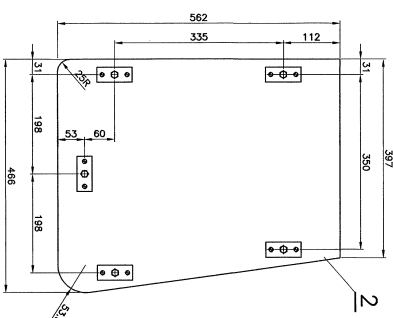
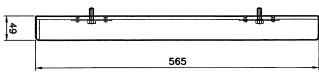
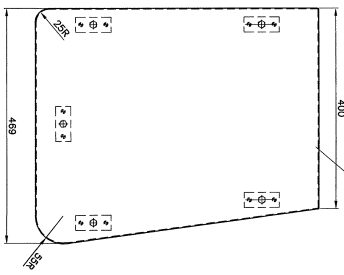
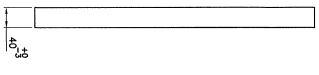
DETAIL AT -Y



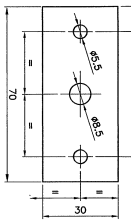
DETAIL AT -X



1.1 AS DRAWN  
1.2 OPOSITE



NO. OF ASSEMBLIES REQUIRED PER COACH	TYPE OF COACH	SHD	SUR	SLR	SLRD
9	COL-III	6	2	7	
9	COL-IV	6	2	7	
9	COL-V	6	2	7	
9	COL-VI	6	2	7	



NOTE

- UPHOLSTERY (ITEM-4) SHALL BE PASTED TO CORRUGATED PLYWOOD BASE WITH APPROVED BRAND OF FIRE PROOF ADHESIVE.
- TRIMMING SHALL BE WELDED TOGETHER.
- METALIC NAME PLATE OF THE MANUFACTURER WHAT YEAR OF MANUFACTURE TO SIZE NOT MORE THAN 25x50 SHALL BE SCREWED AS SHOWN IN THE DRG.
- COL-III WITH S.S FRAME FOR LHB COACHES.
- COL-IV WITH M.S FRAME FOR CONVENTIONAL COACHES.

REV	DATE	DESCRIPTION
01	03/2009	REV. FOR ITR-1810 ALD FROM GS-4-1-1003 TO ITR-1810 ALD WITH 1810 ALD QTY FOR LSRD ADDED WITH ASY DRG NO. ITRSD-6-1-1001
02	03/2009	REV. FOR ITR-2 ALD FROM GS-4-1-1003 TO ITR-2 ALD WITH 1810 ALD QTY FOR LSRD ADDED WITH ASY DRG NO. ITRSD-6-1-1001
03	09/2009	REV. FOR ITR-1810 ALD FROM GS-4-1-1003 TO ITR-1810 ALD WITH 1810 ALD QTY FOR LSRD ADDED WITH ASY DRG NO. ITRSD-6-1-1001

NO. OF	DESCRIPTION & DIMENSIONS	ITEM REF. DRG. NO.	MAT. SPEC.	REMARKS
1	SEAT FRAME	6-1-300	AS-304	COL-III
1	SEAT FRAME	6-1-300	AS-304	COL-III
1	SEAT FRAME	6-1-300	AS-304	COL-III
1	CUSHION COMPLETE	6-5-307		COL-III
1	CUSHION COMPLETE	6-5-307		COL-III
1	SEAT FRAME	6-1-300		COL-III
10	SEAT FRAME	6-1-300		COL-III
9	CSK. HD RIVET	SI740-17		
5	SPRING LOCK WASHER	SI156(16-14)		
5	HEX. NUT	SI138(16-14)		
5	HEX. HD SCREW	MA25-4.6		
5	FRING PLATE	230X70		
1	UPHOLSTERY	600X870		
1	CUSHION	40x46x52		
1	CORRUGATED PLYWOOD	6x46x52		
1	SEAT FRAME	6-1-300		

GROUP	VI	VII	VIII	IX	X	XI	XII
PER ASSY.							
PER ASSY.							
PER ASSY.							
PER ASSY.							
PER ASSY.							
PER ASSY.							

CAD FILE	DATE OF LAST REV.	DATE OF PREP. REV.	SHEET/TAPE
INDIAN RAILWAY STANDARDS	10-05-07		1/5

GROUP	VI	VII	VIII	IX	X	XI	XII
PER ASSY.							
PER ASSY.							
PER ASSY.							
PER ASSY.							
PER ASSY.							
PER ASSY.							

GROUP	VI	VII	VIII	IX	X	XI	XII
PER ASSY.							
PER ASSY.							
PER ASSY.							
PER ASSY.							
PER ASSY.							
PER ASSY.							

CAD FILE	DATE OF LAST REV.	DATE OF PREP. REV.	SHEET/TAPE
INDIAN RAILWAY STANDARDS	10-05-07		1/5

GROUP	VI	VII	VIII	IX	X	XI	XII
PER ASSY.							
PER ASSY.							
PER ASSY.							
PER ASSY.							
PER ASSY.							
PER ASSY.							