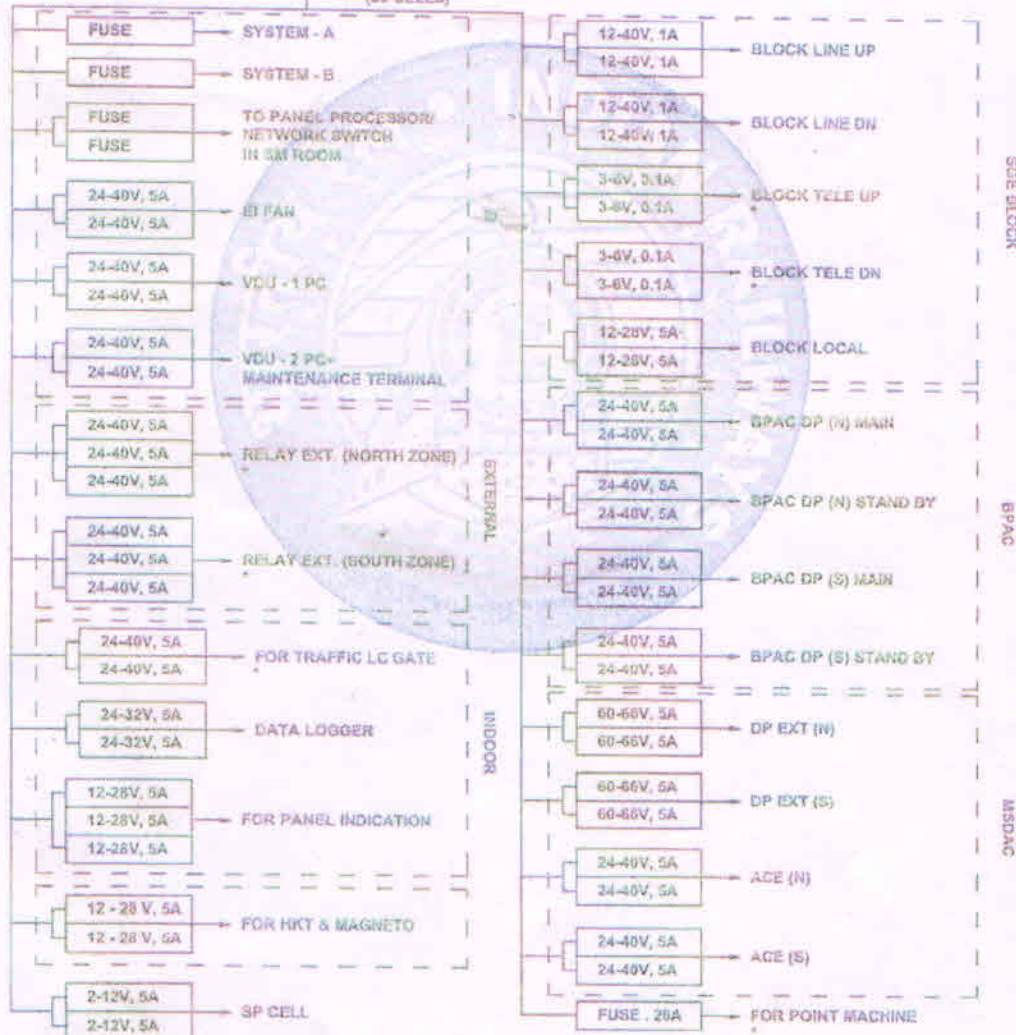
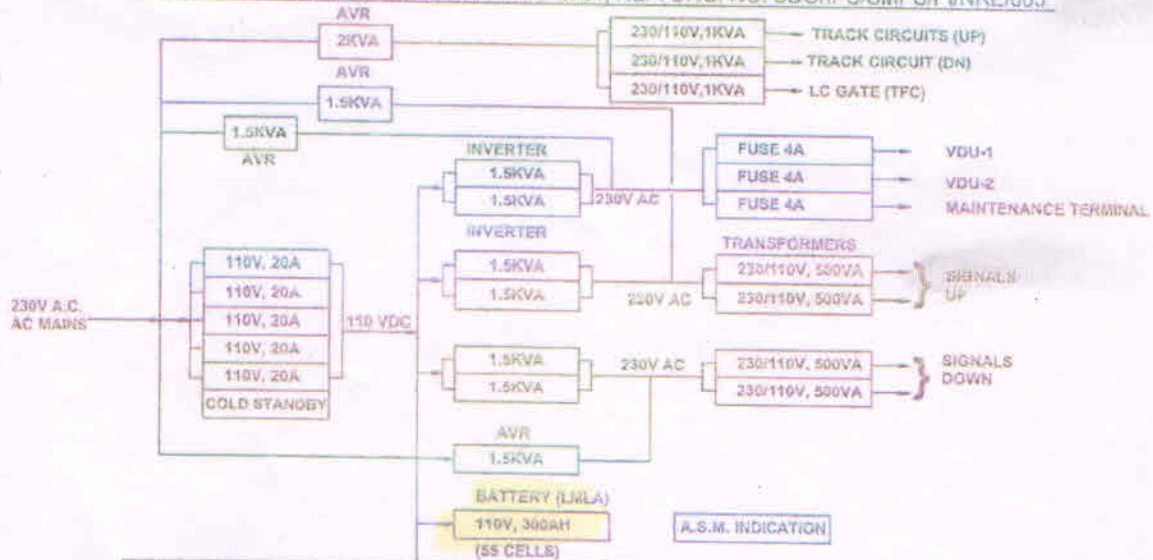


IPS FOR UP TO 6 LINES WITHOUT AFTC NON RE / RE AREA FOR EI DOUBLE LINE AS PER RDSO SPN NO. RDSO/SPN/165/ 2004, REF: DRG. NO. SDO/IPS/SMPS/PV/NRE/003



NOTE

- APPROXIMATE CABLE DISTANCE BETWEEN IPS ROOM & BATTERY BANK 10 METRS.
- SUPPLY INCLUDES SPOS AND FIXING ARRANGEMENT AS PER RDSO SPECIFICATIONS.
- SUPPLY INCLUDES TOOLS AND SPARE AS PER RDSO SPECIFICATIONS.
- SCOPE OF SUPPLY, INSTALLATION & COMMISSIONING SHALL BE AS PER RDSO LETTER NO. STS/ENR/11/2004 (M) EXCEPT SUPPLY OF 12C, 1.55q.m.m SIGNALING CABLE FOR CONNECTIONS IPS TO STATUS MONITORING PANEL WHICH IS SUPPLIED BY RAILWAY FREE OF COST.

*** EXTERNAL SUPPLY**

DRAWN BY				CHECKED BY				APPROVED BY				WEST CENTRAL RAILWAY	
DATE				DATE				DATE				SIGNAL & TELECOMMUNICATIONS	
11/12/13				11/12/13				11/12/13				IPS FOR UP TO 6 LINES WITHOUT AFTC FOR RE / NON RE AREA FOR EI/DOUBLE LINE	
SSEO				ESTE/SIG				DY CATER/SIG				GSE	
												DRG. NO. WCR/N-HQ/SPN/165/2004	

Amir Chand

उप मुख्य सामग्री प्रबंधक/सा. एवं नि.
Dy Chief Materials Manager/G&C
पश्चिम मध्य रेल, जबलपुर
West Central Railway, Jabalpur