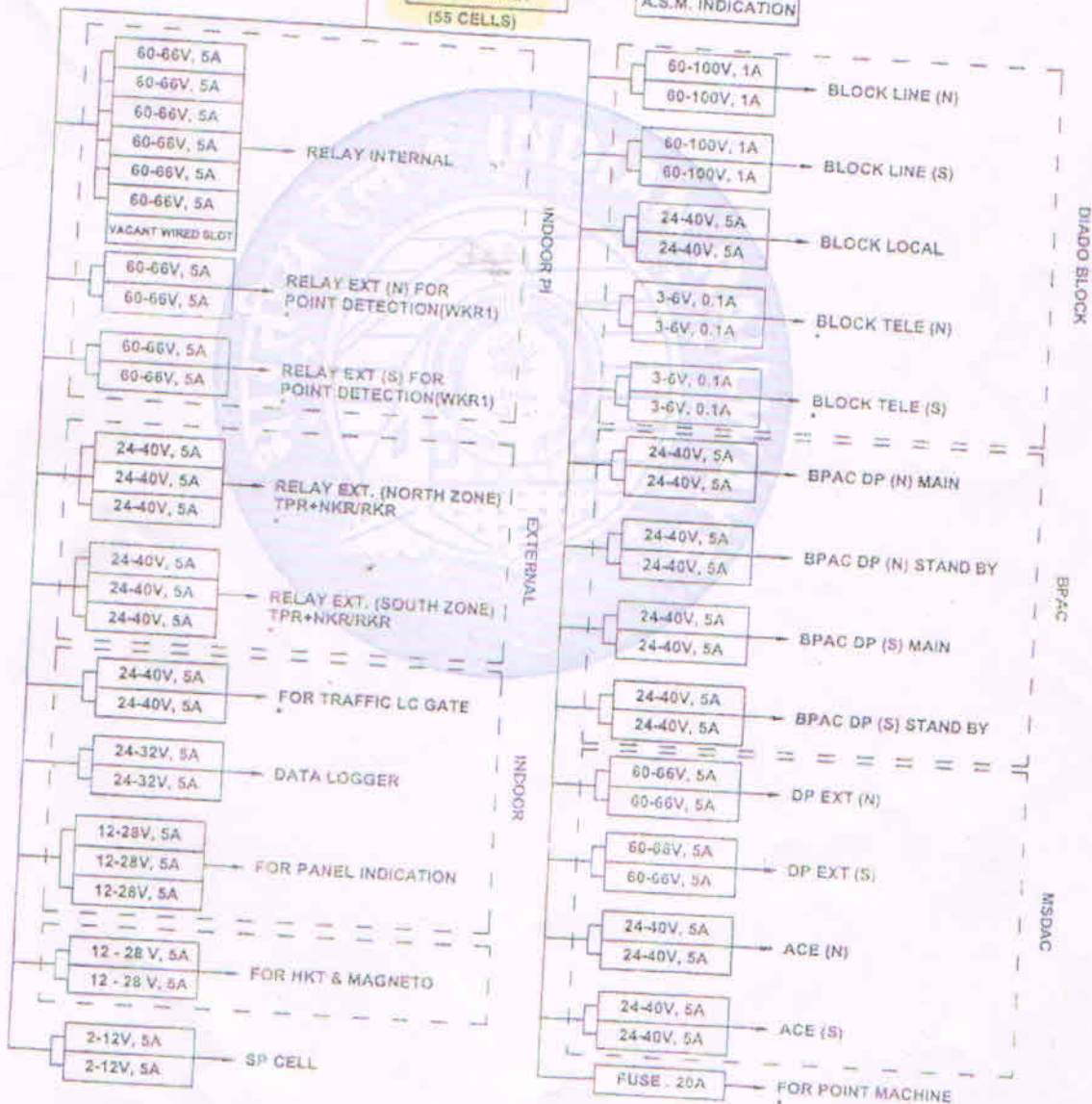
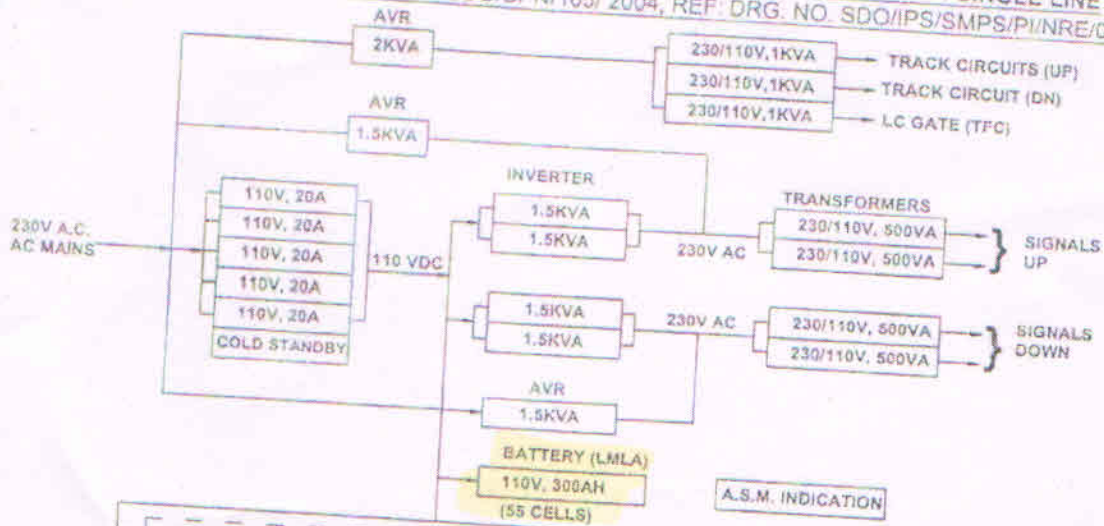


IPS FOR UP TO 6 LINES WITHOUT AFTC NON RE / RE AREA FOR PI SINGLE LINE AS PER RDSO SPN NO. RDSO/SPN/165/ 2004, REF: DRG. NO. SDO/IPS/SMPS/PI/NRE/003



NOTE  
APPROXIMATE CABLE DISTANCE BETWEEN IPS ROOM & BATTERY  
LINK 10 MTRS.  
SUPPLY INCLUDES SPDS AND FIXING ARRANGEMENT AS PER RDSO SPECIFICATIONS.  
SUPPLY INCLUDES TOOLS AND SPARE AS PER RDSO SPECIFICATIONS.  
SCOPE OF SUPPLY, INSTALLATION & COMMISSIONING SHALL BE AS PER RDSO LETTER NO. STS/IPS/SPN/165/2004 EXCEPT SUPPLY OF 1.5Sq.mmm SIGNALING CABLE FOR CONNECTIONS IPS TO STATUS MONITORING PANEL WILL BE SUPPLIED BY THE USER AT HIS COST.

Dy Chief Materials Manager/G&C  
पश्चिम मध्य रेल, जबलपुर  
West Central Railway, Jabalpur

* EXTERNAL SUPPLY				WEST CENTRAL RAILWAY	
DRAWN BY	CHECKED BY	CHECKED BY	APPROVED BY	SIGNAL & TELECOMMUNICATIONS	
SSE/D	ESTE/SIG	DY CSTE/SIG	CSE	IPS FOR UP TO 6 LINES WITHOUT AFTC FOR RE / NON RE AREA FOR PI SINGLE LINE	
				DRG. NO. WCR/N-IQ/IPS-6LINE/165	