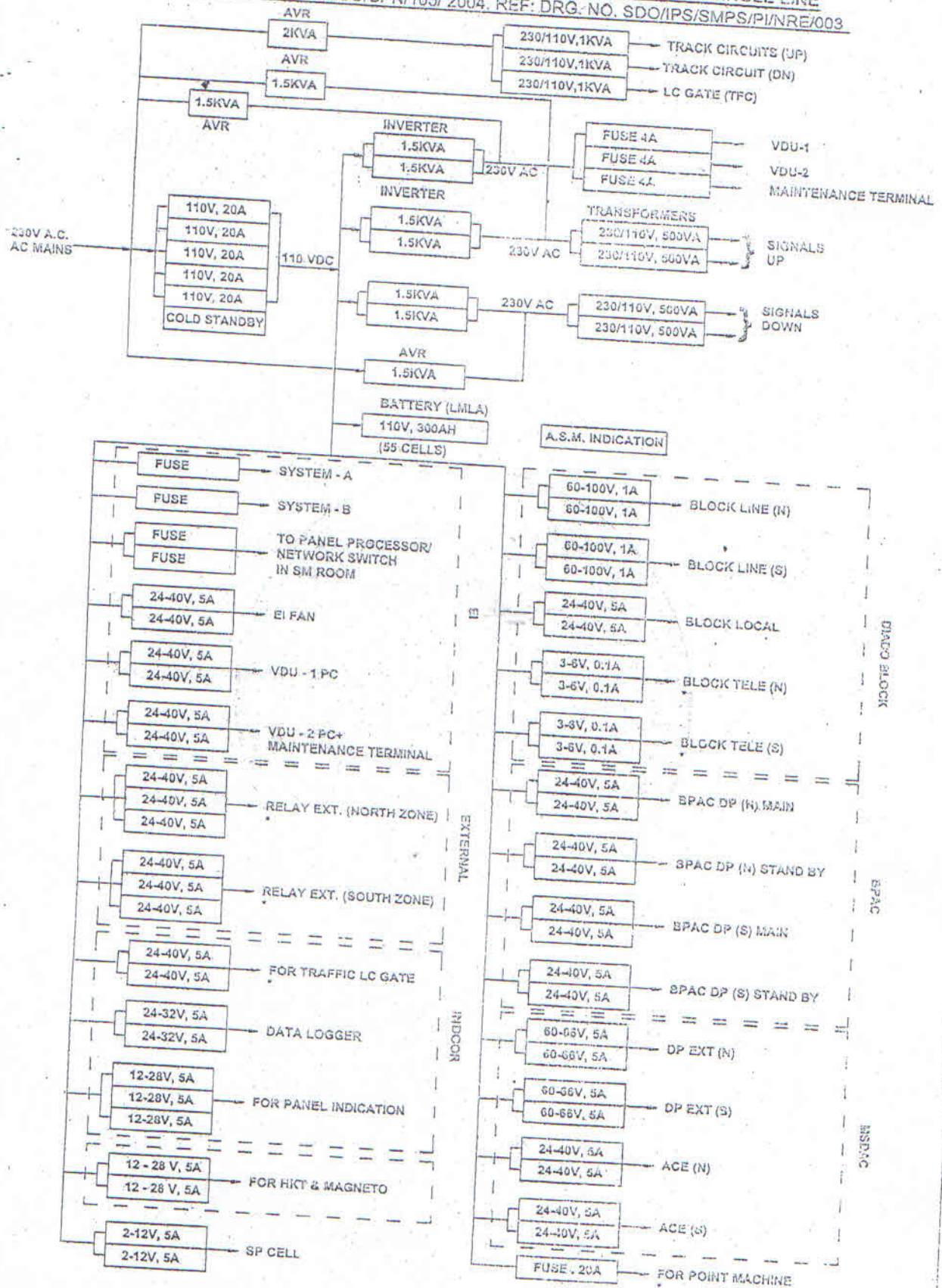


PL NO. 5650 NS04

IPS FOR UP TO 6 LINES WITHOUT AFTC NON RE / RE AREA FOR EI SINGLE LINE
AS PER RDSO SPN NO. RDSO/SPN/165/ 2004. REF: DRG. NO. SDO/IPS/SMPS/PI/NRE/003



- NOTE
- 1 APPROXIMATE CABLE DISTANCE BETWEEN IPS ROOM & BATTERY BANK 10 MTRS.
 - 2 SUPPLY INCLUDES SPDS AND FIXING ARRANGEMENT AS PER RDSO SPECIFICATIONS.
 - 3 SUPPLY INCLUDES TOOLS AND SPARE AS PER RDSO SPECIFICATIONS.
 - 4 SCOPE OF SUPPLY, INSTALLATION & COMMISSIONING SHALL BE AS PER RDSO LETTER NO. STS/E/IPS/GEN./DT.03.04.08 EXCEPT SUPPLY OF 12C, 1.5sq.mm SIGNALING CABLE FOR CONNECTIONING IPS TO STATUS MONITORING PANEL WILL BE SUPPLIED BY RAILWAY FREE OF COST.

Dy Chief Materials Manager/G&C
पश्चिम मध्य रेल, जबलपुर
West Central Railway, Jabalpur

EXTERNAL SUPPLY				WEST CENTRAL RAILWAY	
DRAWN BY	CHECKER BY	CHECKED BY	APPROVED BY	SIGNAL & TELECOMMUNICATIONS	
<i>[Signature]</i>	<i>[Signature]</i>	<i>[Signature]</i>	<i>[Signature]</i>	IPS FOR UP TO 6 LINES WITHOUT AFTC FOR RE / NON RE AREA FOR SINGLE LINE	
SSR/ID	ESTE/SIG	TDY/CEV/SSR	CAF	DRG. NO. WCR/STG/IPS/GEN/003	