

CABLE SIZE

CABLE SIZE	SYMBOL	SPECIFICATION
1.5 SQ.MM	---	TIN WALDED CABLES TIN BRED. SPEC. NO. FLU/SR/SC/EG/0019 (GATED)
4 SQ.MM	---	
10 SQ.MM	---	

ABBREVIATION AND LOAD CHART

CODE	DESCRIPTION	MAX. WATT (W)	L1 QTY	L1 LOAD(W)	L2 QTY	L2 LOAD(W)	F QTY	F LOAD(W)	MCS QTY	MCS LOAD(W)
FL	COMPARTMENT LIGHT	18	4	72	4	72	---	---	---	---
DL	DOORWAY LIGHT	18	4	72	---	---	---	---	---	---
LL	LAVATORY LIGHT	11	2	22	---	---	---	---	---	---
LL	LAVATORY LIGHT	2x11	1	22	---	---	---	---	---	---
EEL	EM. EQPT. ROOM LIGHT	11	---	---	1	11	---	---	---	---
FL	LUGGAGE ROOM LIGHT	2x11	2	44	2	44	---	---	---	---
F	BLDC FAN 400mm SHEEP	32	---	---	---	---	11	352	---	---
CS	MOBILE CH. SCK. 110V DC 3-PW	5	---	---	---	---	---	---	8	40
	MAX. LOAD ON INDIVIDUAL CKT (W)		232		127		352		40	
	MAX. LOAD CURRENT ON INDIVIDUAL CKT (A)		2.85		1.15		3.20		0.36	
	TL TAIL LIGHT (2x10W)								20	
	SL SIDE LIGHT (2x25W)								50	
	PAIL PASS ALARM IND. LIGHT (2x6W)								12	
	EL EMERGENCY LIGHT (3x10W)								30	
	BAS BIO-TOILET ANNOUNCEMENT SYSTEM (3x6W)								18	
	CCTV CLOSED CIRCUIT TV SYSTEM								100	
	TOTAL LOAD (W)								981	
	TOTAL LOAD CURRENT (A)								8.91	

NOTE:-

- REFER DRG. NO. SLR3-7-0-303 FOR HARNESS DETAIL FOR ROOF WIRING.
- REFER DRG. NO. SLR3-7-0-304 FOR HARNESS CHART FOR ROOF WIRING.
- IF EMERGENCY FEED IS USED BY A COACH FROM ADJACENT COACH THROUGH EPT, THEN 40A -VE FEED IN CABLE OF THE SCK COACH HAS TO BE REMOVED.
- L2 & F CKT ROW SHOULD BE SWITCHED 'OFF' IN BOTH SCK & HEALTHY COACHES.
- SPM ROW SHOULD BE SWITCHED 'OFF' IN BOTH SCK & HEALTHY COACHES.
- REPEATER LED WILL GLOW WHEN TAIL LAMP IS GLOWING AND WILL TURN 'OFF' WITH ALARM ALARM WHEN MORE THAN 25% OF THE TOTAL LEDS ARE FAILED.

DRAWING MADE AS PER MINUTES OF 26TH MSG MEETING VIDE ROSO LETTER NO. EL/7.1.60/G DT. 11/02/2015, EL/6.9.12/SYSTEM DT. 28.07.2015 & EL/7.1.57/SYSTEM DT. 24.11.2015.

GROUP : 7-0

SCHEMATIC DIAGRAM FOR ROOF WIRING (SLR COACH WITH CENTRALISED FDB)

SUPERSEDED BY: SURESH DESAI

SCALE: S.S.E.

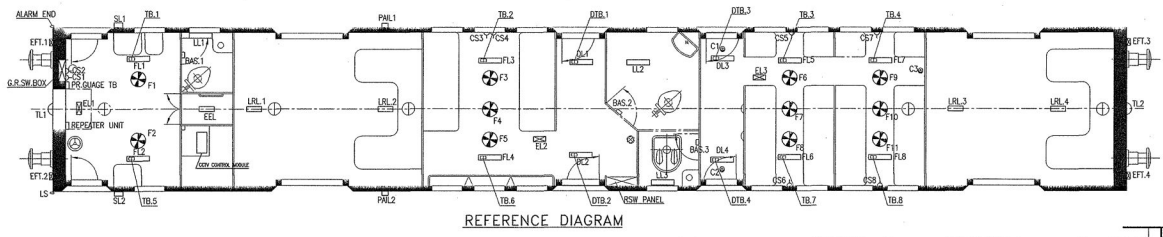
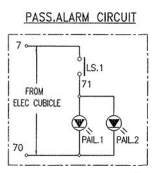
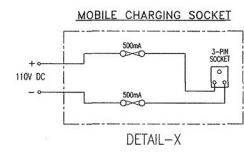
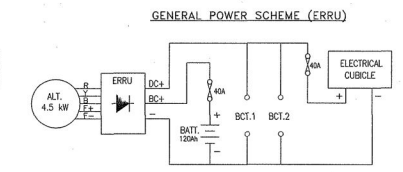
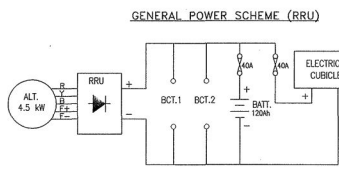
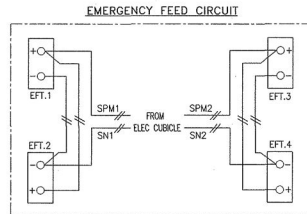
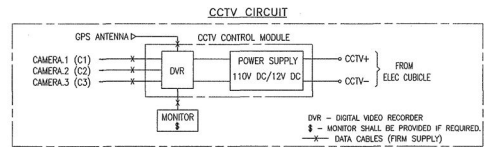
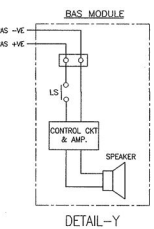
CHD. ALT. DRN. S. Neelakandan

INTEGRAL COACH FACTORY CHENNAI - 38

INDIAN RAILWAYS STANDARDS

SHEET 1 OF 1

SLR3-7-0-302



SLR3-7-0-301	ASSEMBLY DRAWINGS	CAD FILE C:\ED-CAD\284\7-0\302---00.DWG
18.12.2015	DATE OF FIRST ISSUE	DATA CODE NO 284
ALT.	DATE OF LATEST ALT	DY.CEE/D