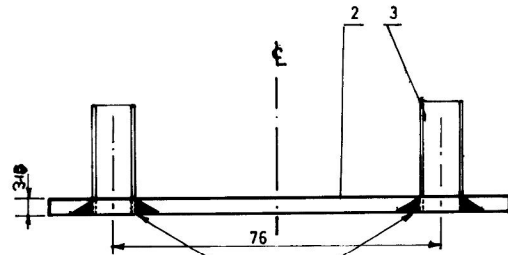
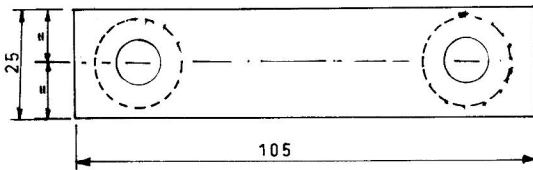


ITEM NO 1



SURFACE TO BE GROUND AFTER WELDING



4	NUT M 10 X	2	IS-1363-78
3	STUD M10X25 LONG	2	IS:1862-75
2	PLATE 105X25X3.16 THK	1	MS IS:1079
1	CLAMP 130X25X 3.16 APPROX	1	M.S.IS:1079
ITEM NO	DESCRIPTION	QTY	MAT & SPEC

DATE	20-10-2023	SCALE	1:1
DRN	Ajay Kumar	REFDRG	
CHKD	...		
APPROVED	...		

**क्लैम्प
CLAMP**
FOR 20mm NB PIPE

CONTROLLED BY

WCR FOR CWM

WEST CENTRAL RAILWAY
COACH REHABILITATION WORKSHOP BHOPAL
DRG NO. C RW/SK-AB.62