

WCR – AN OVERVIEW



Divisions: Jabalpur
Bhopal
Kota

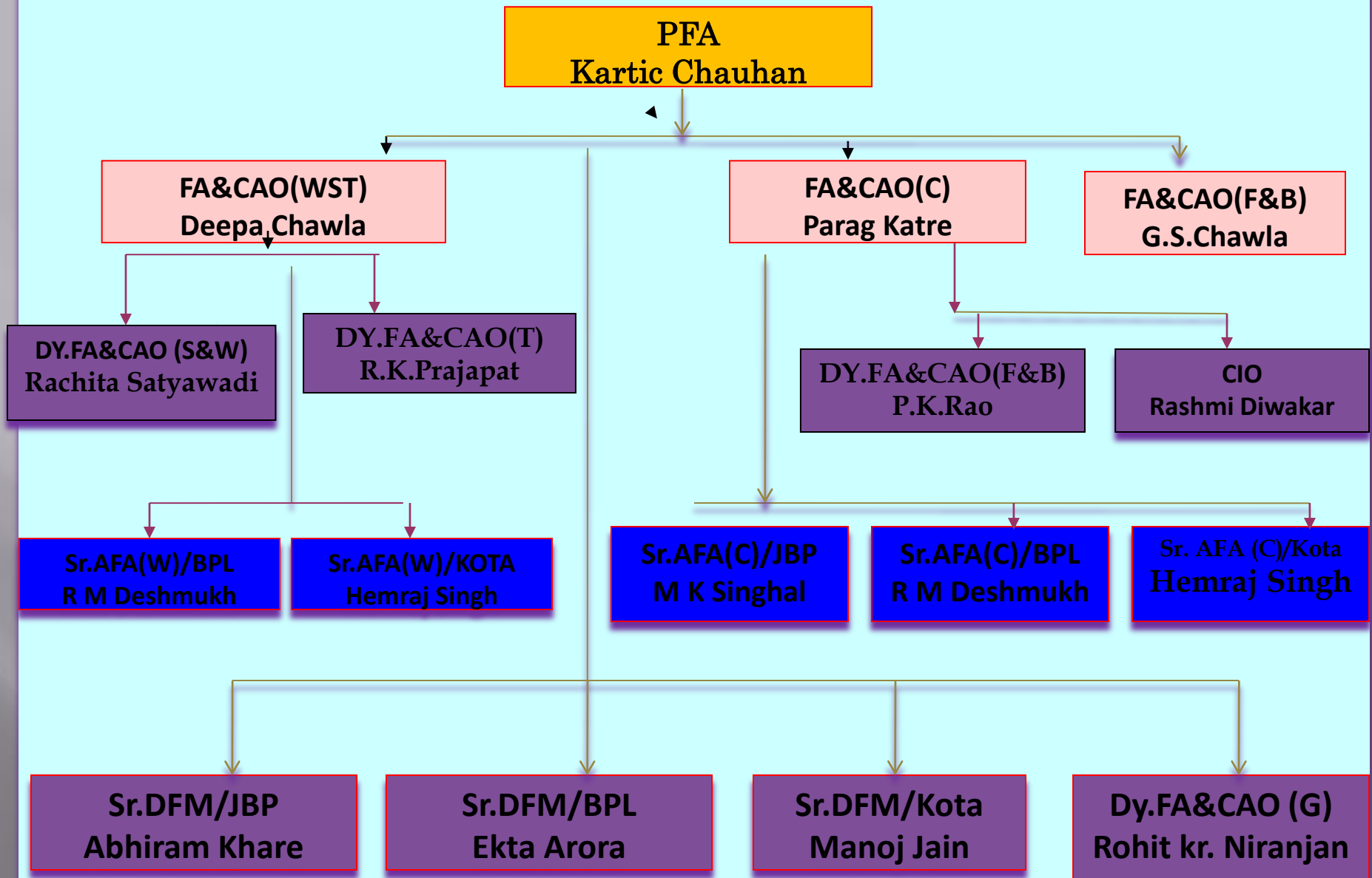
Workshops: Bhopal CRWS
Kota WRS

No. of Stations: 300

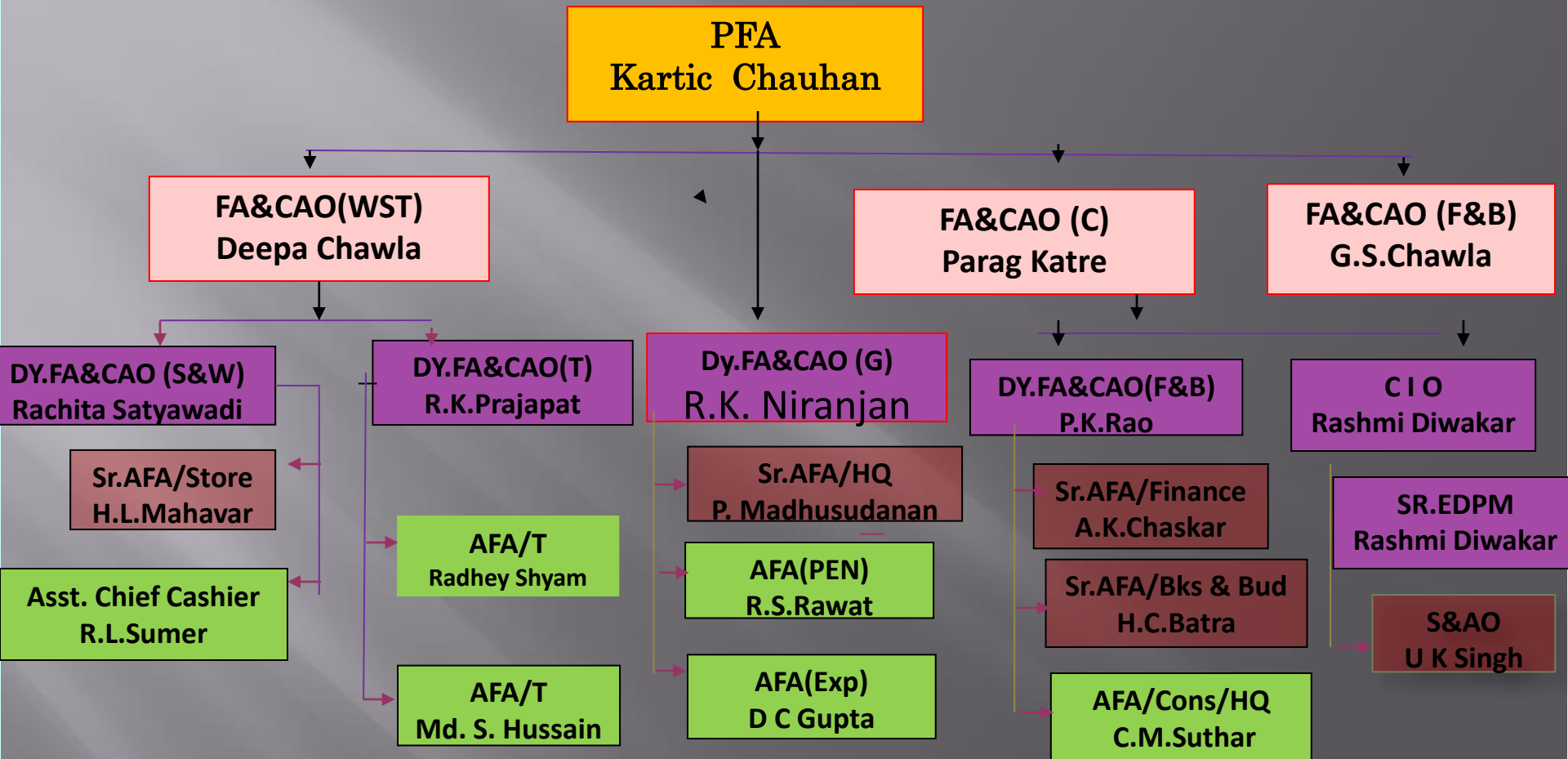
Route KMs : 3003

No. of Officers : Sancd.- 693 Act:-584
No. of Staffs : Sancd.: -65066 Act.: -53694

ORGANISATION CHART OF ACCOUNTS OFFICE WCR-JBP



Organization Chart – PFA HQrs



STAFF STRENGTH OF ACCOUNTS OVER WCR

Category	Sanctioned	On roll	Vacancy
Officers			
SAG/HAG	4	4	0
SG/JAG	13	8	5
SS	18	10	08
JS	15	13	02
Total Officers	50	35	15
Staff			
Sr.SO(A)	172	161	11
Sr.TIA's	49	44	05
Sr.ISA	27	25	02
SSV/SV	27	22	05
AA/JAA/ Acks	469	329	140
EDP	27	17	10
Statistical	21	15	06
Cash & Pay	45	35	10
Total Staff	837	648	189

STAFF STRENGTH OF HEAD QUARTER ACCOUNTS (General Accounts, Traffic Accounts & Stores Accounts)

Unit	Sr.SO			Sr.TIA			Sr. ISA		
	San.	On roll	Vac.	San.	On roll	Vac.	San.	On roll	Vac.
General A/c	44	41	03	00	00	00	00	00	00
Traffic A./c	15	16	-01	49	44	05	00	00	00
Stores A/c	16	15	01	00	00	00	05	04	01
Total	75	72	03	49	44	05	05	04	01

Unit	Sr.SV/SV			AA/JAA/ AC			Total Staff		
	San.	On roll	Vac.	San.	On roll	Vac.	San.	On roll	Vac.
General A/c	00	00	00	75	67	8	162	153	9
Traffic A./c	00	00	00	88	34	54	171	98	73
Stores A/c	03	03	00	35	15	20	67	39	28
Total	03	03	00	198	116	82	400	290	110

Unit wise position of Officers & Staff (Accounts)

	SG/JAG			SS/JS		
	San.	On roll	Vac.	San.	On roll	Vac.
HQ	8	6	2	17	12	5
Divisions, Workshops & Constructions	5	3	2	16	11	5
Total	13	09	4	33	23	10

Unit	SSO			AA/JAA/AC		
	San.	On roll	Vac.	San.	On roll	Vac.
JBP	25	22	3	67	54	13
BPL	21	19	2	65	49	16
KOTA	22	22	00	62	54	08
Workshop	18	15	03	52	39	13
Const.	11	11	00	26	17	09

Position of Pensioner of WCR and year wise Expenditure under Demand No. 13

₹In Crores

Year	No. of Live Pensioner	Actual Exp.
2014-15	62693	1214
2015-16	65060	1337
2016-17	67925	1816
2017-18	70177	2145
2018-19	73589(upto Nov.-18)	1524.71(upto Nov.-18)

NPS Settlement- (Up to Nov-2018)

Unit wise Position

Unit	No of Cases	No of Cases received from Personnel Branch	No of cases settled by Accounts	Balance
HQ	3	3	3	0
JBP	69	96	96	0
BPL	63	63	63	0
KTT	55	55	55	0
BPL(W&S)	3	3	3	0
KTT(W&S)	7	7	7	0
Total	200	200	200	0