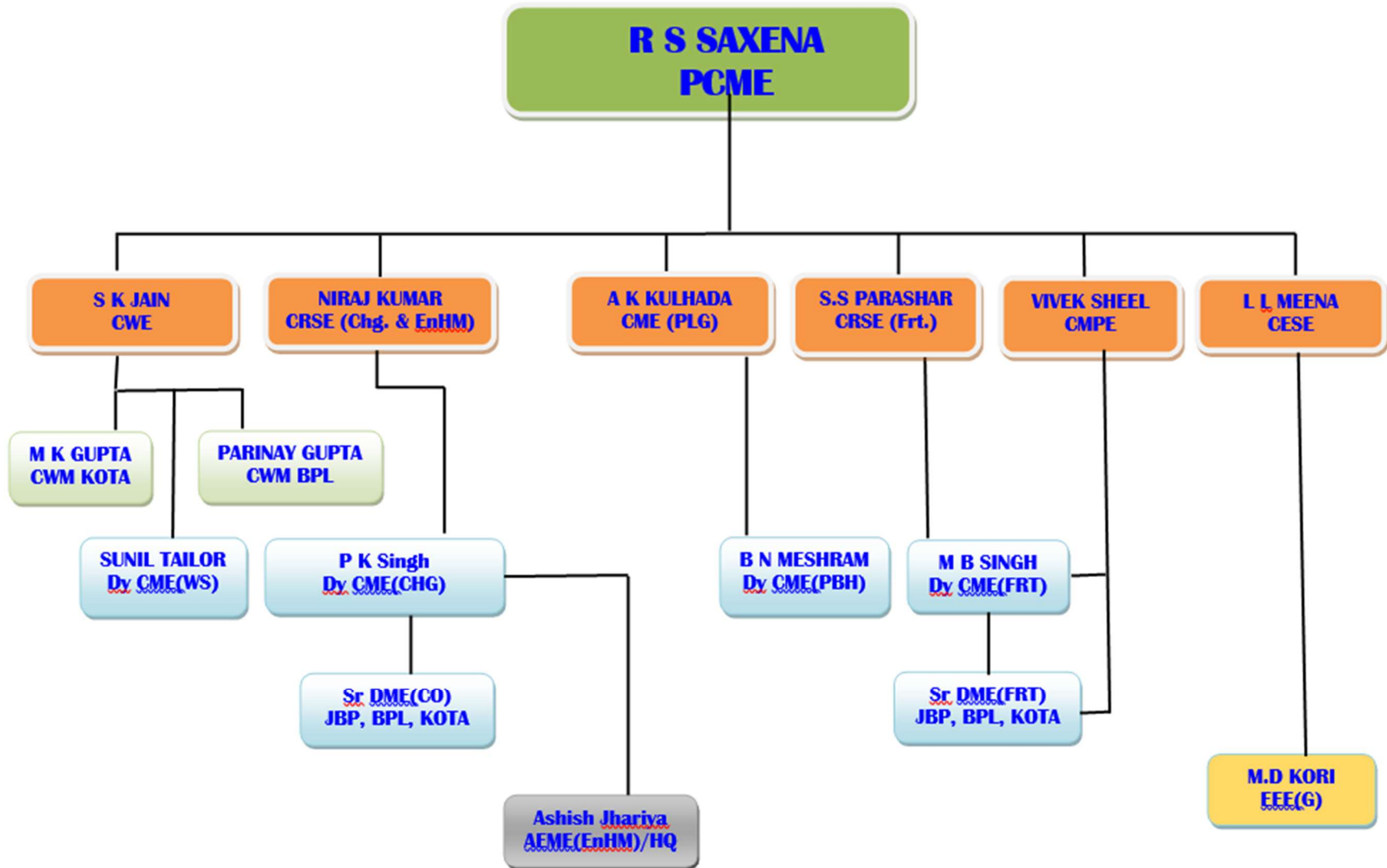


## **About Us**

Mechanical Department is responsible for maintenance of rolling stock including passenger coaches, freight wagons, and cranes. Besides, it maintains large number of machinery & plant in workshops, sheds and other work centers. The department also formulates plans for procurement of rolling stock, machinery & plant and ensures safety and reliability of stock in train operation.

Mechanical department of West Central Railway has fairly heavy responsibility in respect of maintenance of Rolling Stock including, Freight Examination, ROH of BOXN/BCN wagons and primary maintenance of coaches. Coach Rehabilitation Workshop at Bhopal primarily undertakes POH of coaches. Wagon Repair Workshop at Kota primarily undertakes POH and Rehabilitation of BOXN wagons.



As on 10.06.2022

**Duty List of Mechanical Officers at Head Quarter**

<b>S.N.</b>	<b>Name</b>	<b>Post</b>	<b>Brief Description of Duty</b>
1	<b>R.S. Saxena</b>	PCME	Principal Chief of the Mechanical Department. Disposal of all Administrative & Policy Matters of the Deptt.
2	<b>Sanjay Kumar Jain</b>	CWE	Chief of the Mechanical Workshops Bhopal and Kota. Disposal of Administrative & Policy Matters of the Workshops along with technical guidance, planning and managerial works. Co-ordination with other departments & firms.
3	<b>Vivek Sheel</b>	CMPE	Disposal of all Administrative, Policy Matters & guidance of the Diesel sheds (Itarsi and New Katni) along with DTCs and Crew management. Co-ordination with other departments and firms.
4	<b>Niraj Kumar</b>	CRSE(Coaching & EnHM)	Disposal of all Administrative, Policy Matters & guidance of the Coaching and EnHM. Co-ordination with other departments and firms.
5	<b>S.S Parashar</b>	CRSE (freight)	Disposal of all Administrative, Policy Matters & guidance of the Wagon matters and Way side Equipments. Co-ordination with other departments and firms.
6	<b>Ashish Kulhada</b>	CME(PIg)	Disposal of all Administrative, Policy Matters & guidance of the Planning of Works(PH-42), M&P(PH-41) of Mechanical Department and all Department of WCR for PH-41. Budget of Mechanical Department. All matter of Heritage. Co-ordination with other departments and firms.
7	<b>P.K Singh</b>	Dy.CME (Coaching)	All works related to Carriage. Co-ordination with the division regarding repair and maintenance of Carriage. Reply of Audit para related to carriage. All matters related to Environment & Housekeeping Management.
8	<b>Mani Bhushan Singh</b>	Dy.CME (Freight)	All works/matter related to Wagon, in-motion Weighbridges and WILD at head quarter level. Management of Carriage and Wagon control at head quarter level. Co-ordination with the division regarding repair and maintenance of Wagon, in-motion Weighbridges and WILD . Daily monitoring of RTI cases, Reply of Audit Para related to freight..
9	<b>B.N.Meshram</b>	Dy.CME (P&B+H)	All matters pertaining to planning, Budget involving revenue budget & budget of demand No. 6- PH21, PH-41 and PH-42. All matter of Heritage. IRCMS, Public grievance portal, audit cases at HQ level.
10	<b>Sunil Tailor</b>	Dy.CME /Workshop	All matters related to Workshops (WRS/Kota and CRWS/BPL). Court cases and arbitration, Co-ordination with Store department for tender cases and timely supply of material to Workshops.
11	<b>Ashish Jhariya</b>	AEME /(EnHM)/HQ	Will look after all matters related to Environment and Housekeeping at HQ level.